

# ROCKHAMPTON

4 Bedroom / 174.8 m<sup>2</sup>

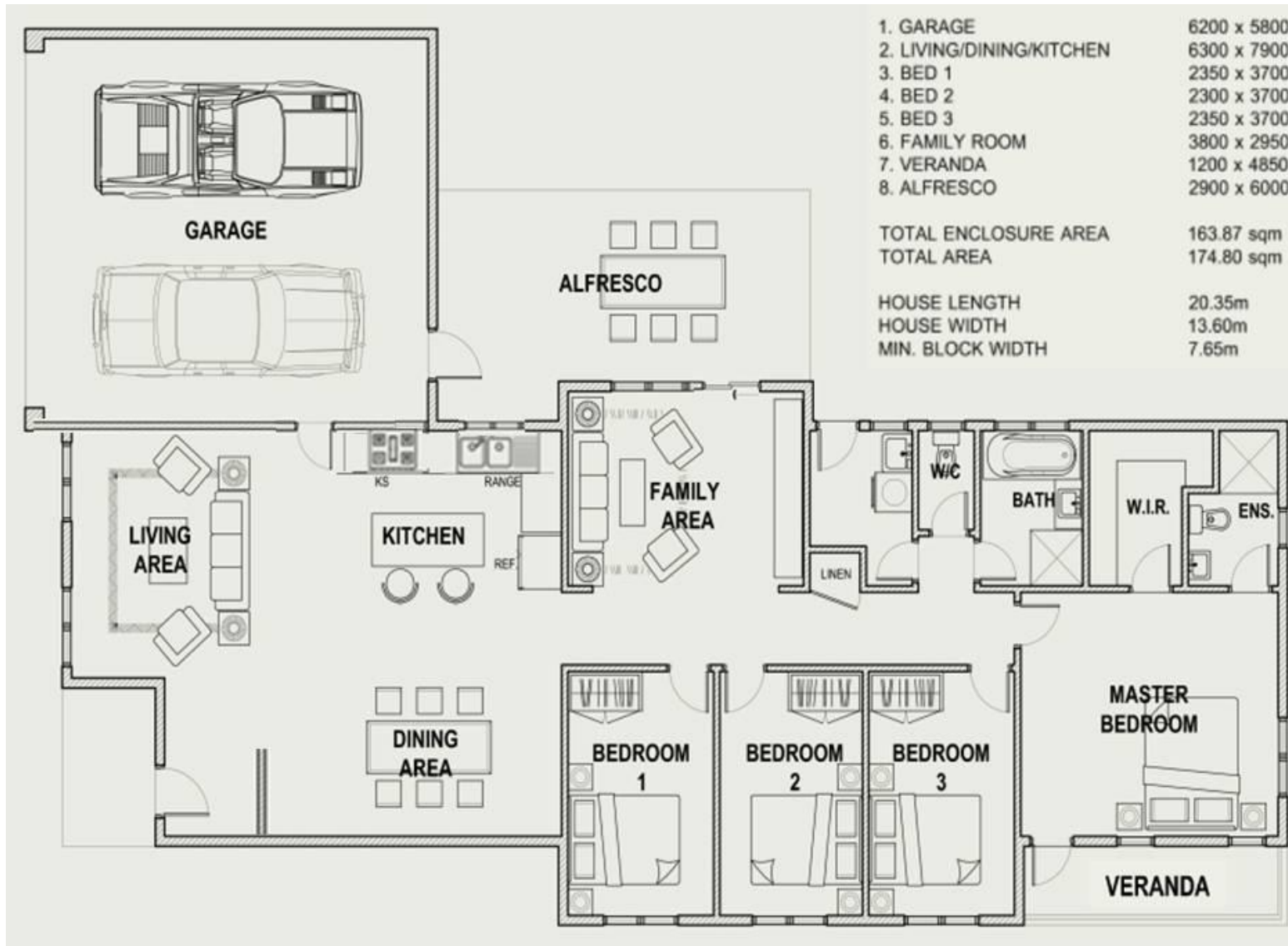
**BUILD**<sup>™</sup>  
*Homes*



HOUSE DESIGN-ROCKHAMPTON

# ROCKHAMPTON

4 Bedroom / 174.8 m<sup>2</sup>



1. GARAGE	6200 x 5800
2. LIVING/DINING/KITCHEN	6300 x 7900
3. BED 1	2350 x 3700
4. BED 2	2300 x 3700
5. BED 3	2350 x 3700
6. FAMILY ROOM	3800 x 2950
7. VERANDA	1200 x 4850
8. ALFRESCO	2900 x 6000

TOTAL ENCLOSURE AREA	163.87 sqm
TOTAL AREA	174.80 sqm

HOUSE LENGTH	20.35m
HOUSE WIDTH	13.60m
MIN. BLOCK WIDTH	7.65m

LIVING AREA	151.580 Sq. m
VERANDAH	23.220 Sq. m
TOTAL AREA	174.800 Sq. m
	18.815 Sq.

# Thank you for your Attention !



<http://i-build.com.au/>



<http://facebook.com/ibuildau/>



<http://pinterest.com/ibuildbuildings/>



<http://youtube.com/user/ibuildbuilding>



<http://plus.google.com/+I-buildAu/>