



STRONGER



SMARTER



CHEAPER



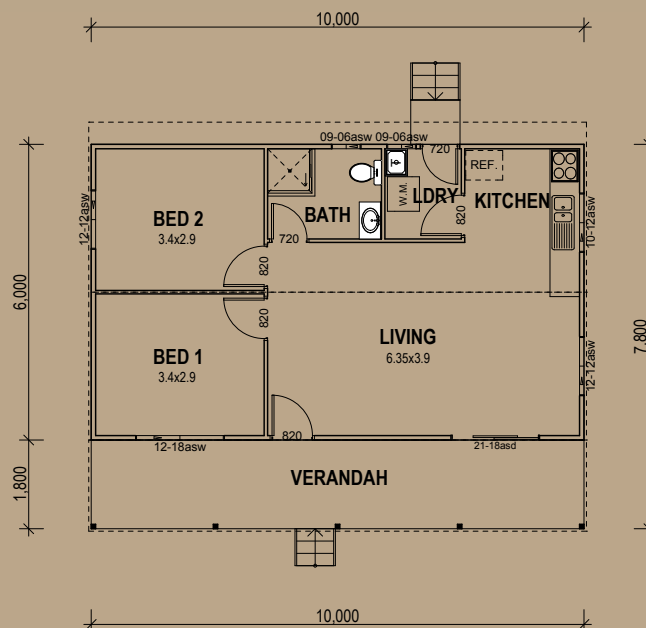
AVILA

2 Bedrooms / 78.00m²

Living Area	60.00m ²
Verandah Area	18.00m ²
Total Area	78.00m ²

With a full verandah across the front, the Avila is always a winner for folks looking at homes of this size.

Floor Plan



5A Hartnett Close, Mulgrave, VIC
 PO Box 2516, Mt Waverley, VIC 3149
 1800 679 268

Web: i-build.com.au

email: info@i-build.com.au