



STRONGER



SMARTER



CHEAPER



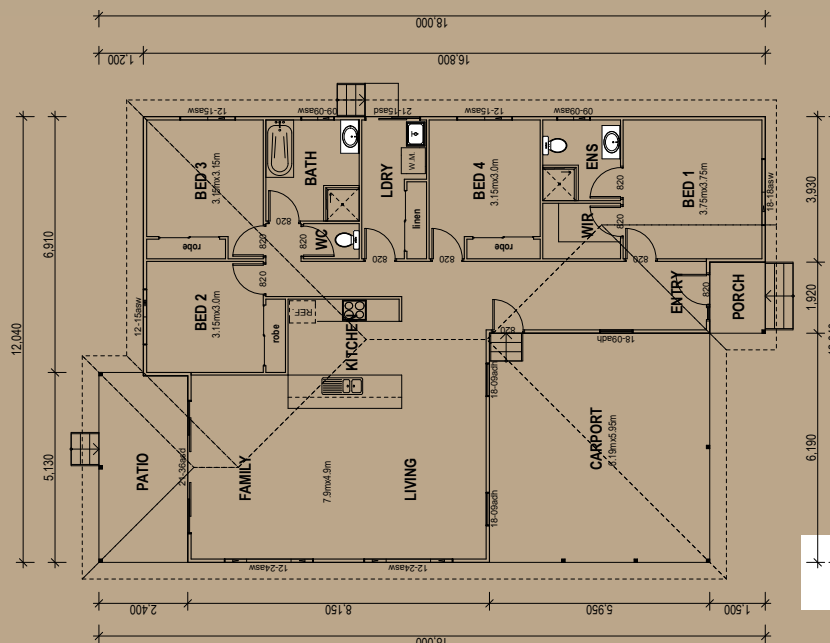
## DARWIN

4 Bedrooms / 198.96m<sup>2</sup>

Living Area	147.23m <sup>2</sup>
Verandah Area	14.90m <sup>2</sup>
Total Area	198.96m <sup>2</sup>

This attractive family home with a patio at the back lends itself to easy family living. The internal access from the carport will keep you dry on the wettest days as you return home. With four large bedrooms and a master ensuite, this modern design offers you both comfort and elegance.

### Floor Plan



5A Hartnett Close, Mulgrave, VIC  
 PO Box 2516, Mt Waverley, VIC 3149  
 1800 679 268

Web: [i-build.com.au](http://i-build.com.au) email: [info@i-build.com.au](mailto:info@i-build.com.au)