



STRONGER



SMARTER



CHEAPER



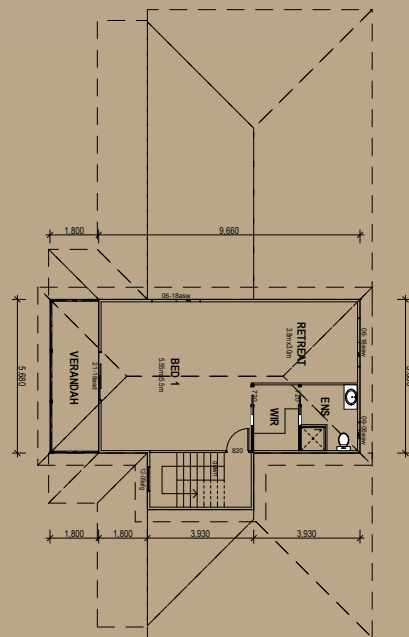
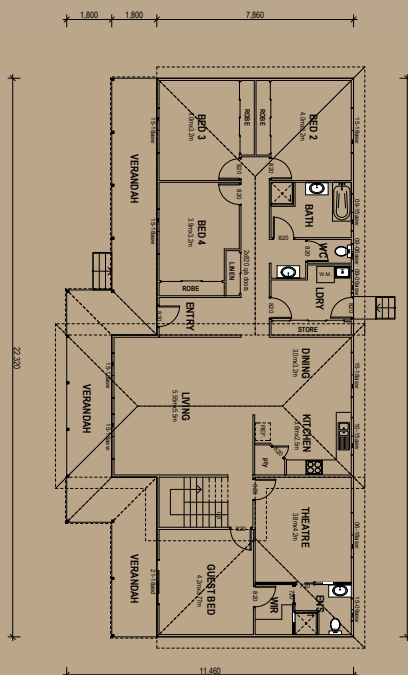
## GOLD COAST

5 Bedrooms / 294.40m<sup>2</sup>

Living Area	219.30m <sup>2</sup>
Verandah Area	75.10m <sup>2</sup>
Total Area	294.40m <sup>2</sup>

This two storey design features four family bedrooms, a guest room, a theatre and a parent retreat! A luxury home ideal for the larger or extended family.

### Floor Plan



5A Hartnett Close, Mulgrave, VIC  
 PO Box 2516, Mt Waverley, VIC 3149  
 1800 679 268

Web: [i-build.com.au](http://i-build.com.au) email: [info@i-build.com.au](mailto:info@i-build.com.au)