



STRONGER



SMARTER



CHEAPER



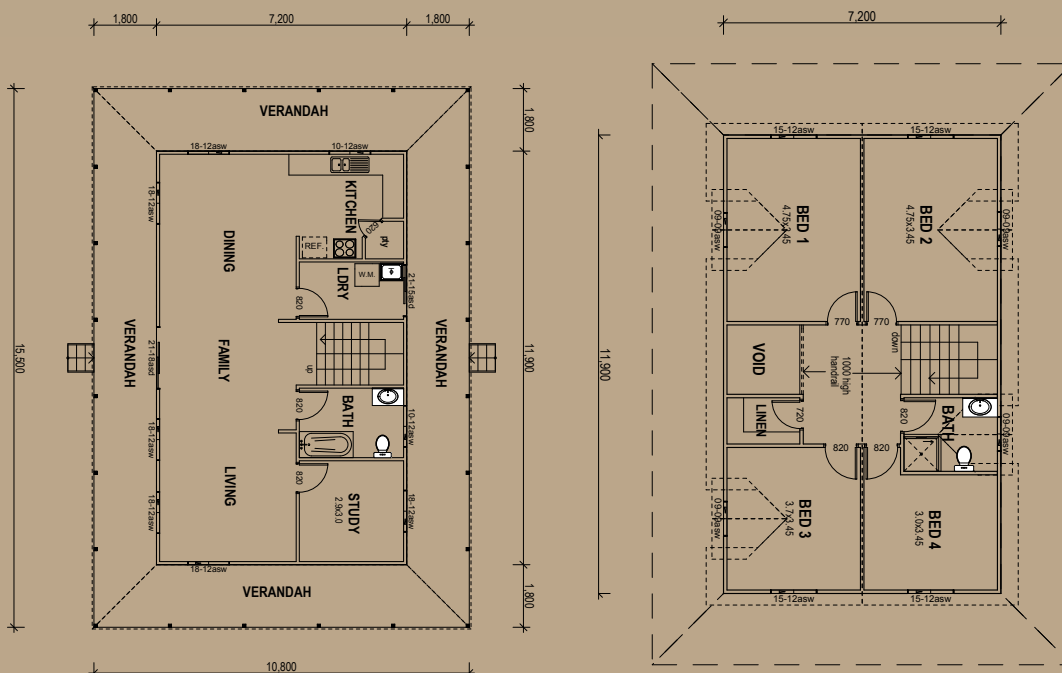
GRANDVIEW

4 Bedrooms + Study / 253.08m²

Living Area	171.36m ²
Verandah Area	81.72m ²
Total Area	253.08m ²

Stunning! This large, two storey home is elegant and aesthetically pleasing. With four large bedrooms and walk in linen closet, this is a truly fabulous family home.

Floor Plan



5A Hartnett Close, Mulgrave, VIC
 PO Box 2516, Mt Waverley, VIC 3149
 1800 679 268

Web: i-build.com.au email: info@i-build.com.au