



STRONGER



SMARTER



CHEAPER



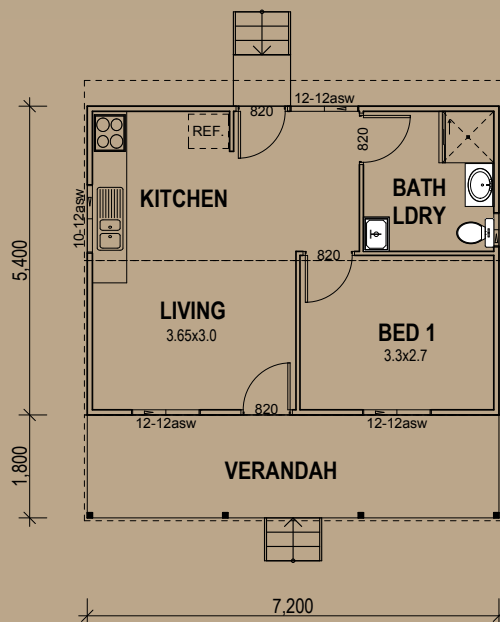
## OXFORD

1 Bedrooms / 51.84m<sup>2</sup>

Living Area	38.88m <sup>2</sup>
Verandah Area	12.96m <sup>2</sup>
Total Area	51.84m <sup>2</sup>

The compact Oxford is ideal for that additional dwelling on your property. Perfect for independent living or as a cabin for holiday parks, while still being near enough to socialise.

### Floor Plan



5A Hartnett Close, Mulgrave, VIC  
 PO Box 2516, Mt Waverley, VIC 3149  
 1800 679 268

Web: [i-build.com.au](http://i-build.com.au)

email: [info@i-build.com.au](mailto:info@i-build.com.au)