

# IBUILD T111S

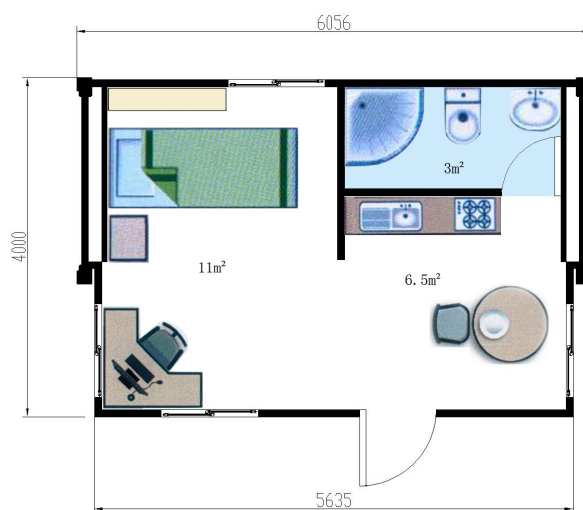
1 BEDROOM, 1 ENSUITE, 1 KITCHEN, 25M<sup>2</sup>



**iBuild Homes are exceptionally stylish, smart, flexible, and attractive houses that are designed to sustain outstanding living conditions in almost any locations.**

## General Specifications

- Fully compliant with the Building Codes Australia (BCA)
  - D2 cyclone rated steel structure; seam welded; steel sheet external wall & roof cladding; and marine paint finish
  - Minimum 5 star energy efficiency rating
  - Approximate weight – 9 tonnes
  - Internal bedroom ceiling height – 2.4m
  - Fully insulated (rock wool) roof and wall
  - Hard wired smoke detectors
  - Laminated MDF to all insulated ceilings
  - Pre-fitted utilities including plumbing, AC outlets, switches, phone/TV/data points and RCD safety switches
  - Split system AC outlets in all areas to run up to 1.5hp
  - Bamboo flooring on termite treated marine grade ply base on a structural steel sub-frame
  - Service terminations are ready to receive external connections
  - Thermal Barrier, double glazed aluminium window system
  - Hard wiring for ceiling fans and/or additional lighting
  - Choice of Colorbond Exterior colours, subject to availability
  - Bathroom fittings include vanity cabinet, overhead cabinet, stainless steel vanity mirror, Vitreous vanity bowl, Vitreous toilet, glass shower screens, and exhaust fan
  - Pre-fitted kitchen includes stone bench top stainless steel sink, mixer tap, and overhead cabinets
- Note specifications are subject to change without notice.



## Optional features

- Air conditioning units
- Hot water units
- Solar heat pumps
- Security mesh windows and insect screens
- Exterior doors security type with insect proof screen and security window incorporated
- Window louvers
- Tinted window treatment
- Stainless steel bathroom floor
- Polycarbonate shower screen

**iBUILD**<sup>TM</sup>  
Modulars

Phone: 1800 679 268

Fax: (03) 8562 2288

Email: [info@i-build.com.au](mailto:info@i-build.com.au)

5A Hartnett Close, Mulgrave, VIC

PO Box 2516, Mt Waverley, VIC 3149

Web: <http://www.i-build.com.au>