



EXPANSION STUDIO

1 BEDROOM, 1 ENSUITE, 1 KITCHEN, 27M²



iBuild Homes are exceptionally stylish, smart, flexible, and attractive houses that are designed to sustain outstanding living conditions in almost any locations.

Standard Inclusions

Interior Fit & Finish

- Plasterboard Walls and Ceilings
- Timber Flooring and Skirting
- Recessed LED Down-Lights
- Cross-Ventilated Living Area's
- 2.4 - 2.6m Ceiling Height
- Full Height Interior Door
- Powerpoints
- TV/Data Points
- Double-Glazed Glass Window
- White gloss polyurethane kitchen
- Stainless Steel Sink
- Modern Chrome Sink Mixer
- White Quartz Stone Benchtop

Exterior Fit & Finish

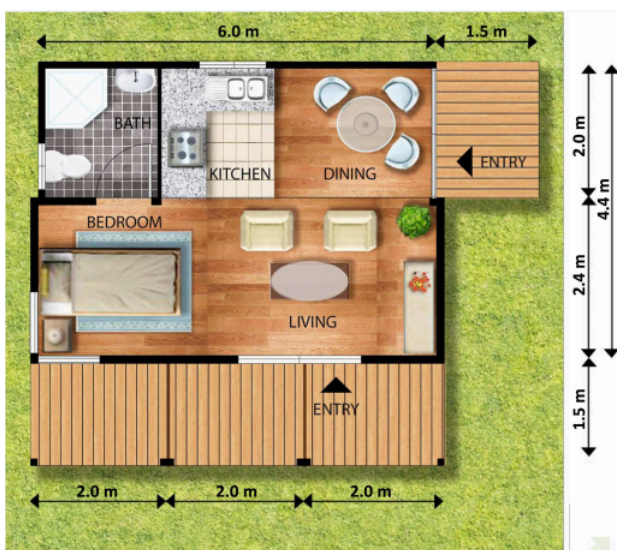
- Fibre Cement & Man-made Timber Cladding Mixed (Standard)
- Double-Glazed Glass Windows
- Ready for connection to Cold Water Services and Drainage
- Ready for connection to Electrical Supply and Water Heating Services

Kitchen Inclusions

- White gloss polyurethane kitchen
- Stainless Steel Sink
- Modern Chrome Sink Mixer
- White Quartz Stone Benchtop
- White Tiled Splashback

Bathroom Inclusions

- White Ceramic Wall Tiles
- Black, Slip Resistant Floor Tiles
- White Ceramic Contemporary Basin
- Modern Toilet and Cistern
- Modern Chrome Basin Mixer
- Wall Mounted Shower Head and Mixer
- Glass Shower Screen
- Stainless Steel Towel Rail
- Stainless Steel Toilet Roll Holder
- Stainless Steel Robe Hook
- Fully Tiled Wet Area's
- Recessed LED Down-Lights



Optional features

- Air conditioning units
- Hot water units
- Solar heat pumps
- Other various Cladding Options available (Optional)
- Flat (Standard) or Pitched Metal Roof (Optional)
- Timber 1.5m x 2m Modular Deck (Optional)



Phone: 1800 679 268

Fax: (03) 8562 2288

Email: info@i-build.com.au

5A Harnett Close, Mulgrave, VIC

PO Box 2516, Mt Waverley, VIC 3149

Web: <http://www.i-build.com.au>