



**BUILD**  
Building Solutions

**BUILD**<sup>TM</sup>  
Building Solutions

STRONGER • SMARTER • FASTER  
**MORE AFFORDABLE**

**KIT HOMES**

# Pakenham

This charming one-bedroom kit home features an open-plan living and kitchen area that leads out onto an open verandah. This home ticks all the boxes for those looking for a well-designed cozy home.

ENCLOSED	OTHER
45.63m <sup>2</sup>	17.5m <sup>2</sup>
<b>TOTAL 63.13m<sup>2</sup></b>	
1	1
	1



59<sup>TH</sup> AUSTRALIAN  
Export & Investment Awards

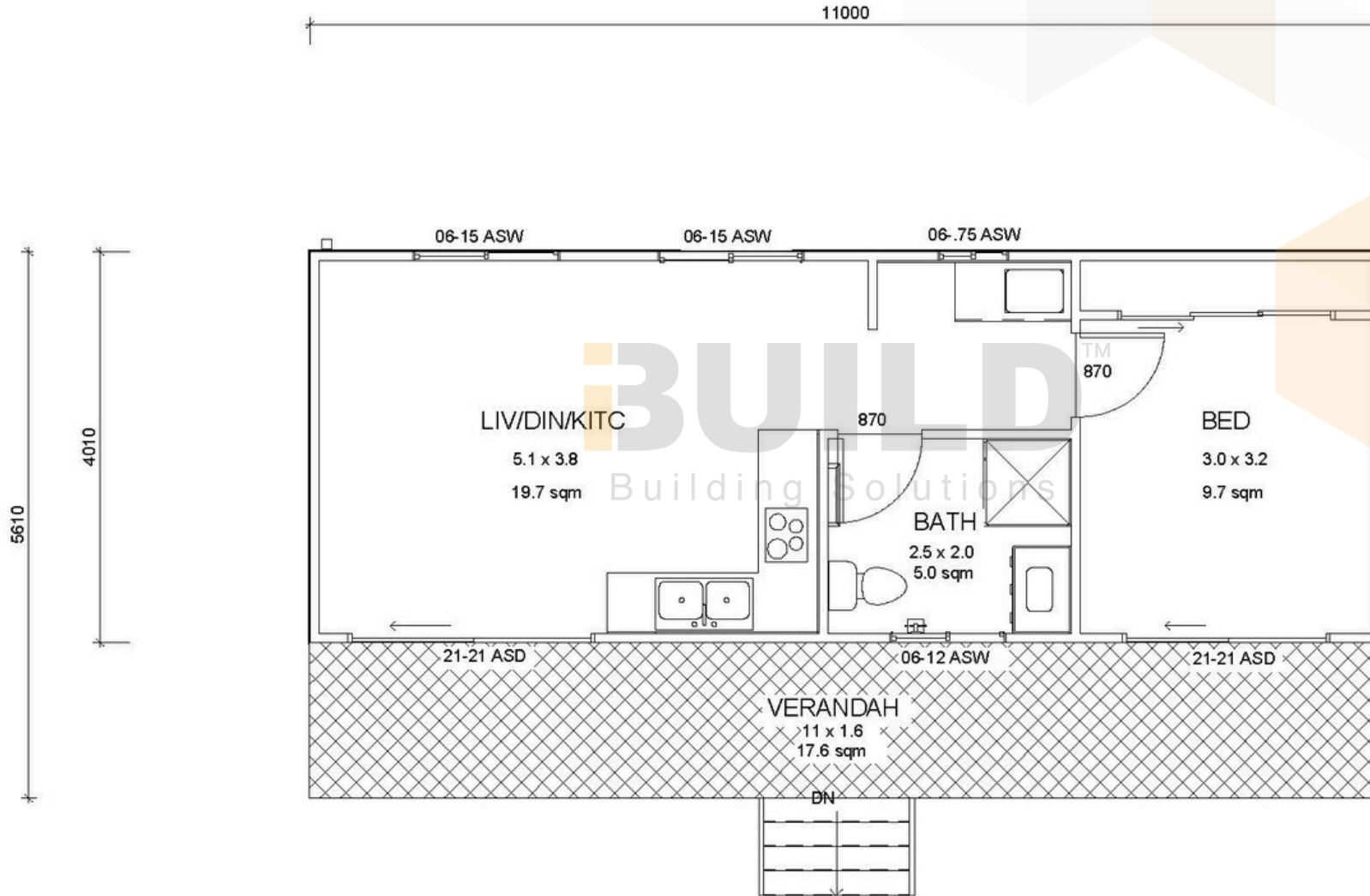
EXPORT  
AWARDS  
2021

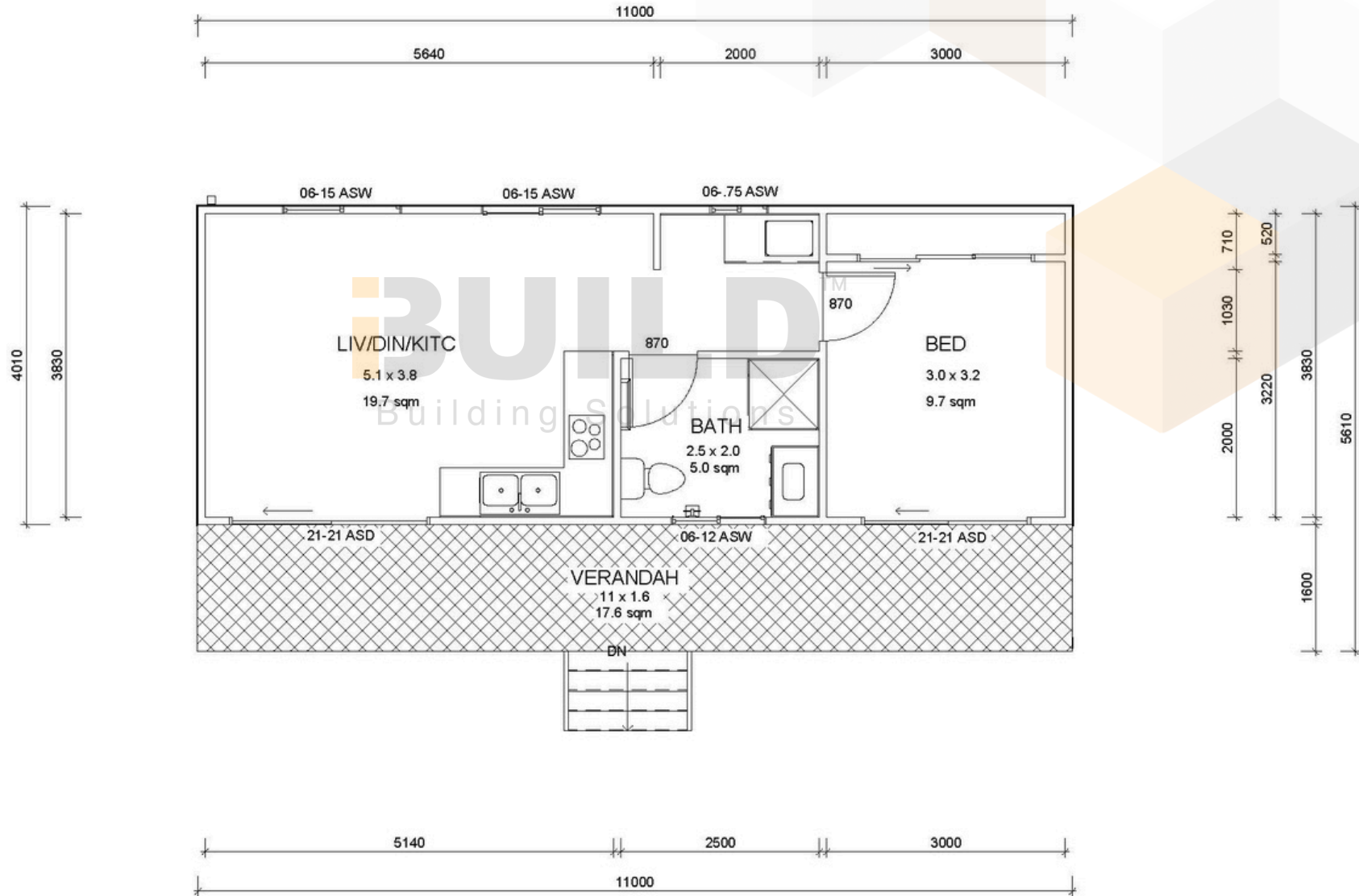
1800 679 268  
info@i-build.com.au  
www.i-build.com.au

Facebook@ibuildau  
YouTube@ibuildbuilding  
Pinterest @ibuildbuildings

Eastern Innovation  
5A Hartnett Close  
Mulgrave VIC 3170

© copyright iBuild - v9.17 20220930









**BUILD**  
Building Solutions

**BUILD**<sup>TM</sup>  
Building Solutions

STRONGER • SMARTER • FASTER  
**MORE AFFORDABLE**

**KIT HOMES**

**OAKDALE**

Boasting a generously sized living room that provides ample space for relaxation and entertainment, as well as a charming outdoor deck that extends the living space to the great outdoors, the Oakdale is the epitome of small and compact living done right. This cozy yet functional addition to your property is designed to make the most of every square inch, offering a perfect blend of comfort and versatility.

ENCLOSED	OTHER
17.22m <sup>2</sup>	3.20m <sup>2</sup>
<b>TOTAL 20.42m<sup>2</sup></b>	
1-	1
	1



59<sup>TH</sup> AUSTRALIAN  
Export & Investment Awards

EXPORT  
AWARDS  
2021

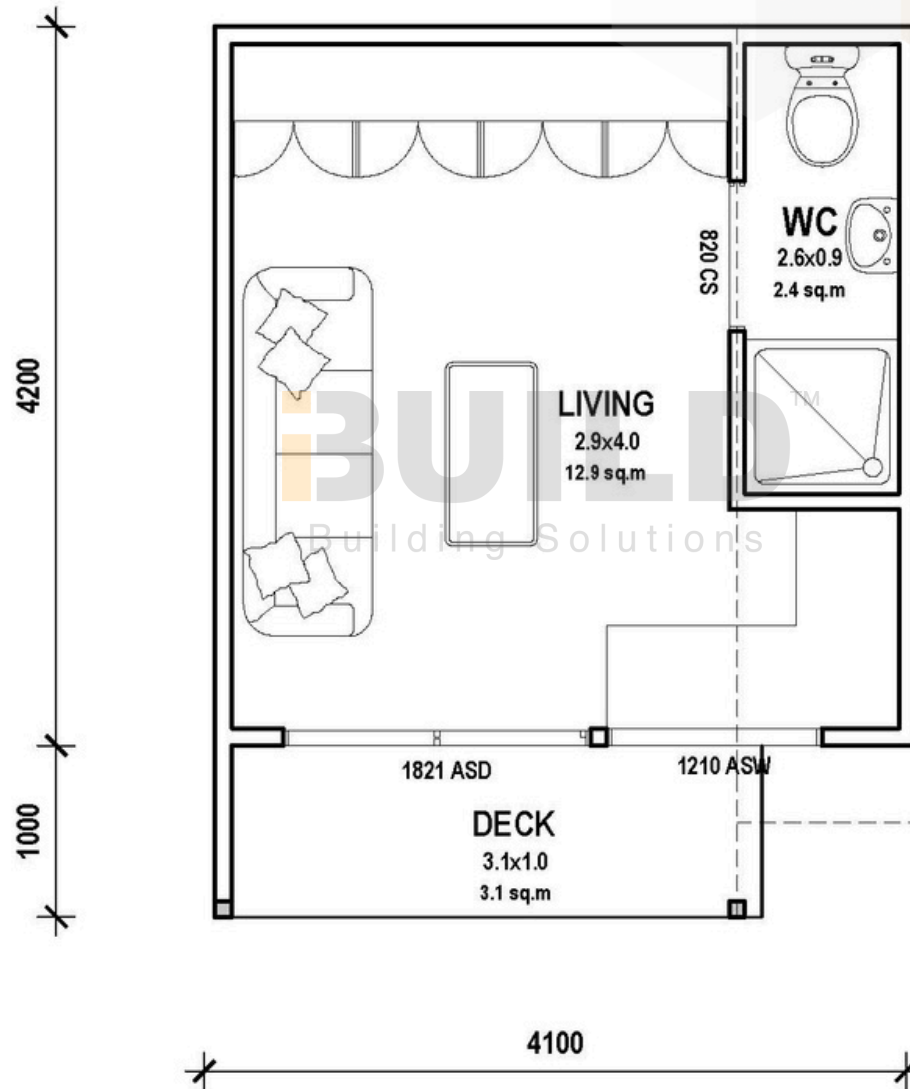
HUME BUSINESS  
AWARDS 2021

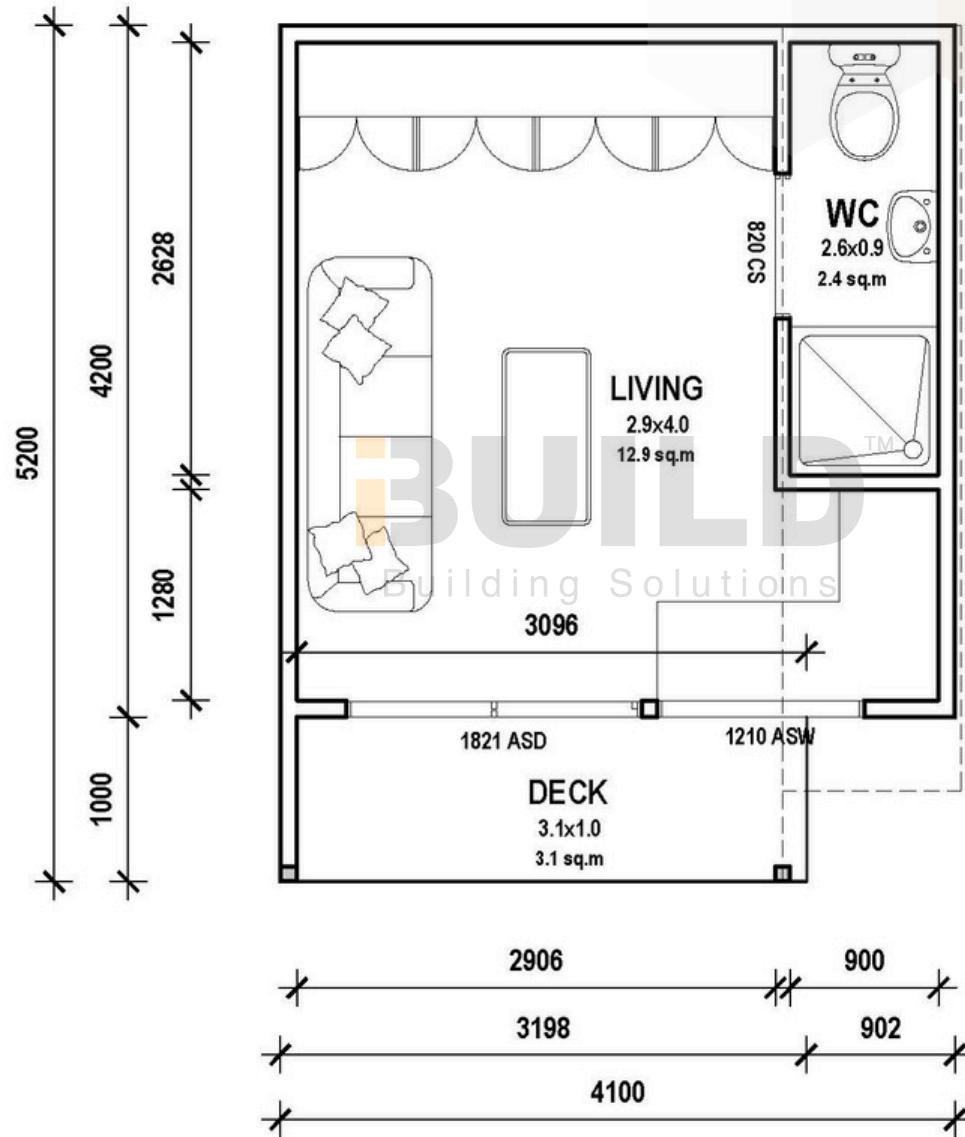
1800 679 268  
info@i-build.com.au  
www.i-build.com.au

Facebook@ibuildau  
YouTube@ibuildbuilding  
Pinterest@ibuildbuildings

Eastern Innovation  
5A Hartnett Close  
Mulgrave VIC 3170

© copyright iBuild - v9.17 20220930







**BUILD**<sup>TM</sup>  
Building Solutions





**iBUILD™**  
Building Solutions

STRONGER • SMARTER • FASTER  
**MORE AFFORDABLE**

## KIT HOMES

# OAKDALE 44

Introducing Kit Homes Oakdale 44, a cozy one-bedroom, one-bathroom retreat perfect for singles or couples. Enjoy open-plan living and dining, a compact yet efficient kitchen, and a serene lifestyle surrounded by nature. Ideal for downsizing or a peaceful getaway.

ENCLOSED  
**20.84m<sup>2</sup>**

OTHER  
**4.5m<sup>2</sup>**

**TOTAL 25.34m<sup>2</sup>**



59<sup>TH</sup> AUSTRALIAN  
Export & Investment Awards

EXPORT  
AWARDS  
2021

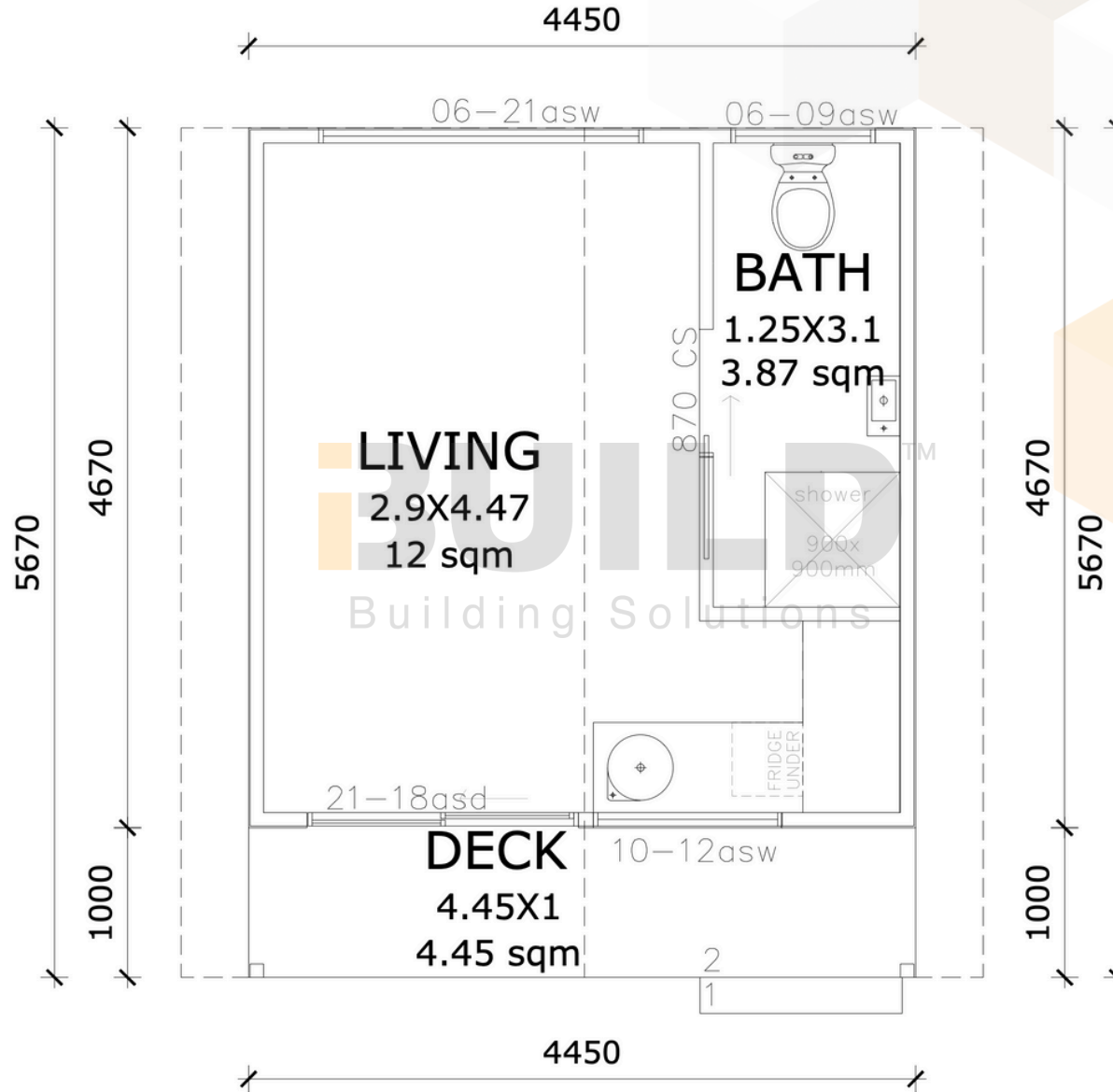
HUME BUSINESS  
AWARDS 2021

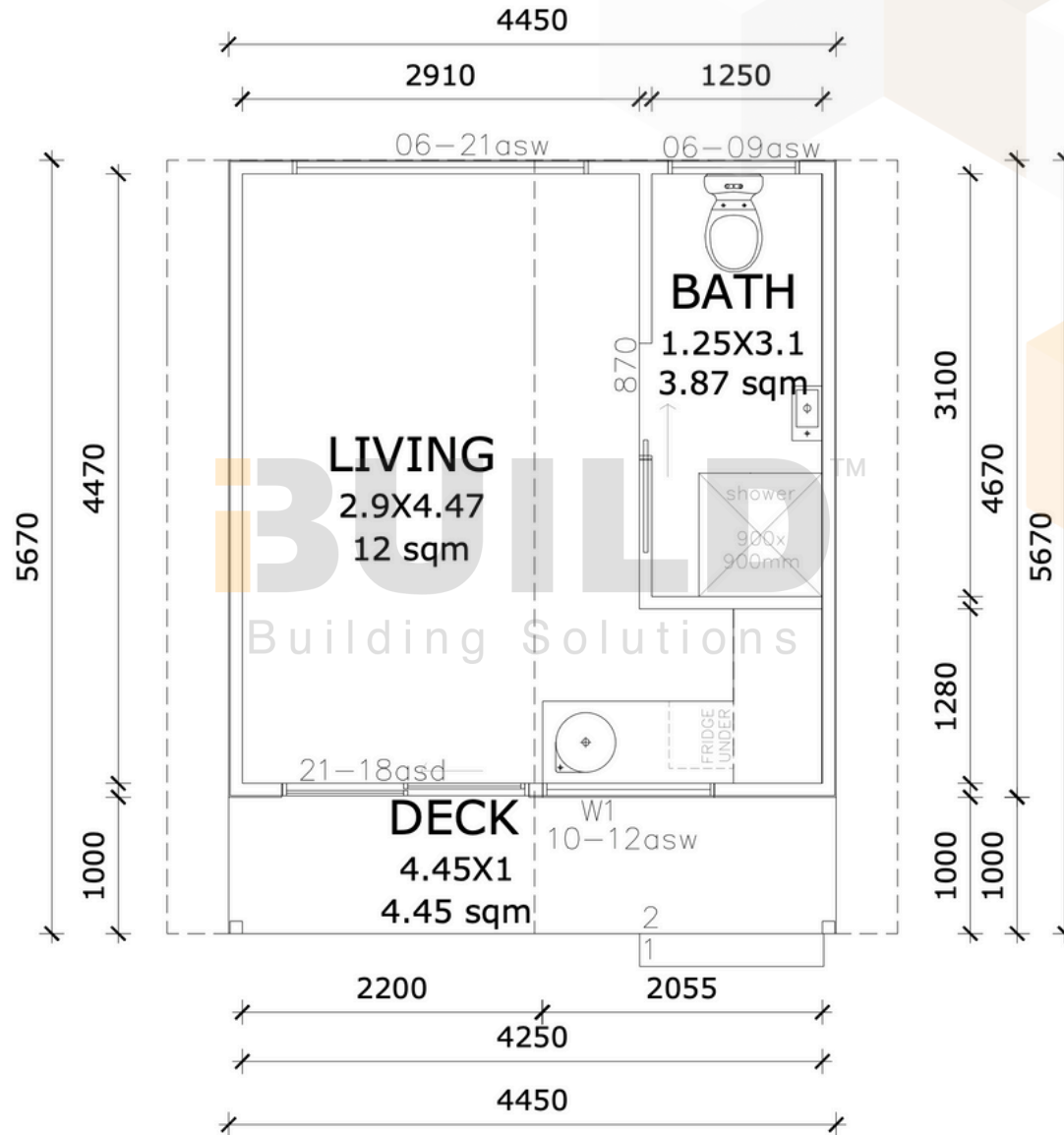
1800 679 268  
info@i-build.com.au  
www.i-build.com.au

Facebook@ibuildau  
YouTube@ibuildbuilding  
Pinterest@ibuildbuildings

Eastern Innovation  
5A Hartnett Close  
Mulgrave VIC 3170

© copyright iBuild - v9.17 20220930









**iBUILD**<sup>TM</sup>  
Building Solutions

**iBUILD**<sup>TM</sup>  
Building Solutions

STRONGER • SMARTER • FASTER  
**MORE AFFORDABLE**

**KIT HOMES**

**MORNINGTON**

Kit Homes Mornington is artfully designed for peaceful, private living. The open living and dining room, featuring several windows, welcomes natural light into the space. The design is completed with a spacious bedroom and bathroom.

ENCLOSED <b>47.1m<sup>2</sup></b>	OTHER <b>7.8m<sup>2</sup></b>
<b>TOTAL 54.9m<sup>2</sup></b>	
1	1
1	



59<sup>TH</sup> AUSTRALIAN  
Export & Investment Awards

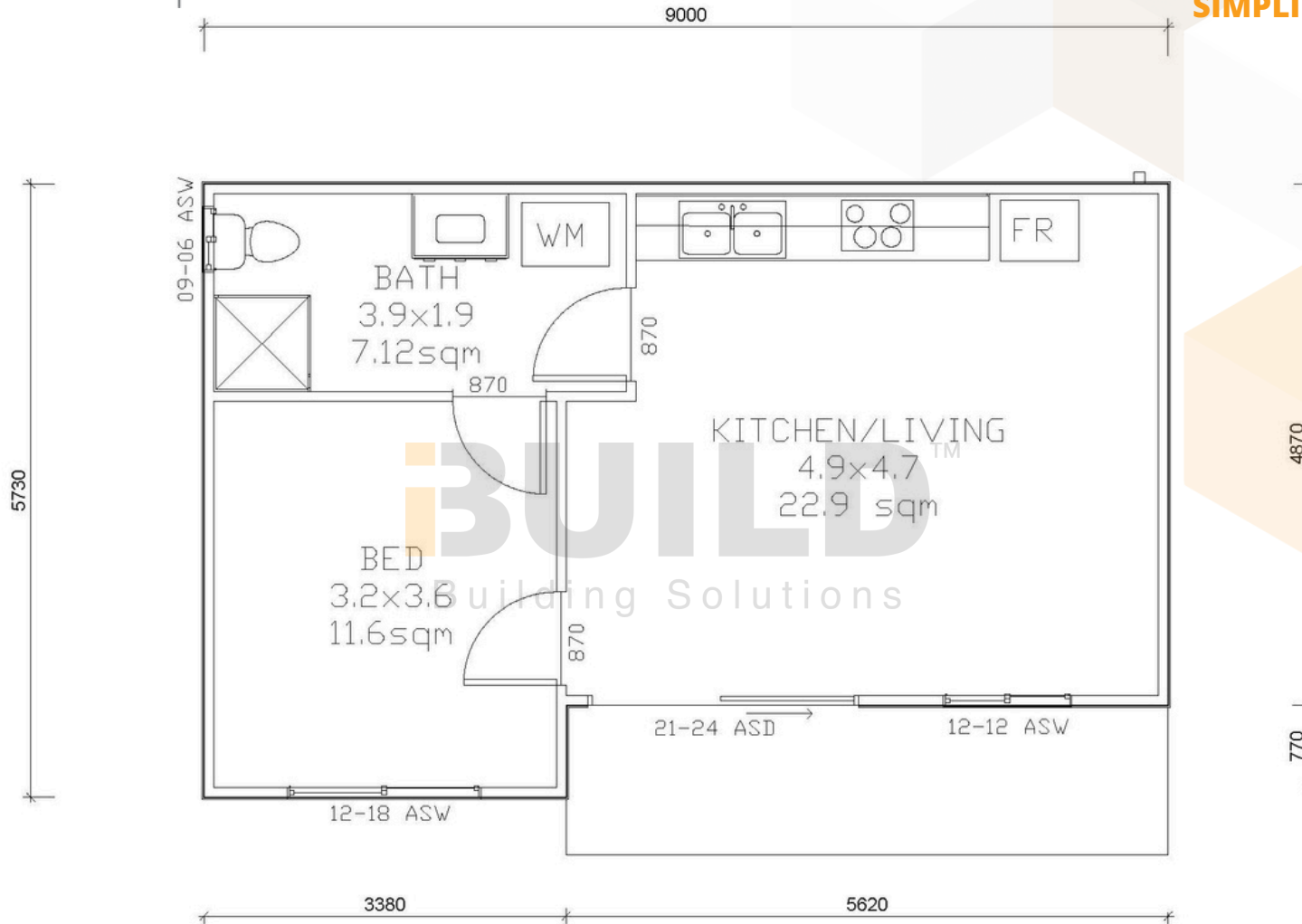
EXPORT AWARDS  
2021

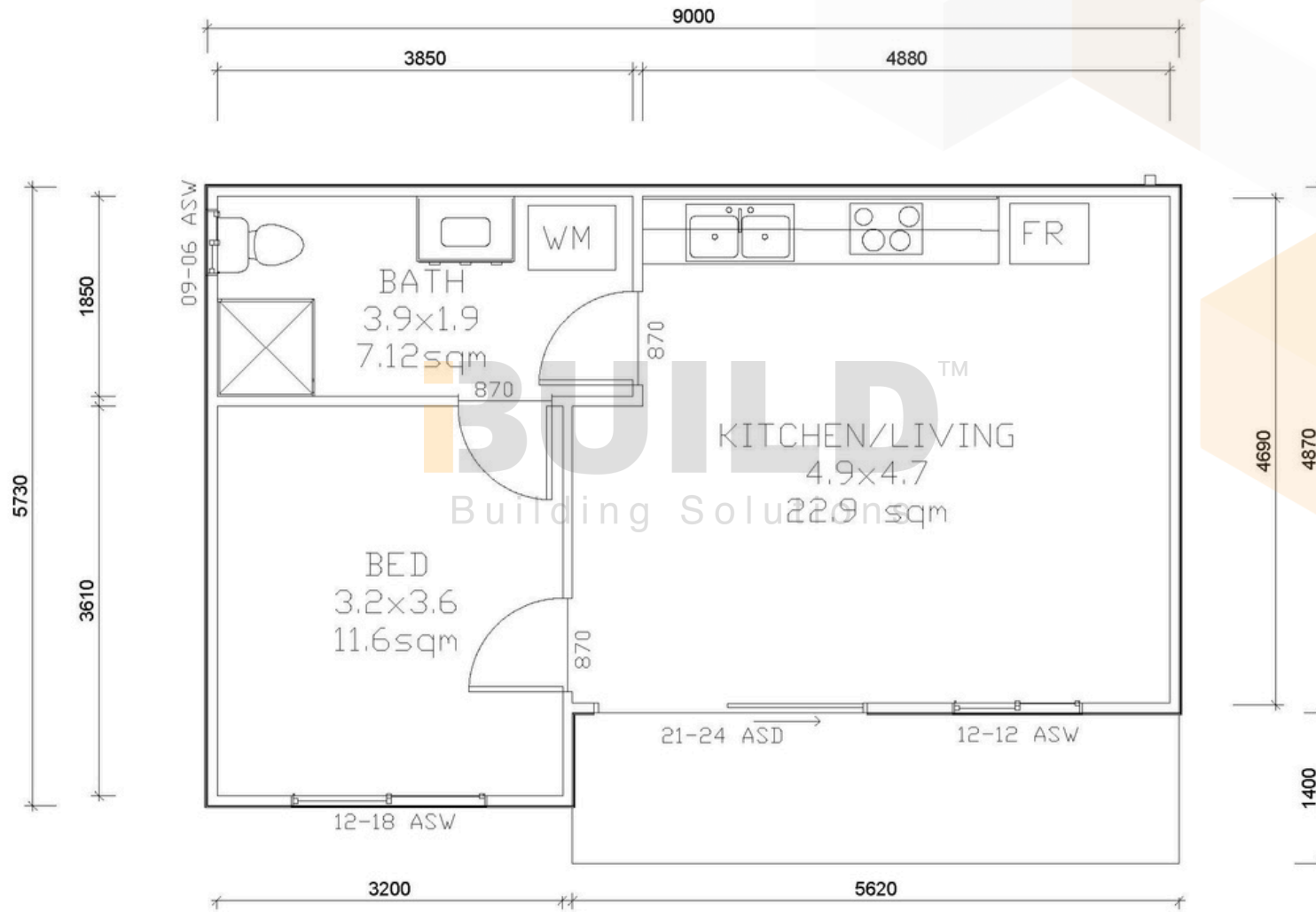
1800 679 268  
info@i-build.com.au  
www.i-build.com.au

Facebook@ibuildau  
YouTube@ibuildbuilding  
Pinterest@ibuildbuildings

Eastern Innovation  
5A Hartnett Close  
Mulgrave VIC 3170

© copyright iBuild - v9.17 20220930







**BUILD**<sup>TM</sup>  
Building Solutions





**iBUILD**  
Building Solutions




**iBUILD**<sup>TM</sup>  
Building Solutions

STRONGER • SMARTER • FASTER  
**MORE AFFORDABLE**

**KIT HOMES**

**BEGA**

Kit Homes Bega offers a charming and compact one-bedroom design, perfect for those seeking simplicity and comfort. This cozy kit home provides a functional and stylish living environment, ideal for a serene retreat.

ENCLOSED	OTHER
35.00m <sup>2</sup>	7.70m <sup>2</sup>
<b>TOTAL 42.70m<sup>2</sup></b>	
 1	 1
	 1



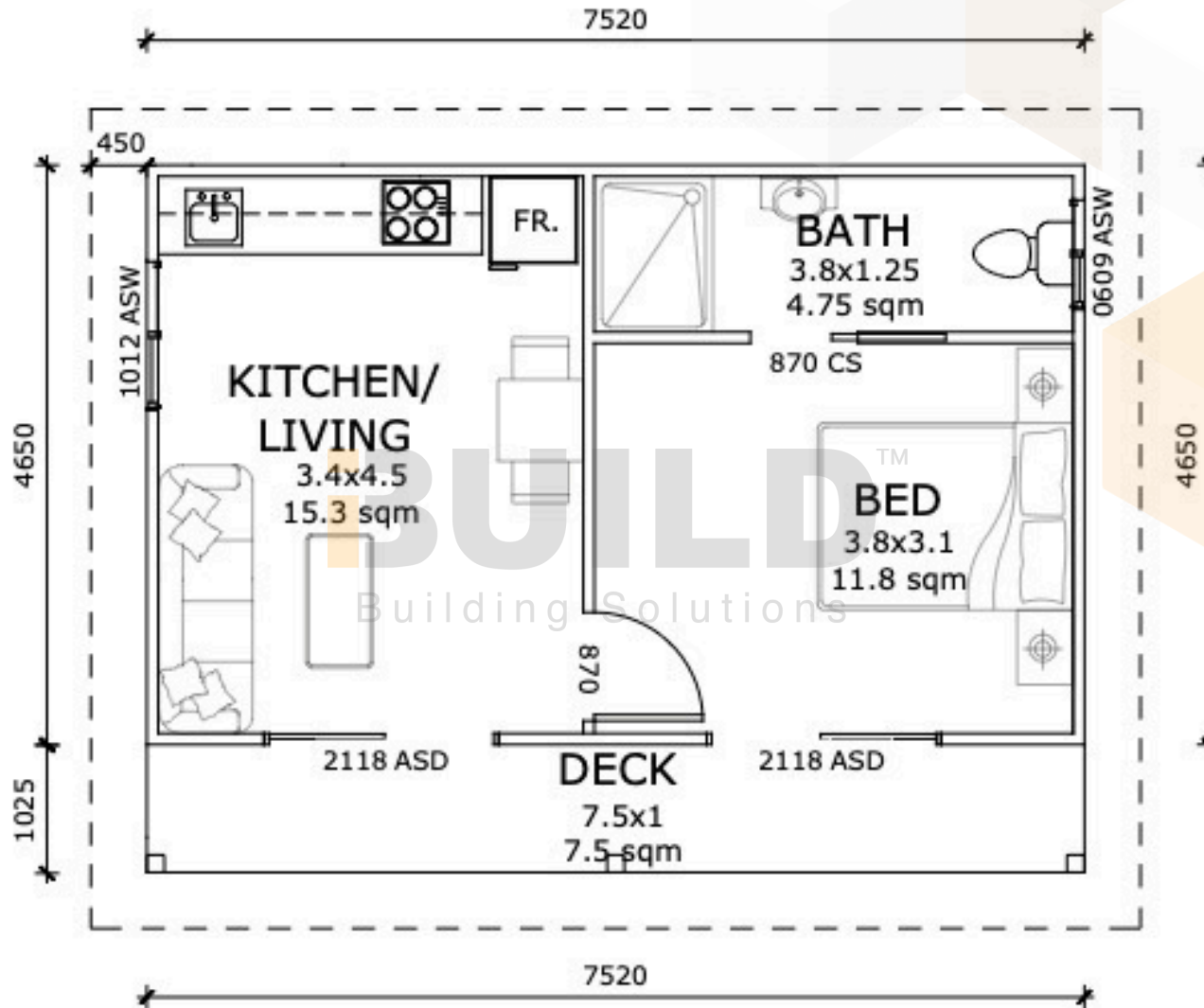
1800 679 268  
info@i-build.com.au  
www.i-build.com.au

Facebook@ibuildau  
YouTube@ibuildbuilding  
Pinterest@ibuildbuildings

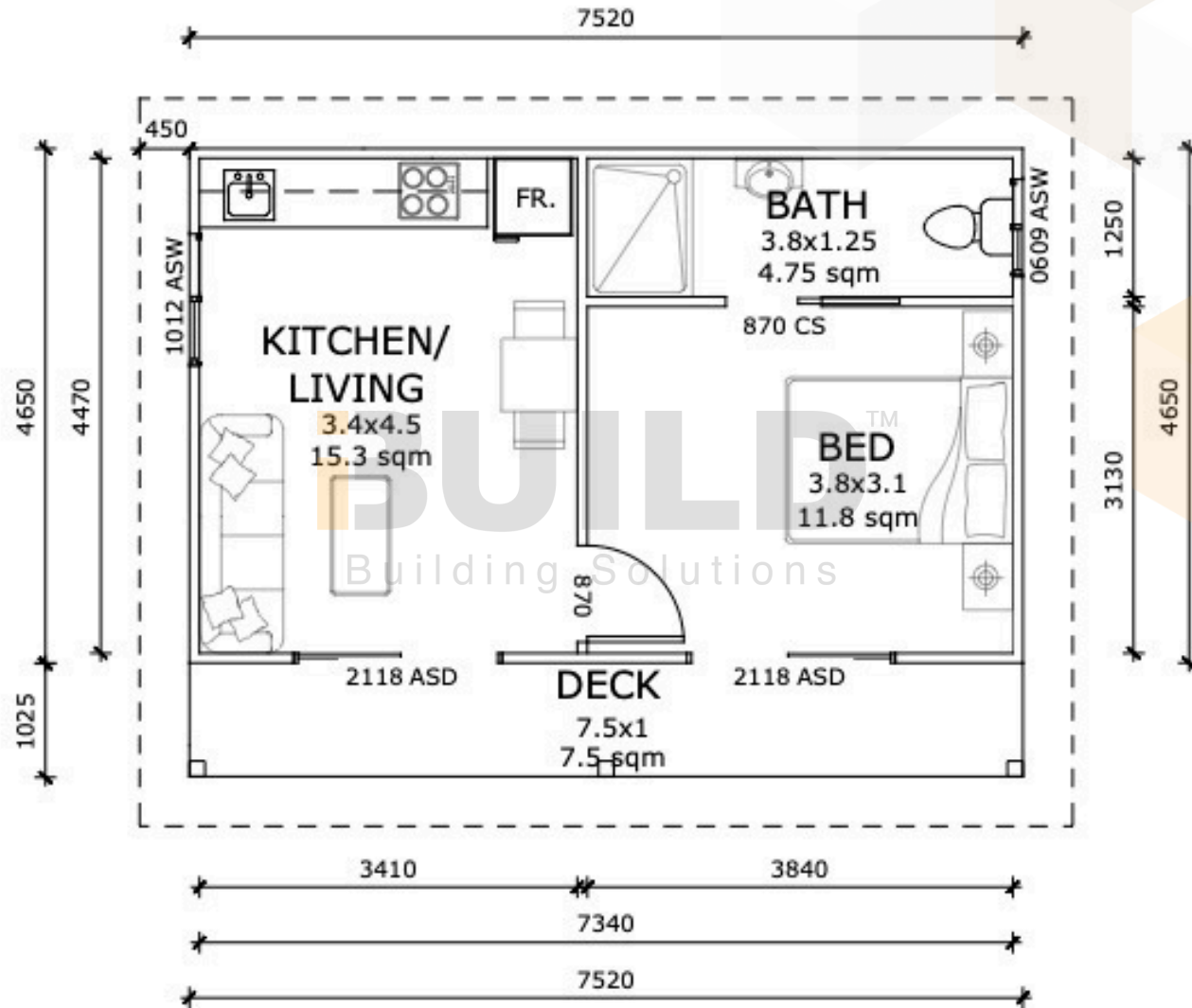
Eastern Innovation  
5A Hartnett Close  
Mulgrave VIC 3170

© copyright iBuild - v9.17 20220930





**GROUND FLOOR PLAN**



**GROUND FLOOR PLAN**



**BUILD**<sup>TM</sup>  
Building Solutions



**iBUILD™**  
Building Solutions

STRONGER • SMARTER • FASTER  
**MORE AFFORDABLE**

**KIT HOMES**

# BALLINA

The Kit Homes Ballina provide a tranquil retreat, ideal for a backyard granny flat or a standalone unit. With its versatile design, it opens up numerous possibilities for personalised living.

ENCLOSED	OTHER
59.86 m <sup>2</sup>	38.50 m <sup>2</sup>
<b>TOTAL 98.36 m<sup>2</sup></b>	
1	1
	1

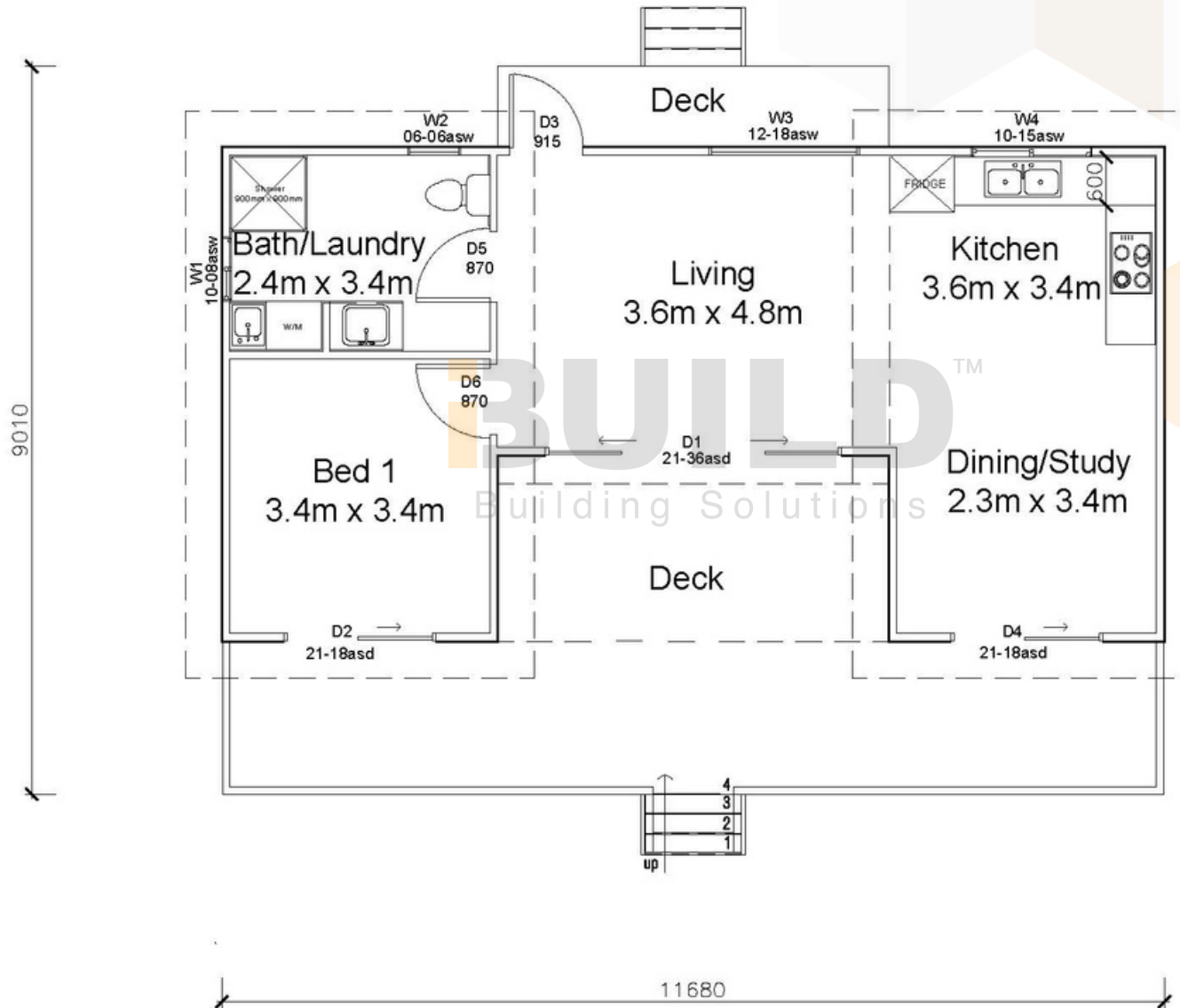


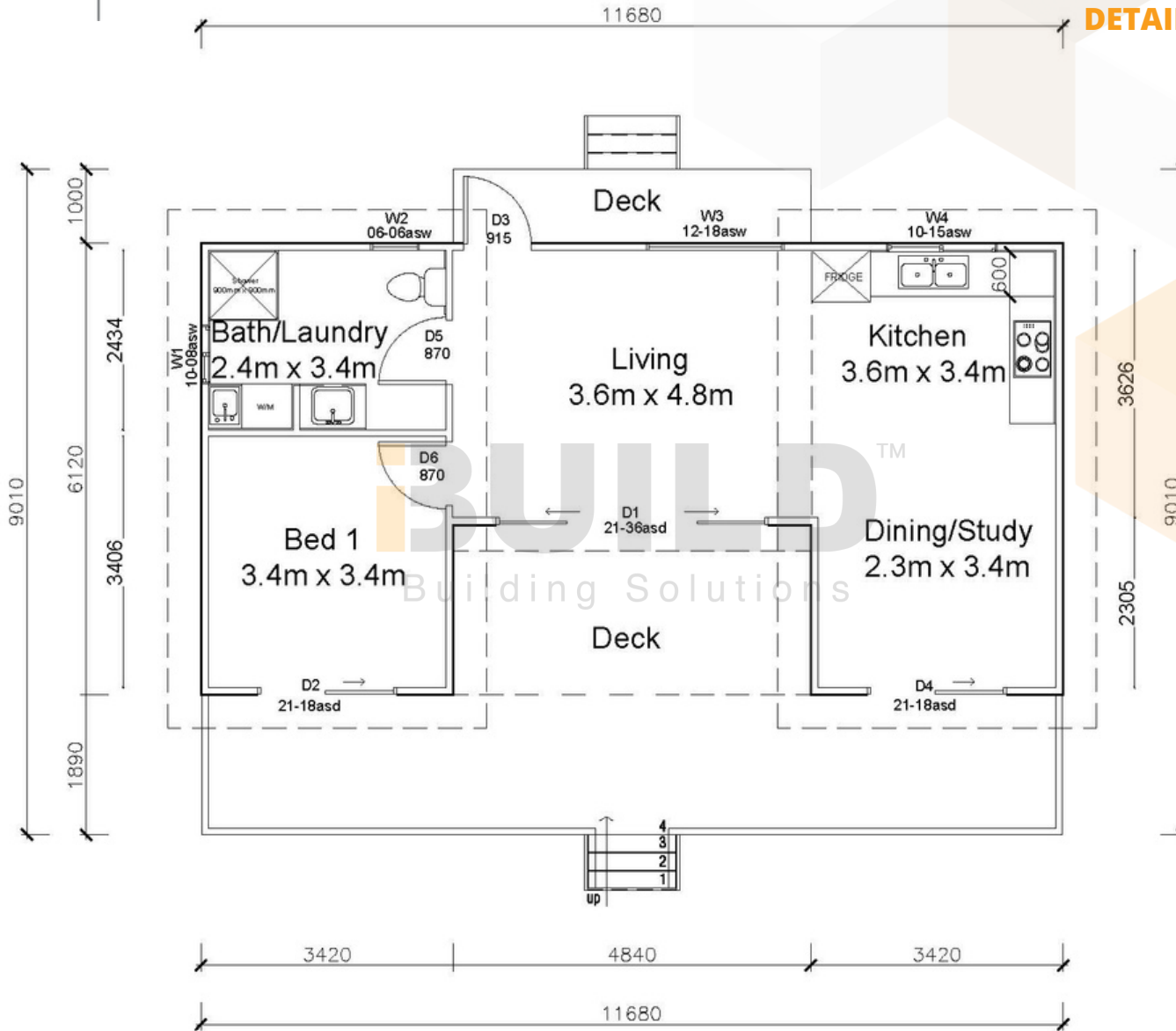
1800 679 268  
info@i-build.com.au  
www.i-build.com.au

[Facebook@ibuildau](#)  
[YouTube@ibuildbuilding](#)  
[Pinterest@ibuildbuildings](#)

Eastern Innovation  
5A Hartnett Close  
Mulgrave VIC 3170

© copyright iBuild - v9.17 20220930











**iBUILD™**  
Building Solutions

STRONGER • SMARTER • FASTER  
**MORE AFFORDABLE**

**iBUILD™**  
Building Solutions

**KIT HOMES**

# OXFORD

The compact Oxford is the ideal home for independent living. This 1 bedroom kit home comes with a cosy living area and an outdoor verandah so you can enjoy the best of both an indoor and outdoor lifestyle.

ENCLOSED	OTHER
38.88m <sup>2</sup>	12.96m <sup>2</sup>
<b>TOTAL 51.84m<sup>2</sup></b>	
1	1
1	



59<sup>TH</sup> AUSTRALIAN  
Export & Investment Awards

EXPORT AWARDS  
2021

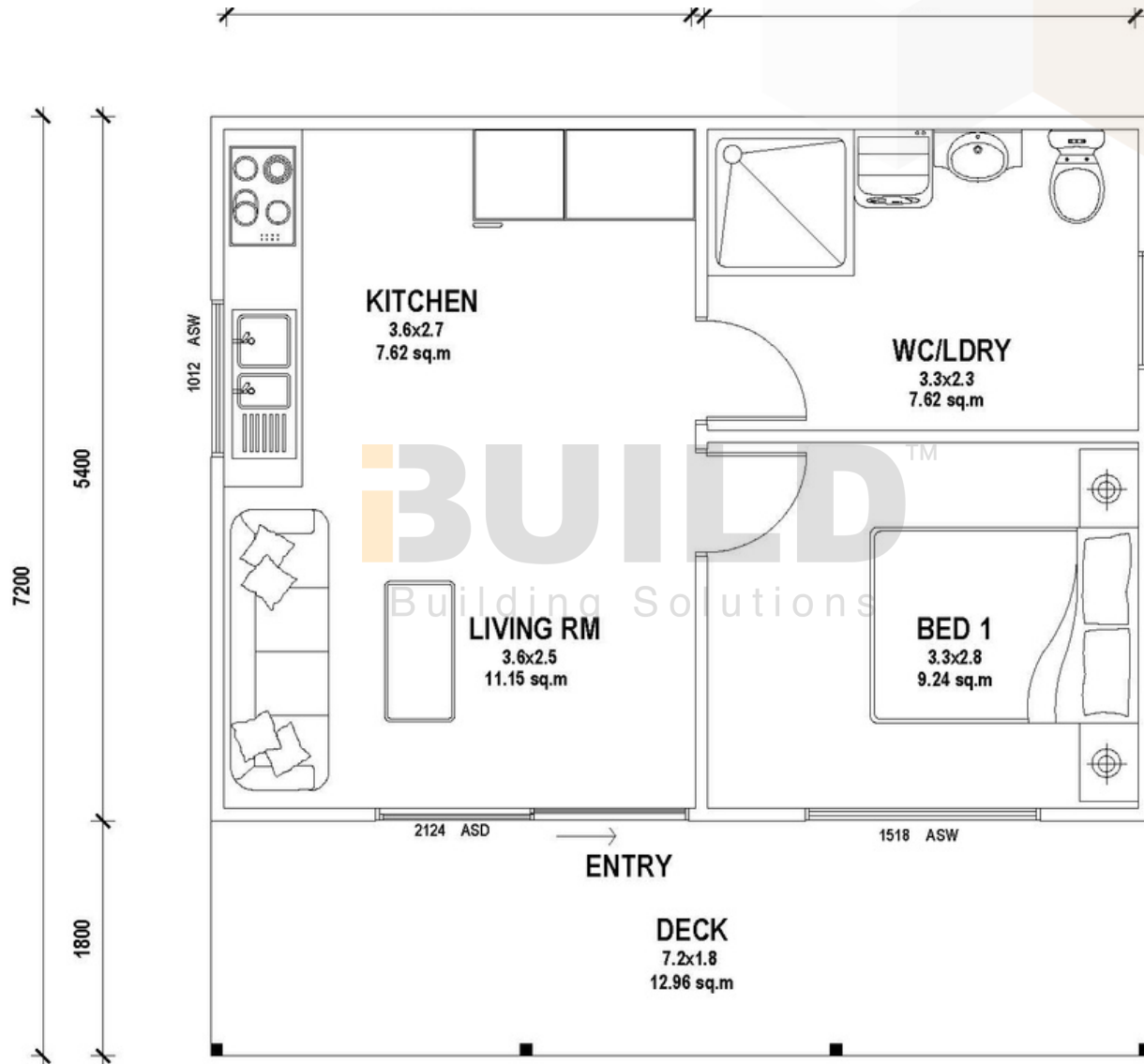
1800 679 268  
info@i-build.com.au  
www.i-build.com.au

Facebook@ibuildau  
YouTube@ibuildbuilding  
Pinterest@ibuildbuildings

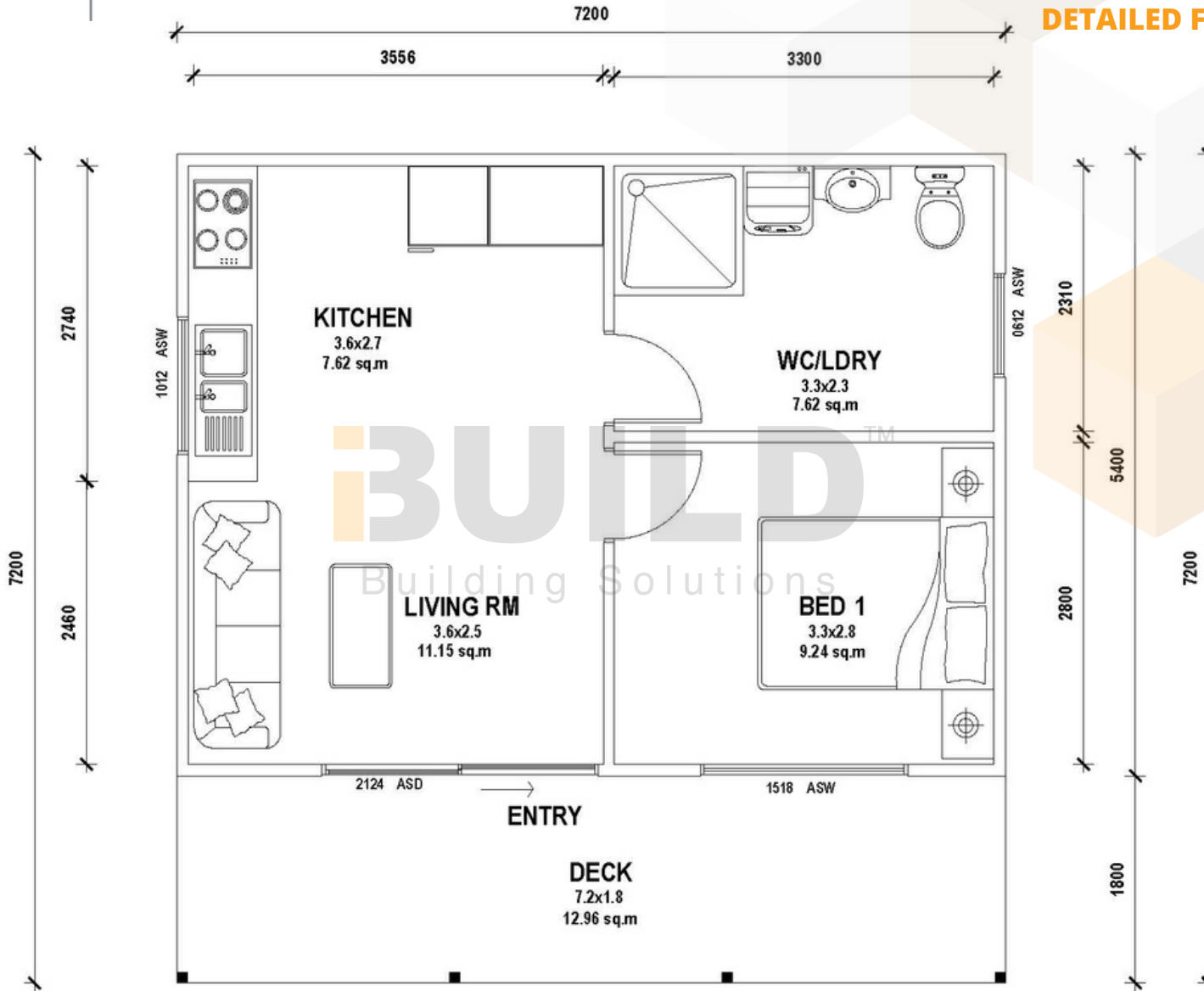
Eastern Innovation  
5A Hartnett Close  
Mulgrave VIC 3170

© copyright iBuild - v9.17 20220930

**iBUILD™**  
Building Solutions



**iBUILD**<sup>TM</sup>  
Building Solutions





**iBUILD**<sup>TM</sup>  
Building Solutions

**iBUILD**<sup>TM</sup>  
Building Solutions



**iBUILD**<sup>TM</sup>  
Building Solutions

**iBUILD**<sup>TM</sup>  
Building Solutions

STRONGER • SMARTER • FASTER  
**MORE AFFORDABLE**

**KIT HOMES**  
**YASS**

Kit Homes Yass is a stylish and modern studio kit home design that provides a comfortable and affordable living space. The design features a simple and practical layout that maximises space while providing a cozy and welcoming atmosphere. Whether you're looking for a compact and efficient living space, or a stylish and modern studio space, Kit Homes Yass is the perfect choice

ENCLOSED	OTHER
17.22m <sup>2</sup>	3.20m <sup>2</sup>
<b>TOTAL 20.42m<sup>2</sup></b>	
1	1
1	

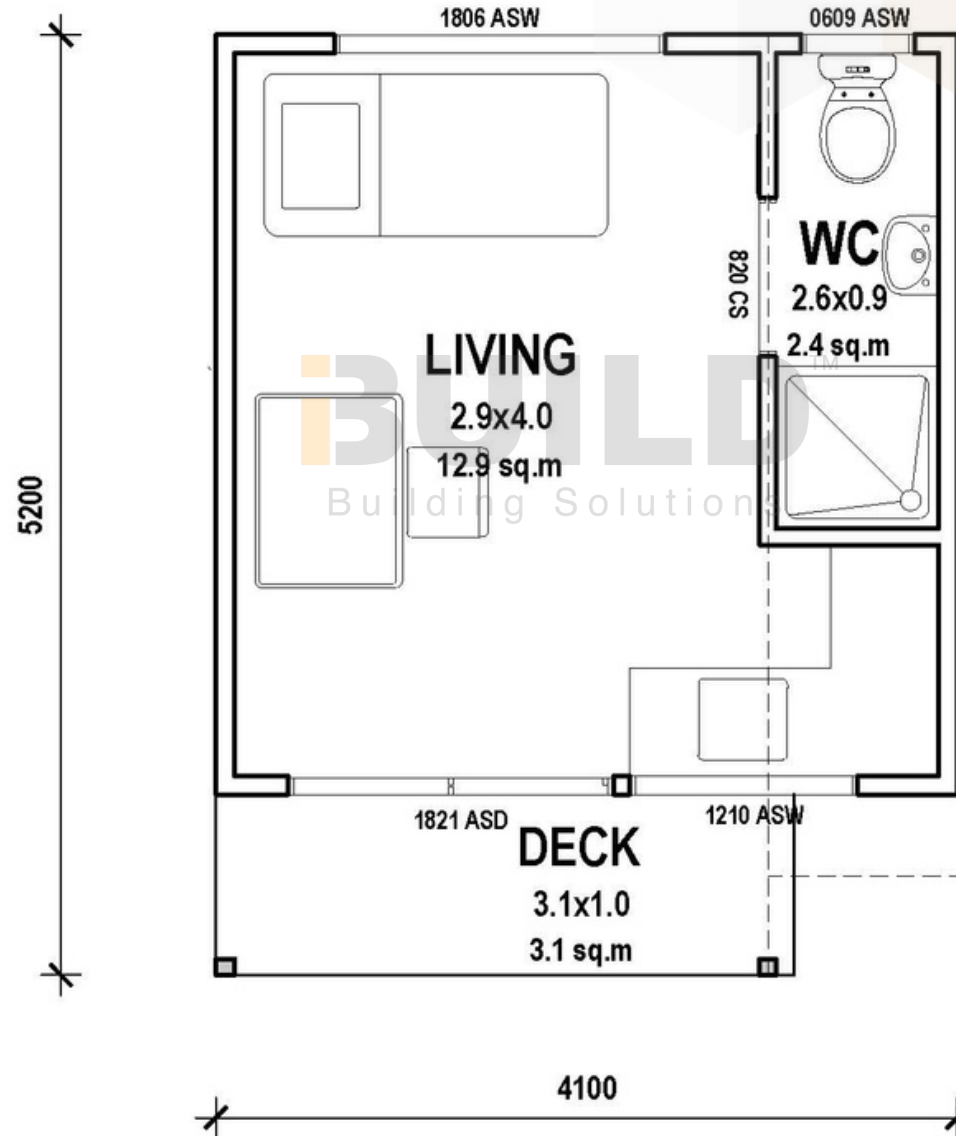


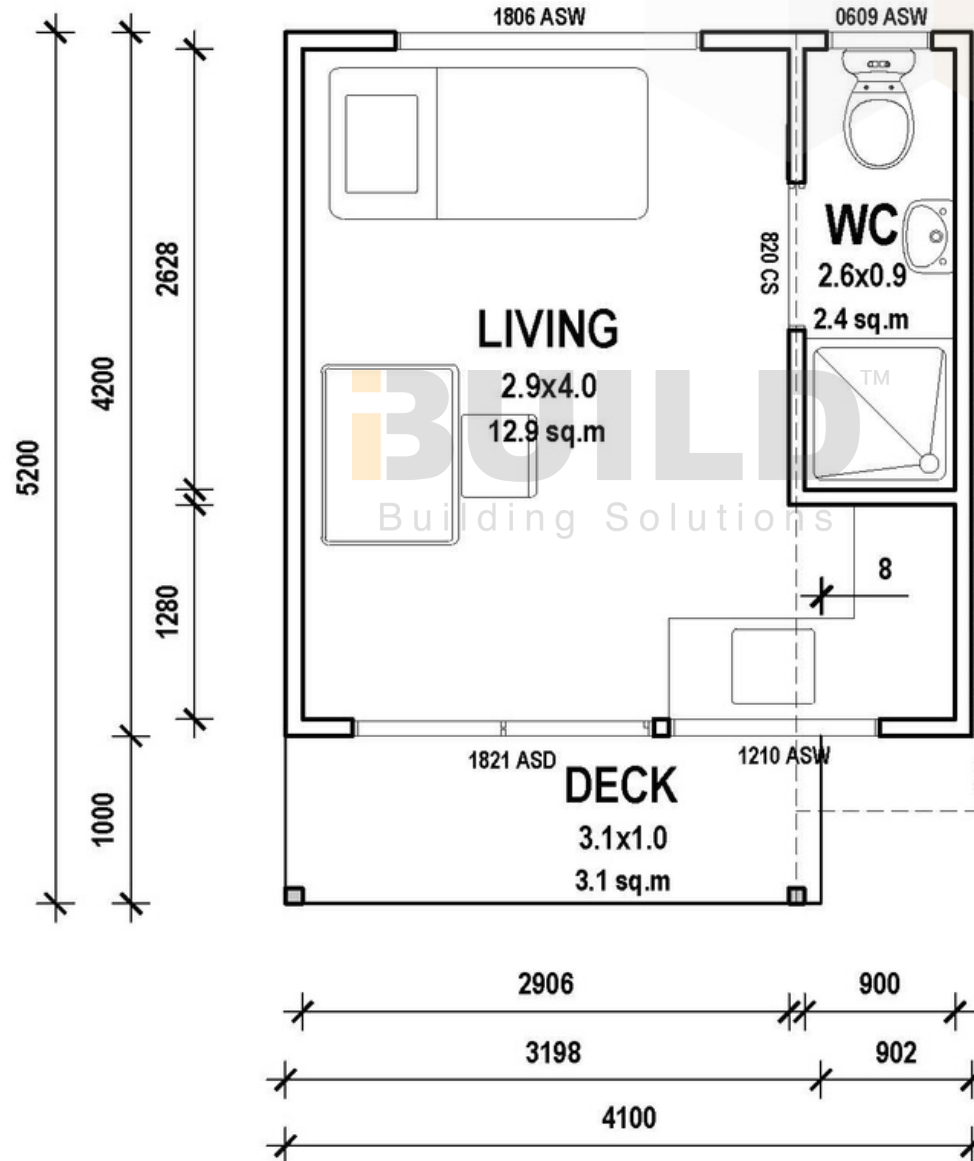
1800 679 268  
info@i-build.com.au  
www.i-build.com.au

[Facebook@ibuildau](#)  
[YouTube@ibuildbuilding](#)  
[Pinterest@ibuildbuildings](#)

Eastern Innovation  
5A Hartnett Close  
Mulgrave VIC 3170

© copyright iBuild - v9.17 20220930







**iBUILD**<sup>TM</sup>  
Building Solutions





**KIT HOMES**

# STAWELL

Kit Homes Stawell is a stylish and compact studio designed for modern comfort. This self-contained granny flat features an open floor plan with a contemporary bathroom.

ENCLOSED	OTHER
18.30m <sup>2</sup>	3.0m <sup>2</sup>
TOTAL 21.30m <sup>2</sup>	
1	1
1	



59<sup>TH</sup> AUSTRALIAN  
Export & Investment Awards



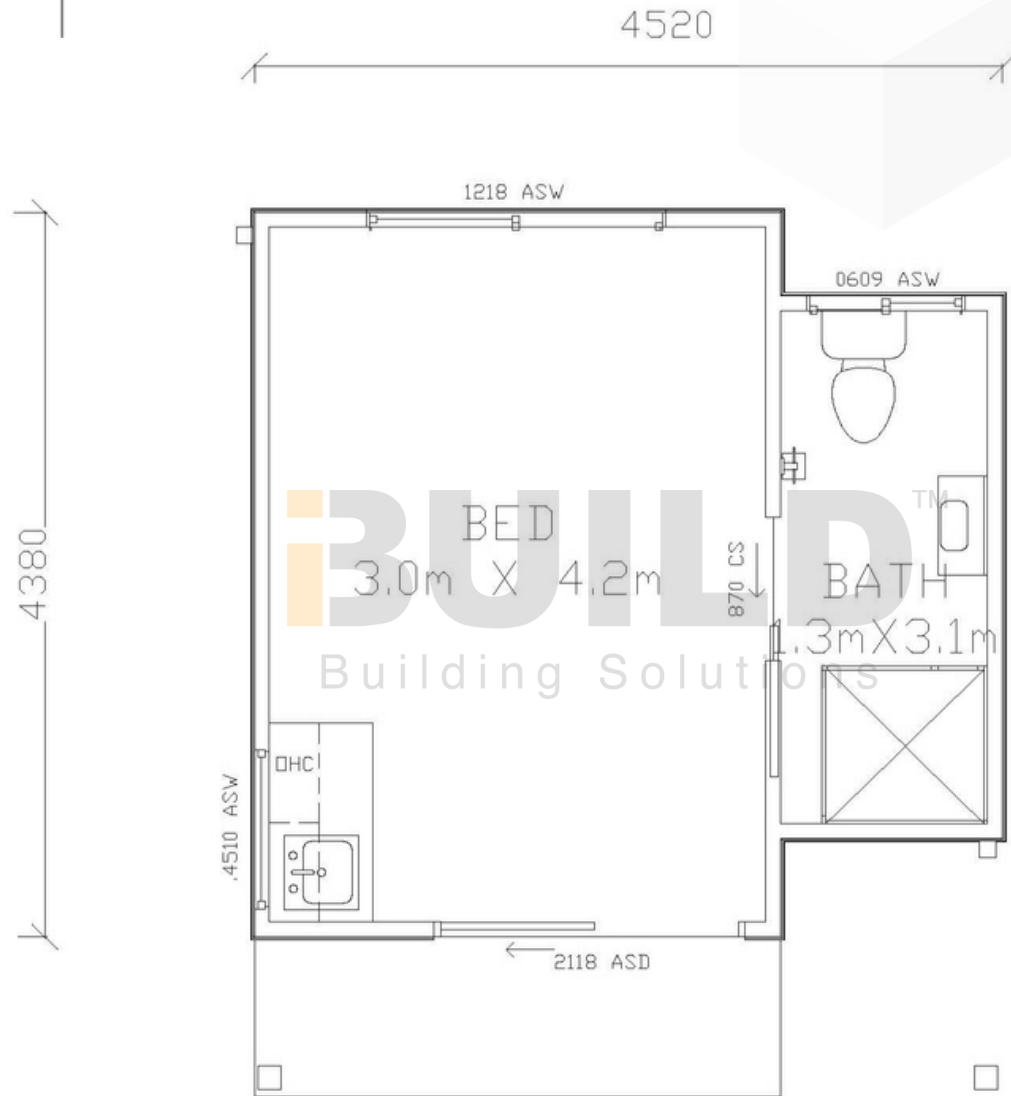
1800 679 268  
info@i-build.com.au  
www.i-build.com.au

Facebook@ibuildau  
YouTube@ibuildbuilding  
Pinterest @ibuildbuildings

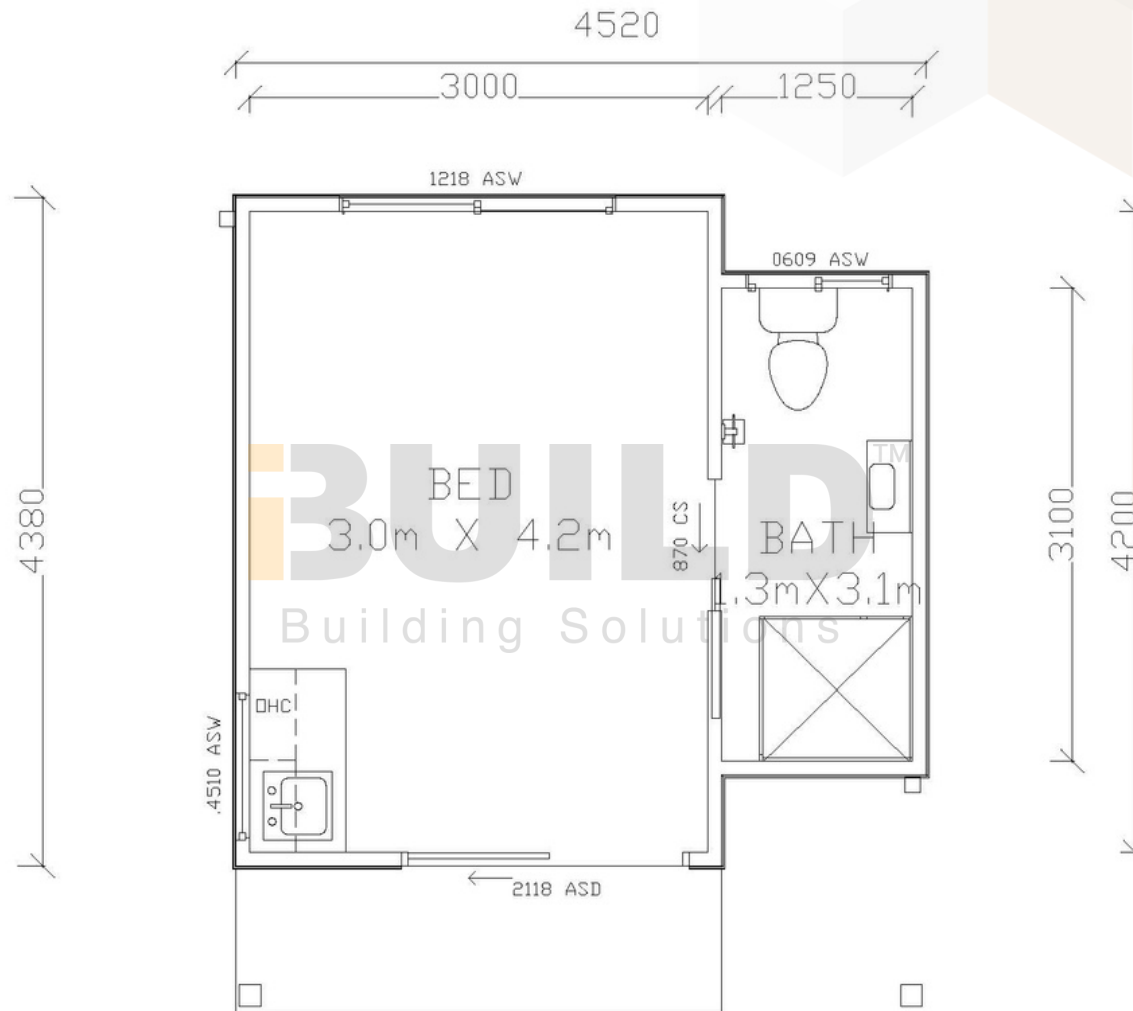
Eastern Innovation  
5A Hartnett Close  
Mulgrave VIC 3170

© copyright iBuild - v9.17 20220930





**iBUILD**<sup>TM</sup>  
Building Solutions







**KIT HOMES**

# WHYALLA

With its inviting open-style veranda, Kit Homes Whyalla is meticulously designed to accommodate the crafting of any lifestyle.

ENCLOSED	OTHER
44.00m <sup>2</sup>	14.40m <sup>2</sup>
<b>TOTAL 58.40m<sup>2</sup></b>	
1	1
1	



59<sup>TH</sup> AUSTRALIAN  
Export & Investment Awards

EXPORT AWARDS  
2021

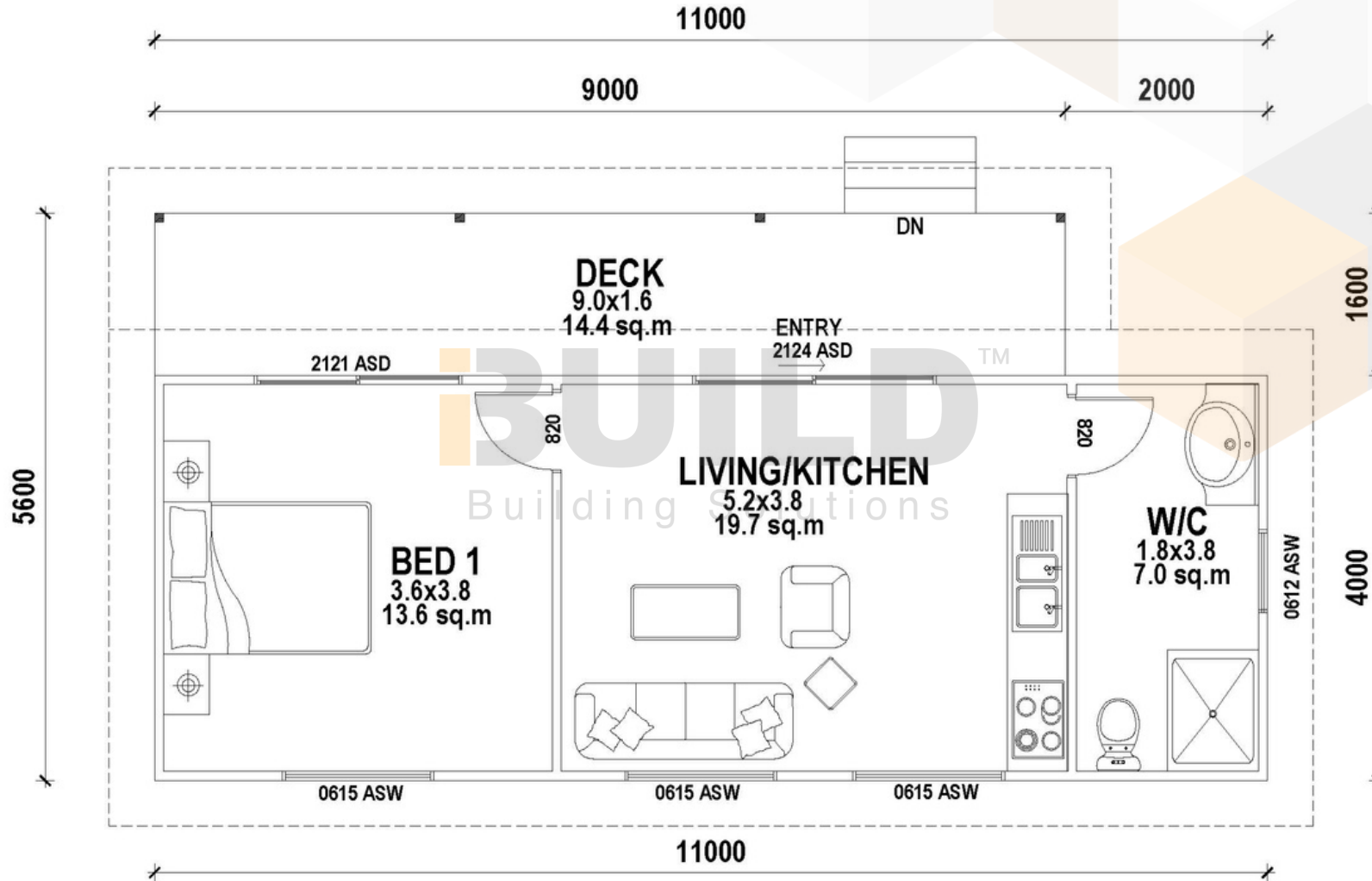
HUME BUSINESS AWARDS 2021

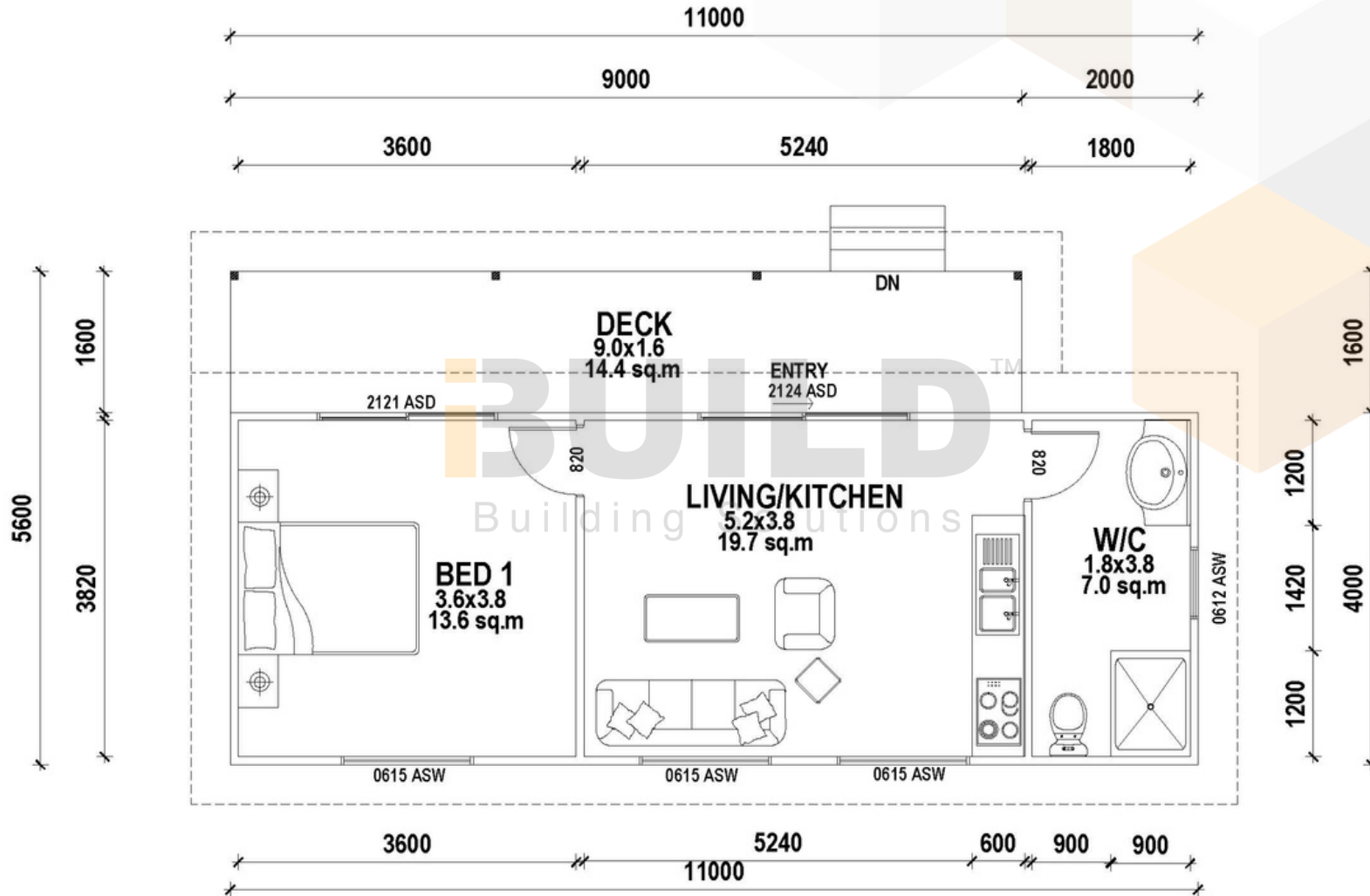
1800 679 268  
info@i-build.com.au  
www.i-build.com.au

Facebook@ibuildau  
YouTube@ibuildbuilding  
Pinterest@ibuildbuildings

Eastern Innovation  
5A Hartnett Close  
Mulgrave VIC 3170

© copyright iBuild - v9.17 20220930

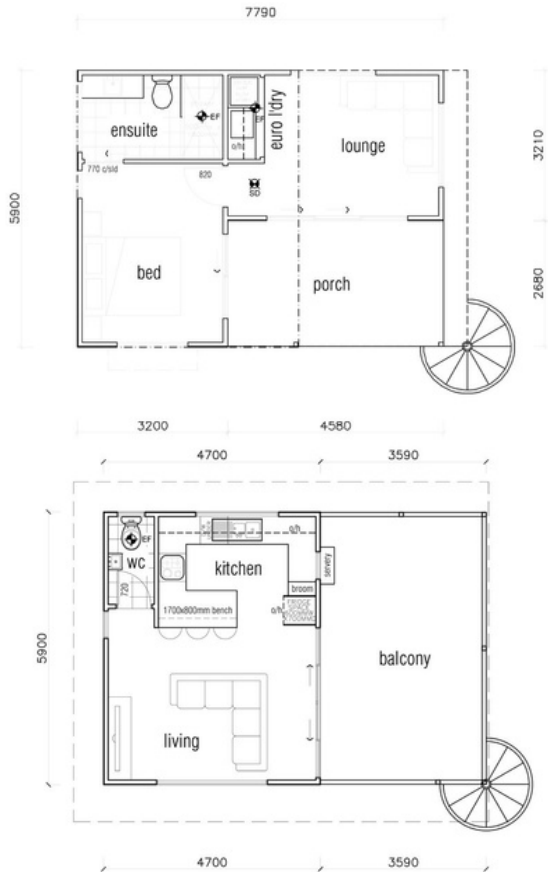
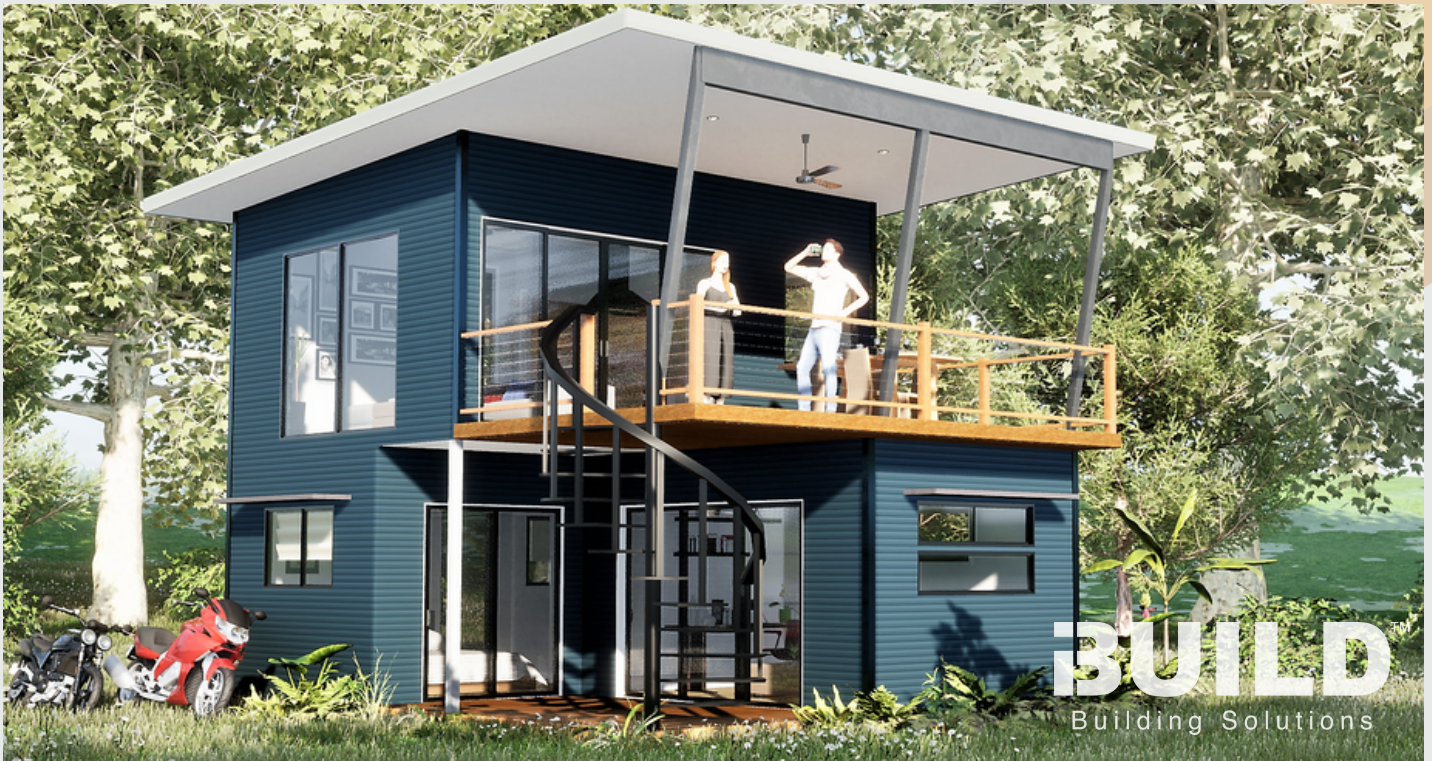






**iBUILD**<sup>TM</sup>  
Building Solutions





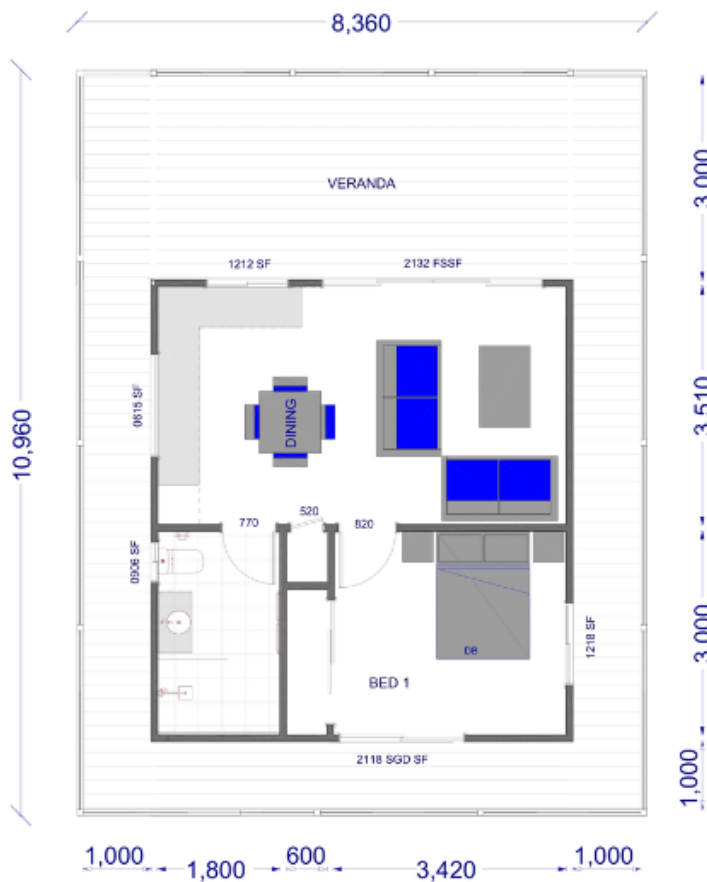
**KIT HOMES**

**ABBEEY VIEW**

The Abbey View Kit Home is an ideal choice for those seeking breathtaking scenic views from a spacious double-storey holiday house. The highlight of the home is an impressive entertainment deck, perfect for enjoying warm evenings with family and friends.

ENCLOSED	OTHER
61.34m <sup>2</sup>	33.37m <sup>2</sup>
<b>TOTAL 94.71m<sup>2</sup></b>	
1	2
	1

For a larger view of our floor plans, please check our website.



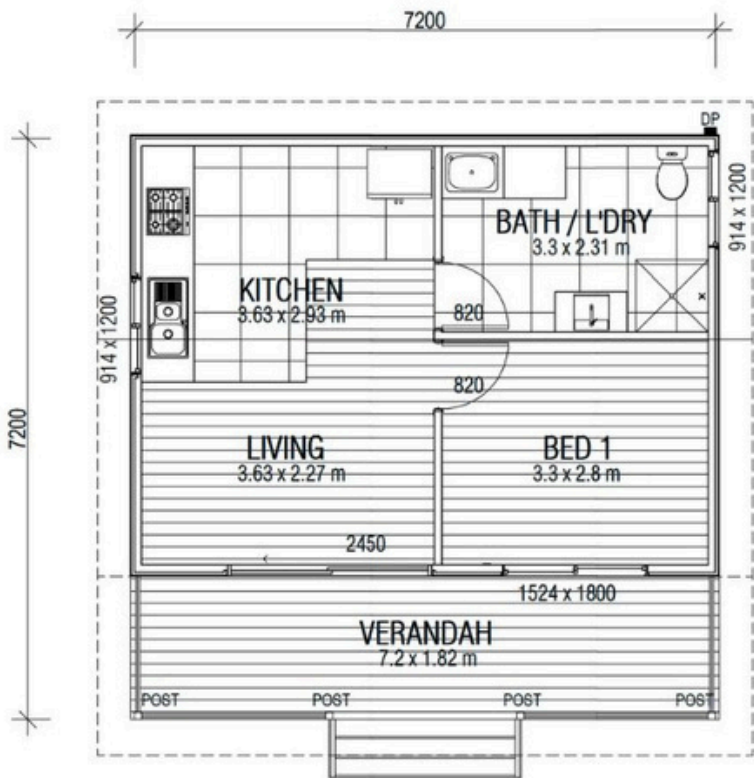
**KIT HOMES**

# Newman

The Kit Homes Newman has an all-encompassing verandah that gives you a vantage point to look out from in every direction. With a deluxe bedroom combined with a spacious living area, the Kit Homes Newman will leave you wanting for nothing.

ENCLOSED	OTHER	
42.17m <sup>2</sup>	49.44m <sup>2</sup>	
<b>TOTAL 91.61m<sup>2</sup></b>		
1	1	1

For a larger view of our floor plans, please check our website.



**KIT HOMES**

**OXFORD 44**

Kit Homes Oxford 44 offers independent living at its finest. With a spacious living and dining area, this one-bedroom kit home has everything you are looking for

ENCLOSED	OTHER
40.29m <sup>2</sup>	12.89m <sup>2</sup>
<b>TOTAL 53.18 m<sup>2</sup></b>	
1	1  1

For a larger view of our floor plans, please check our website.



**KIT HOMES**

**KINGAROY**

Kit Homes Kingaroy is the dream home you have been waiting for. With a large verandah and an open living room, the Kingaroy gives you the space to both entertain and relax. This one-bedroom home provides luxury living at an affordable price.

ENCLOSED	OTHER
64.94m <sup>2</sup>	26.49m <sup>2</sup>
<b>TOTAL 91.43m<sup>2</sup></b>	
1	1  1

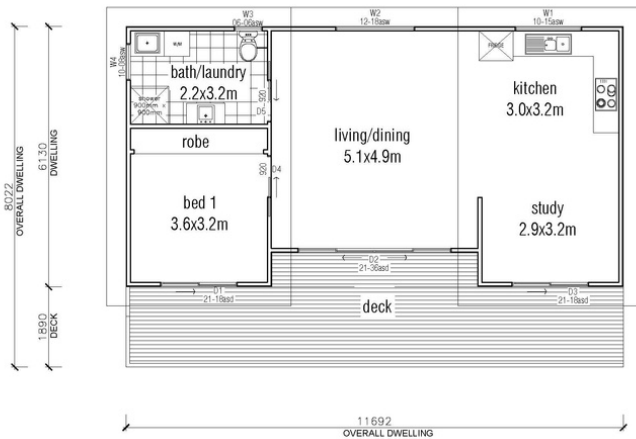
For a larger view of our floor plans, please check our website.



**KIT HOMES**

# Ballina 46

With a functional layout and an entertainer's verandah, this impressive one-bedroom home presents a rare and exciting opportunity to enjoy a relaxed lifestyle without compromise.



ENCLOSED	OTHER
<b>67.83m<sup>2</sup></b>	<b>25.96m<sup>2</sup></b>

**TOTAL 93.79m<sup>2</sup>**



For a larger view of our floor plans, please check our website.



**KIT HOMES**

**BERWICK**

The compact Kit Homes Berwick is ideal for a granny flat or independent living. The plan takes into account all the essentials in addition to a cosy living area and verandah.

ENCLOSED	OTHER
33.28m <sup>2</sup>	8.32m <sup>2</sup>
<b>TOTAL 41.60m<sup>2</sup></b>	
1	1
	1

For a larger view of our floor plans, please check our website.