



**BUILD**  
Building Solutions

**BUILD**<sup>TM</sup>  
Building Solutions

STRONGER • SMARTER • FASTER  
**MORE AFFORDABLE**

**KIT HOMES**

# Richmond

Step into Kit Homes Richmond, where smart design meets cozy living. This delightful 1-bedroom home features a contemporary bathroom and a compact yet functional kitchen. The living area opens onto a charming deck, perfect for relaxing or entertaining guests.

ENCLOSED <b>39.81m<sup>2</sup></b>	OTHER <b>8.07m<sup>2</sup></b>
<b>TOTAL 47.88m<sup>2</sup></b>	
1	1
	1



1800 679 268  
info@i-build.com.au  
www.i-build.com.au

Facebook@ibuildau  
YouTube@ibuildbuilding  
Pinterest@ibuildbuildings

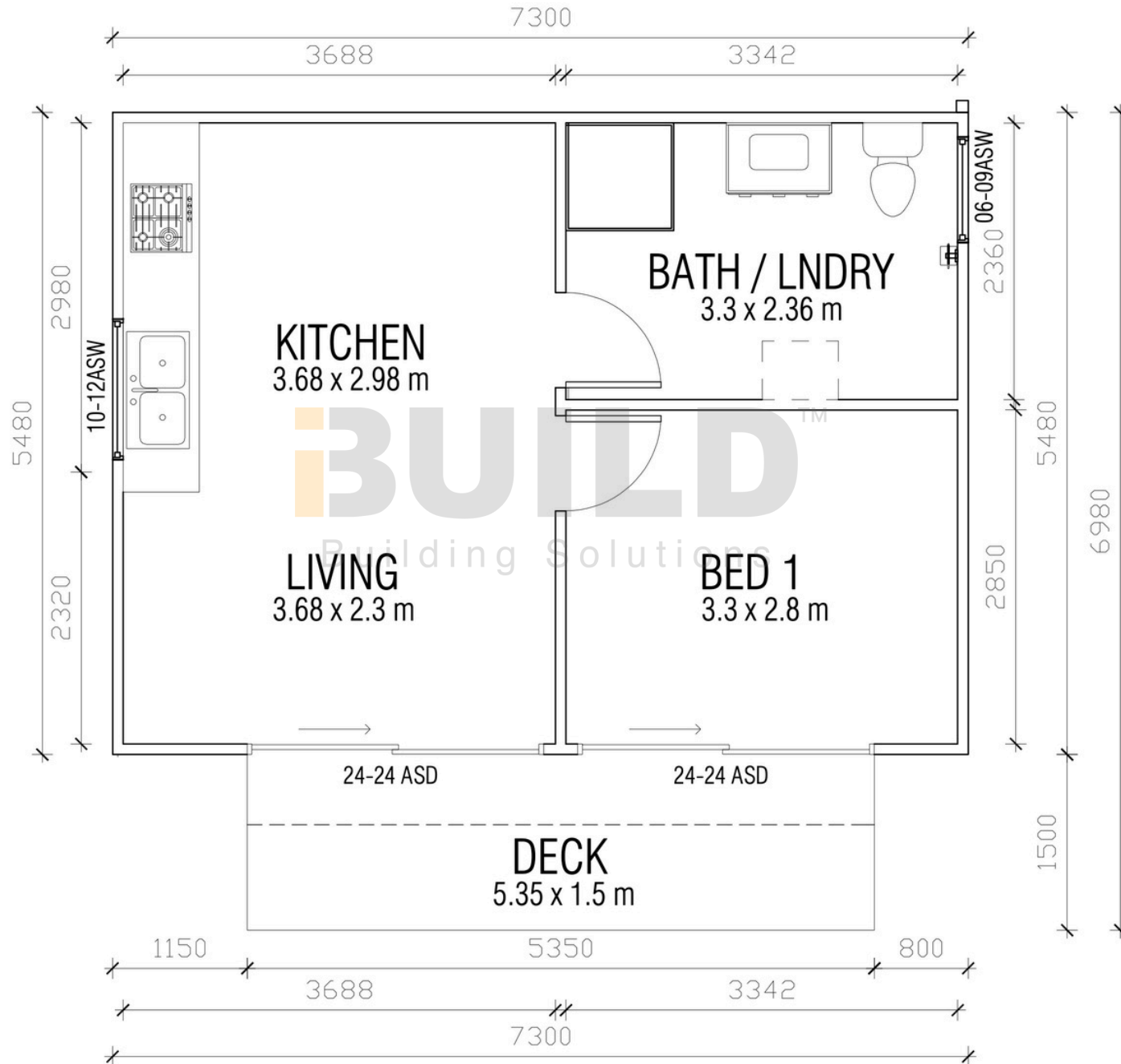
Eastern Innovation  
5A Hartnett Close  
Mulgrave VIC 3170

© copyright iBuild - v9.17 20220930

# SIMPLIFIED FLOOR PLAN



# DETAILED FLOOR PLAN







**BUILD**<sup>TM</sup>  
Building Solutions

STRONGER • SMARTER • FASTER  
**MORE AFFORDABLE**

**BUILD**<sup>TM</sup>  
Building Solutions

**KIT HOMES**

**OAKDALE METRO**

Featuring a generously sized living room perfect for relaxation and entertainment, Kit Homes Oakdale Metro also boasts a charming outdoor deck that extends your living space into nature. Ideal for singles or couples, the Oakdale MV is perfect for those seeking a minimalist lifestyle without sacrificing comfort.

ENCLOSED  
**20.84m<sup>2</sup>**

OTHER  
**4.46m<sup>2</sup>**

**TOTAL 25.3m<sup>2</sup>**



**BUILD**<sup>TM</sup>  
Building Solutions

59<sup>TH</sup> AUSTRALIAN  
Export & Investment Awards

INTERNATIONAL EXPORT  
AWARDS  
2021

1800 679 268  
info@i-build.com.au  
www.i-build.com.au

Facebook@ibuildau  
YouTube@ibuildbuilding  
Pinterest@ibuildbuildings

Eastern Innovation  
5A Hartnett Close  
Mulgrave VIC 3170

© copyright iBuild - v9.17 20220930

