

# VALLEY HEIGHTS

4 Bedroom / 211.05 m<sup>2</sup>

**BUILD**<sup>™</sup>  
*Homes*



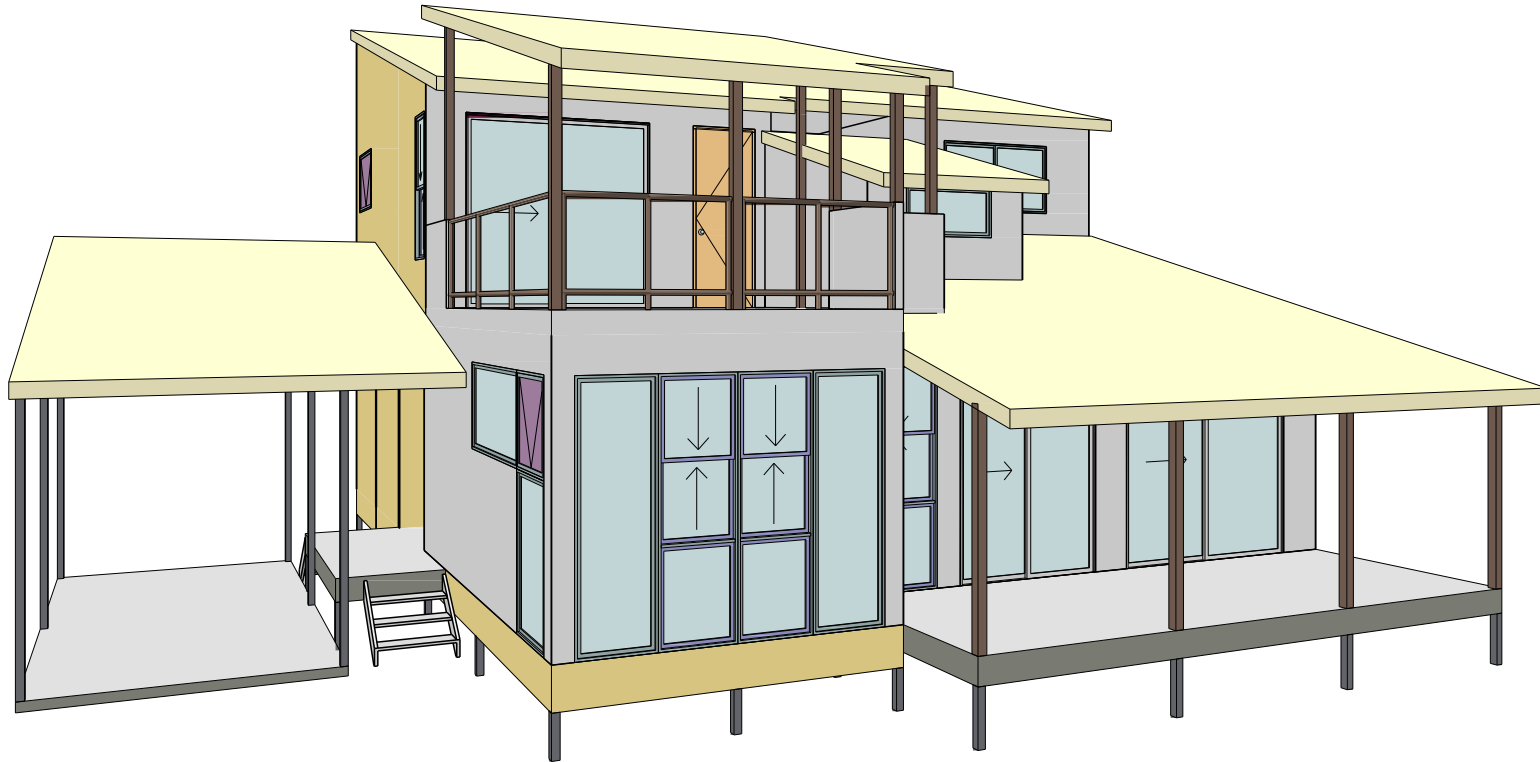
FOR ILLUSTRATION PURPOSES ONLY  
HOUSE DESIGN DOES NOT INCLUDE GARAGE AS SHOWN

HOUSE DESIGN- VALLEY HEIGHTS 4 BED

# VALLEY HEIGHTS

4 Bedroom / 211.05 m<sup>2</sup>

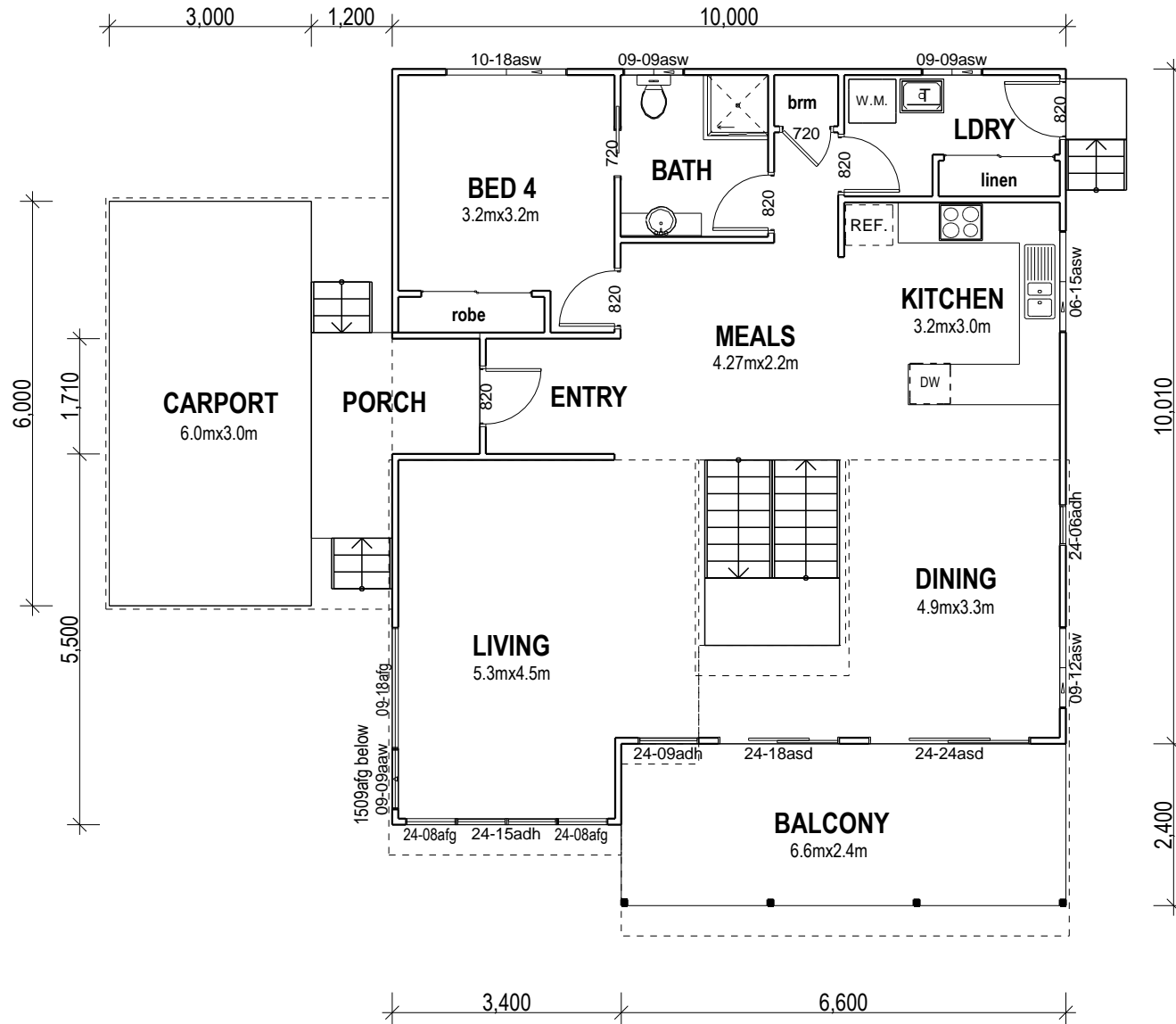
**BUILD**<sup>TM</sup>  
*Homes*



HOUSE DESIGN- VALLEY HEIGHTS 4 BED

# VALLEY HEIGHTS

4 Bedroom / 211.05 m<sup>2</sup>



## GROUND FLOOR PLAN

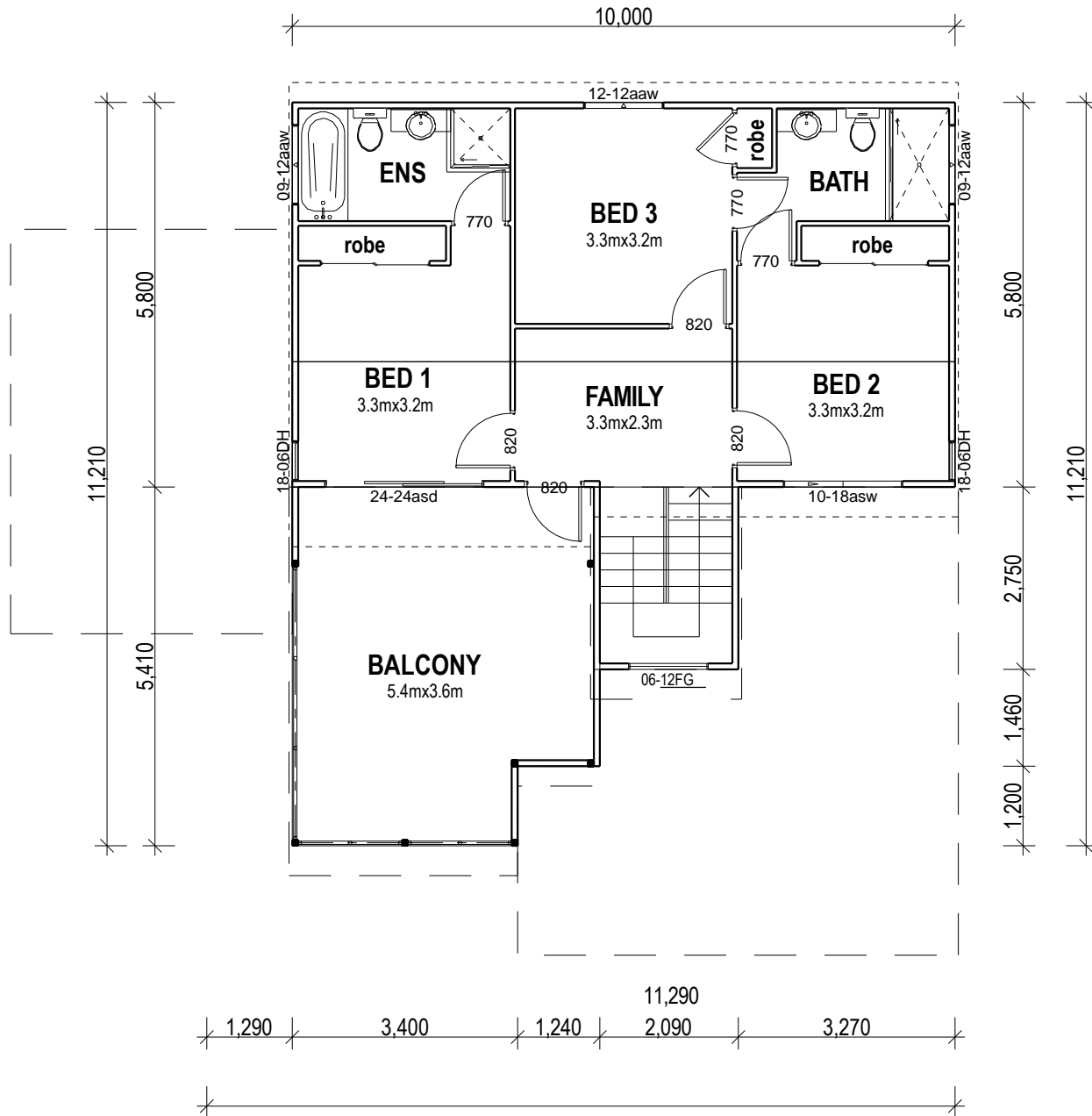
1:100

LIVING AREA:	165.960 Sq.m
CARPORT:	18.000 Sq.m
BALCONIES:	39.210 Sq.m
PORCH:	6.330 Sq.m
TOTAL AREA:	229.500 Sq.m
	24.702 Sq

HOUSE DESIGN- VALLEY HEIGHTS 4 BED

# VALLEY HEIGHTS

4 Bedroom / 211.05 m<sup>2</sup>



## FIRST FLOOR PLAN

1:100

# Thank you for your Attention !

For more information, please visit <http://www.i-build.com.au>  
contact us on [info@i-build.com.au](mailto:info@i-build.com.au)



<http://i-build.com.au/>



<http://facebook.com/ibuildau/>



<http://pinterest.com/ibuildbuildings/>



<http://youtube.com/user/ibuildbuilding>



<http://plus.google.com/+I-buildAu/>