



**BUILD**<sup>TM</sup>  
Building Solutions

**BUILD**<sup>TM</sup>  
Building Solutions

STRONGER • SMARTER • FASTER  
**MORE AFFORDABLE**

**KIT HOMES**

**Eastwood**

Step into the inviting Kit Homes Eastwood, featuring two cozy bedrooms and a stylish bathroom. The spacious living and dining area seamlessly integrates with a modern kitchen, while the expansive deck offers an ideal space for outdoor entertainment and relaxation.

ENCLOSED <b>73.26m<sup>2</sup></b>	OTHER <b>60.69m<sup>2</sup></b>
<b>TOTAL 133.95m<sup>2</sup></b>	
2	1
	1



59<sup>TH</sup> AUSTRALIAN  
Export & Investment Awards

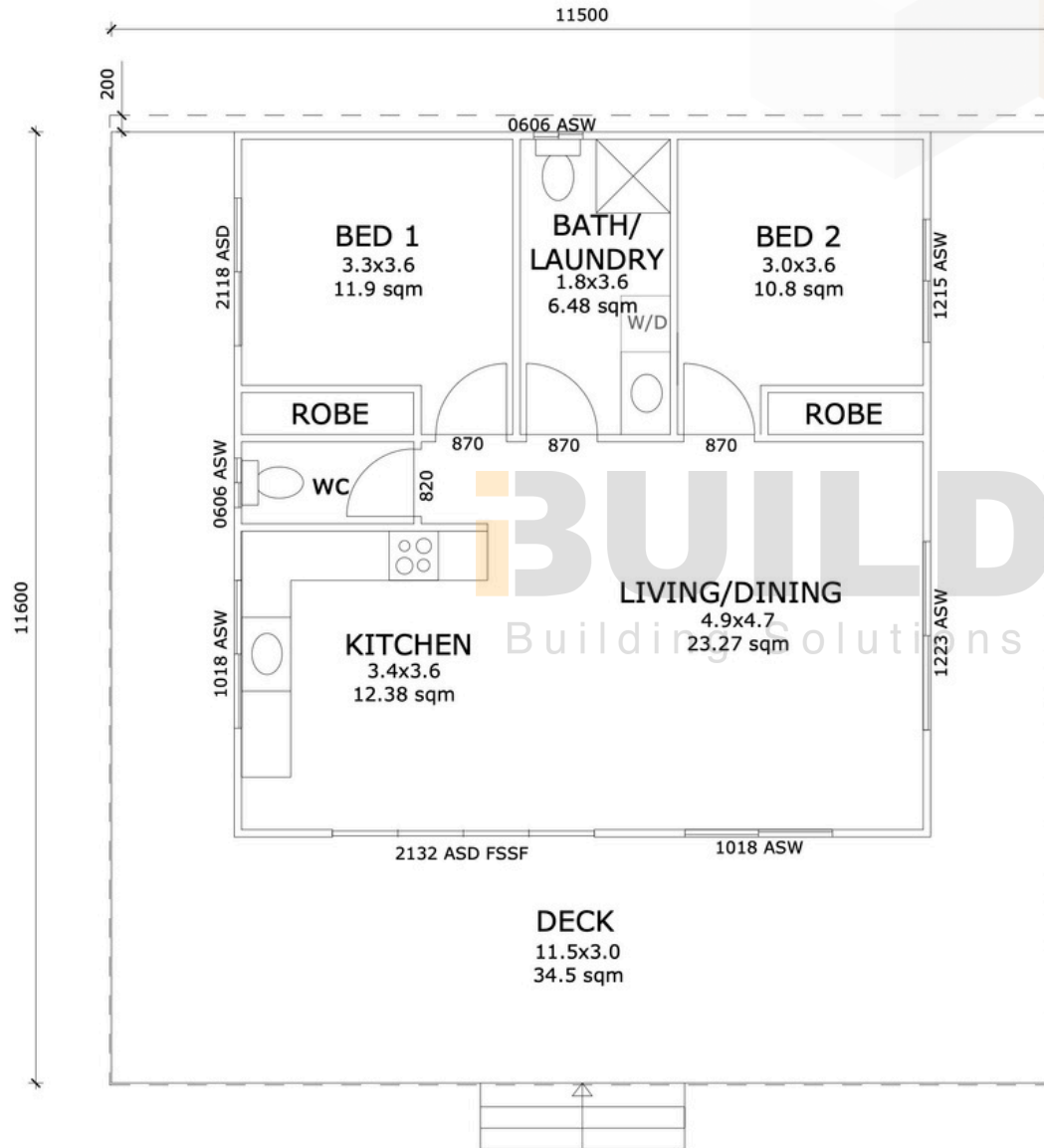


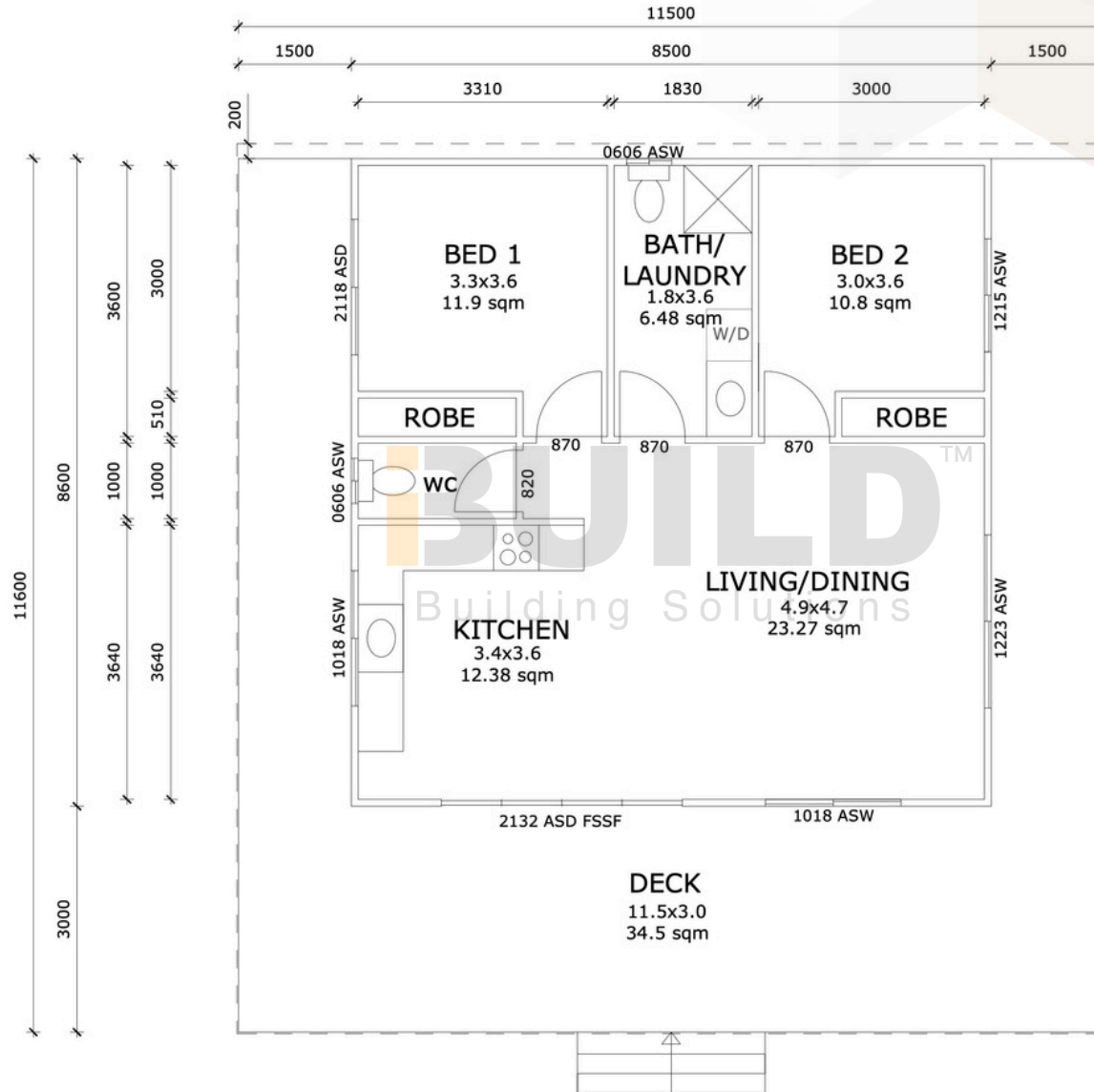
1800 679 268  
info@i-build.com.au  
www.i-build.com.au

Facebook@[ibuildau](#)  
YouTube@[ibuildbuilding](#)  
Pinterest@[ibuildbuildings](#)

Eastern Innovation  
5A Hartnett Close  
Mulgrave VIC 3170

© copyright iBuild - v9.17 20220930





1800 679 268  
info@i-build.com.au  
www.i-build.com.au

Facebook @i-build  
YouTube @i-build  
Pinterest @i-buildbuilding  
Pinterest @i-buildbuildings

Eastern Innovation  
5A Hartnett Close  
Mulgrave VIC 3170










## GRANNY FLATS BELGRAVE

Granny Flats Belgrave offers a dynamic interior with its open-plan living and two bedrooms. Along with its deck, this granny flat has everything you need.

ENCLOSED	OTHER
58.45m <sup>2</sup>	5.7m <sup>2</sup>
<b>TOTAL 64.15m<sup>2</sup></b>	
 2	 1
	 1



1800 679 268  
info@i-build.com.au  
www.i-build.com.au

Facebook@ibuildau  
YouTube@ibuildbuilding  
Pinterest@ibuildbuildings

Eastern Innovation  
5A Hartnett Close  
Mulgrave VIC 3170

© copyright iBuild - v9.17 20220930













**BUILD**  
Building Solutions

**BUILD**<sup>TM</sup>  
Building Solutions

STRONGER • SMARTER • FASTER  
**MORE AFFORDABLE**



**KIT HOMES**

**Ararat**

This comfortable and light-filled design features two cozy bedrooms, a spacious kitchen and a private back porch. Experience comfort and elegance in every corner of this thoughtfully crafted home.

ENCLOSED	OTHER
78.3m <sup>2</sup>	7.0m <sup>2</sup>
<b>TOTAL 85.3m<sup>2</sup></b>	
2	1
1	

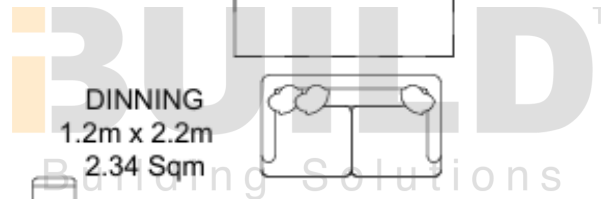
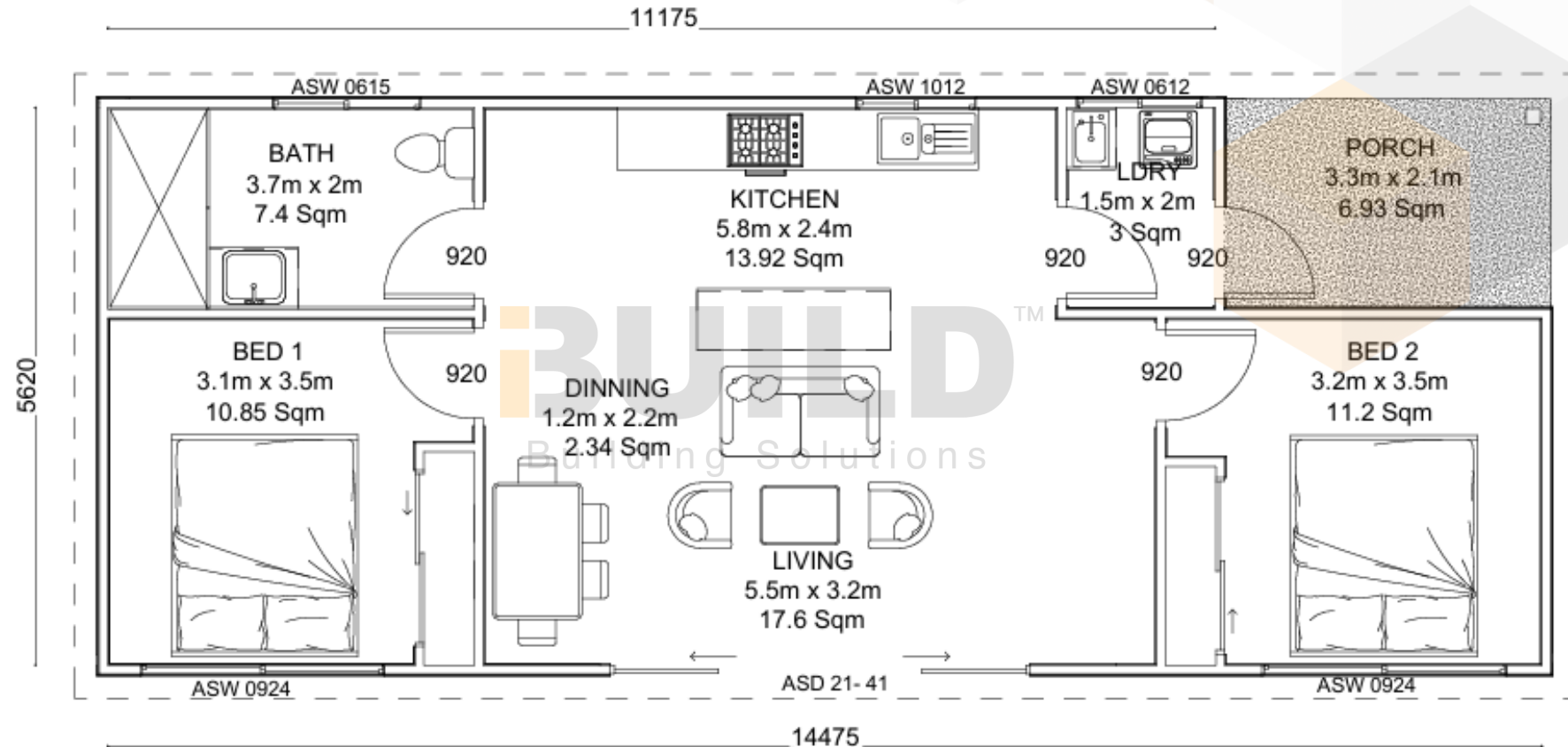


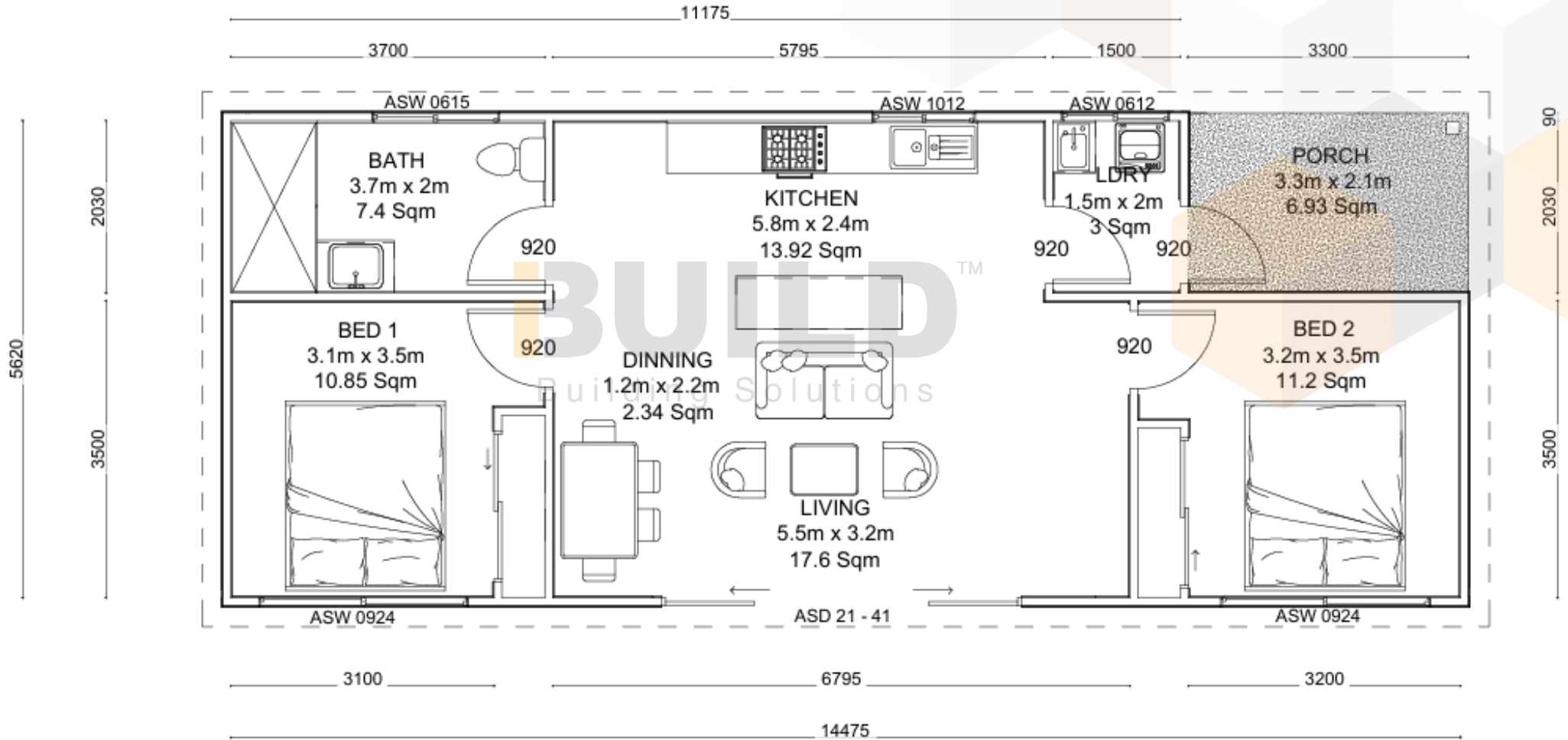
1800 679 268  
info@i-build.com.au  
www.i-build.com.au

Facebook@ibuildau  
YouTube@ibuildbuilding  
Pinterest@ibuildbuildings

Eastern Innovation  
5A Hartnett Close  
Mulgrave VIC 3170

© copyright iBuild - v9.17 20220930









**iBUILD™**  
Building Solutions

STRONGER • SMARTER • FASTER  
**MORE AFFORDABLE**

**KIT HOMES**

**AVILA SSD**

Introducing the Kit Homes AVILA SSD, the sister to the Avila. This new spin on an iBuild classic enhances everything that is loved about the Avila, elevating it to the next level. It is meticulously designed with both small secondary dwelling and liveable standards integrated into its very essence.

ENCLOSED	OTHER
60m <sup>2</sup>	18m <sup>2</sup>
<b>TOTAL</b>	<b>78m<sup>2</sup></b>
2	1
	1



59<sup>TH</sup> AUSTRALIAN  
Export & Investment Awards

EXPORT  
AWARDS  
2021

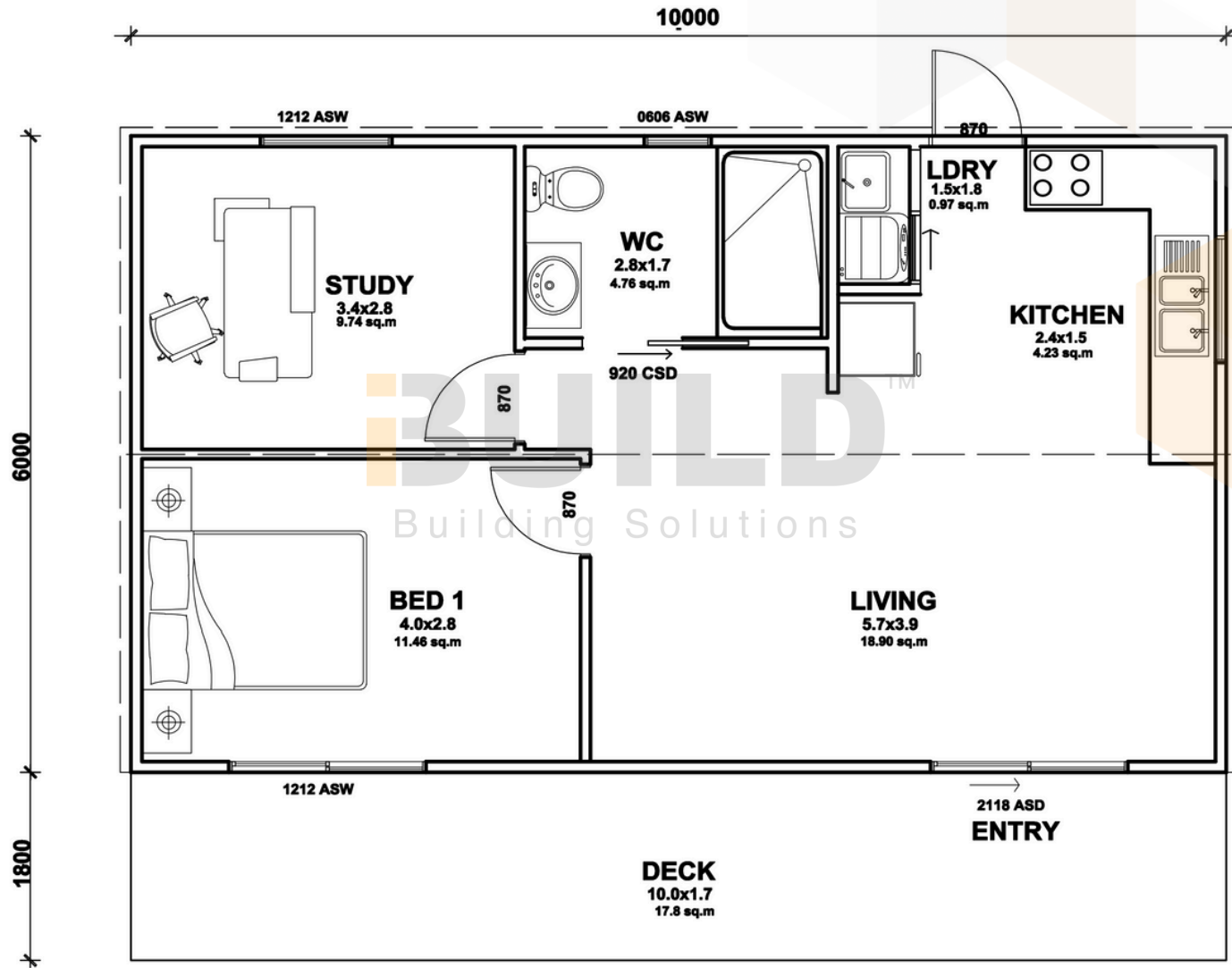
HUME BUSINESS  
AWARDS 2021

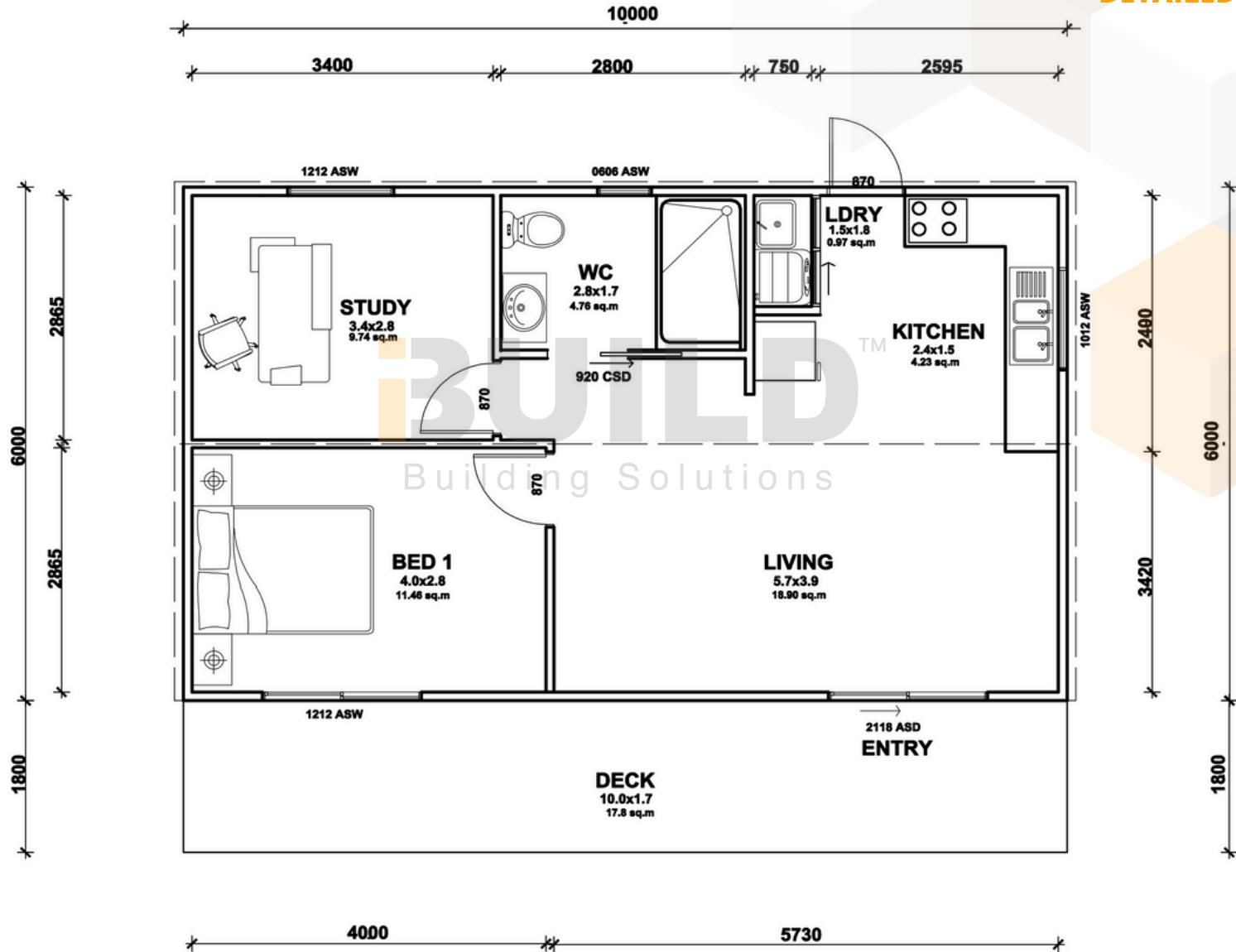
1800 679 268  
info@i-build.com.au  
www.i-build.com.au

Facebook@ibuildau  
YouTube@ibuildbuilding  
Pinterest@ibuildbuildings

Eastern Innovation  
5A Hartnett Close  
Mulgrave VIC 3170

© copyright iBuild - v9.17 20220930







**iBUILD**  
Building Solutions





**BUILD**<sup>TM</sup>  
Building Solutions

STRONGER • SMARTER • FASTER  
**MORE AFFORDABLE**

**BUILD**<sup>TM</sup>  
Building Solutions

**KIT HOMES**  
**AVILA**

With a full verandah across the front, the Avila is always a winner for folks looking at homes of this size.

ENCLOSED	OTHER
60.0m <sup>2</sup>	18.0m <sup>2</sup>
<b>TOTAL 78.0m<sup>2</sup></b>	
2	1
	1



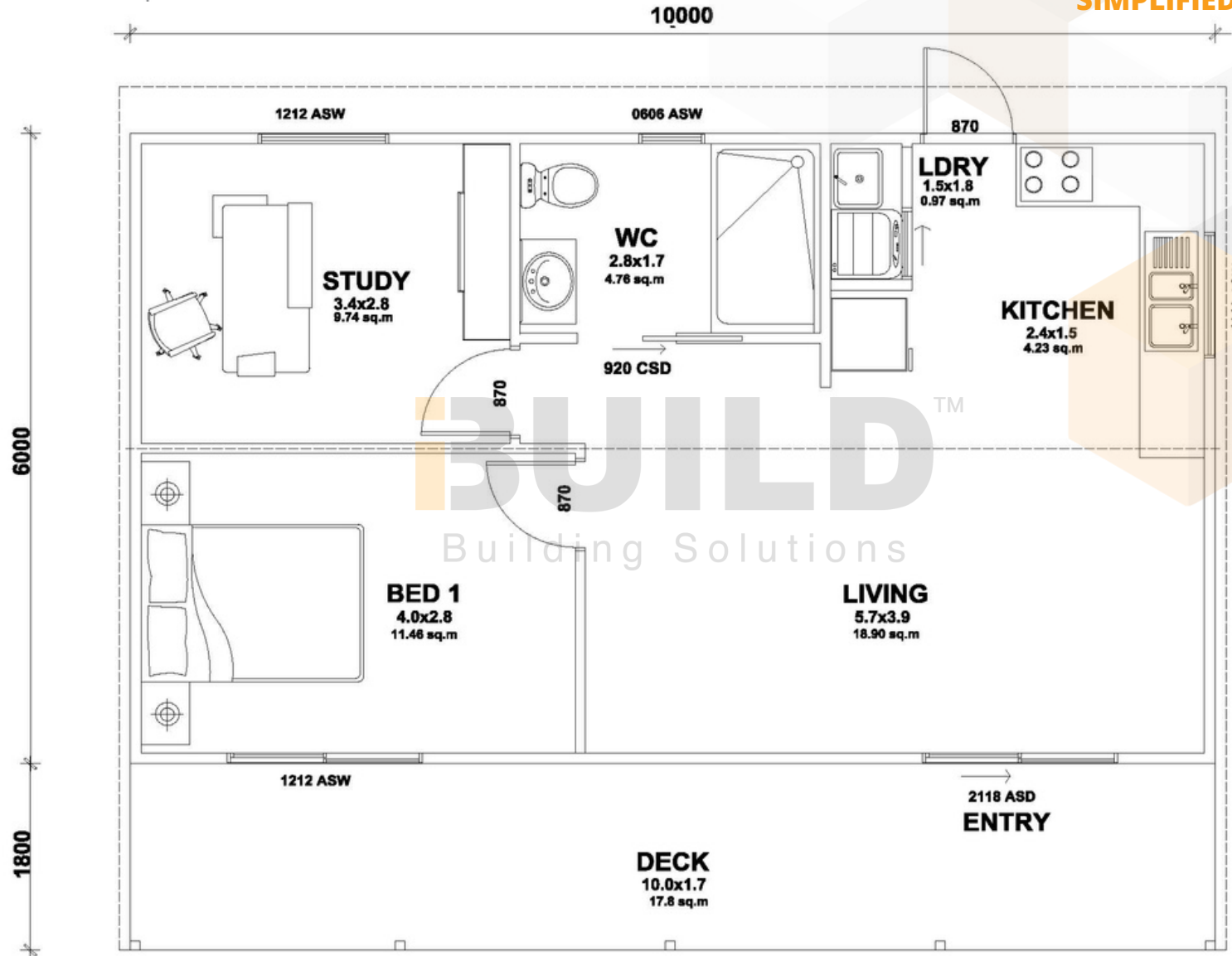
1800 679 268  
info@i-build.com.au  
www.i-build.com.au

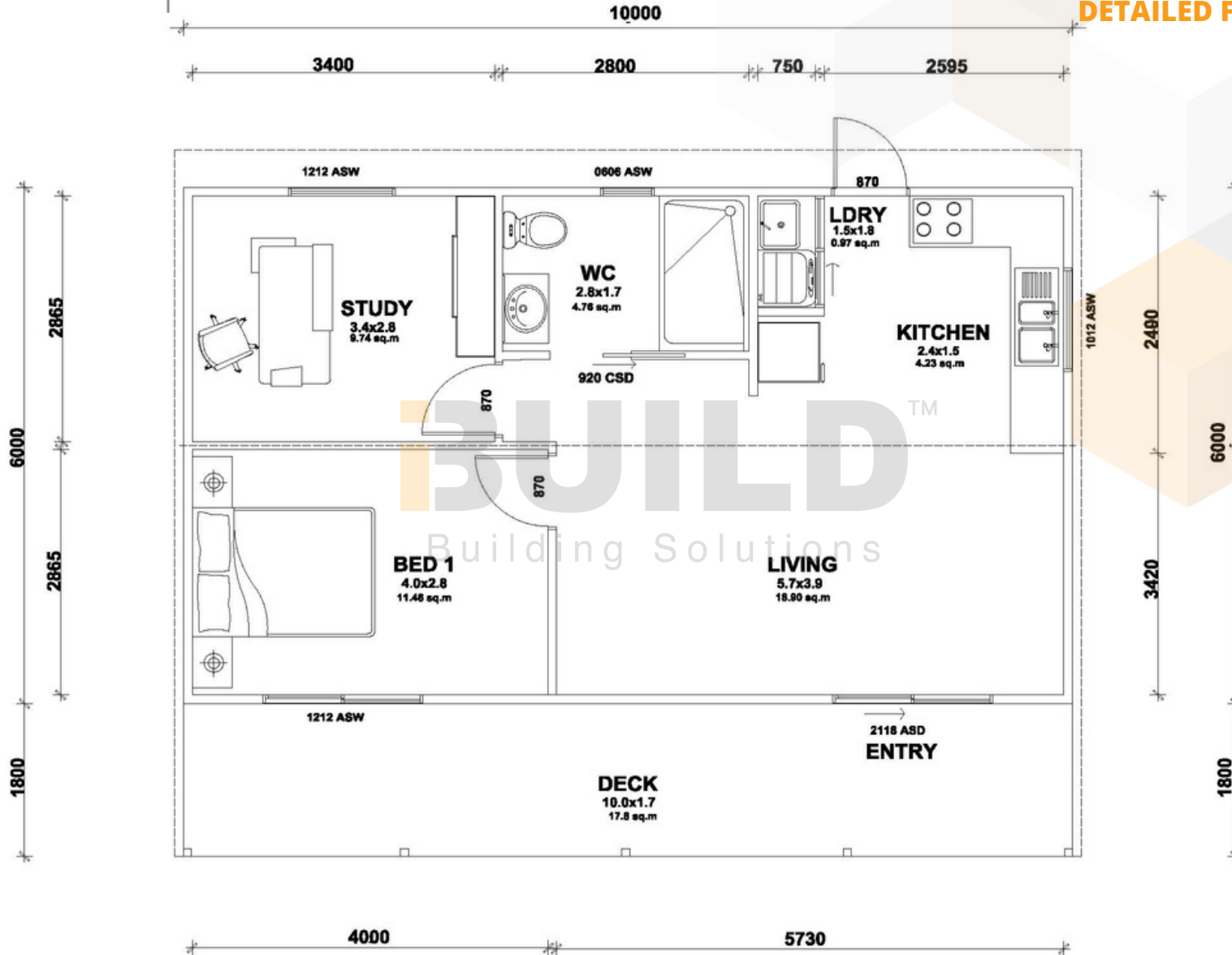
Facebook@ibuildau  
YouTube@ibuildbuilding  
Pinterest@ibuildbuildings

Eastern Innovation  
5A Hartnett Close  
Mulgrave VIC 3170

© copyright iBuild - v9.17 20220930

**BUILD**<sup>TM</sup>  
Building Solutions







**iBUILD**<sup>TM</sup>  
Building Solutions



**iBUILD**  
Building Solutions

**iBUILD**<sup>TM</sup>  
Building Solutions

STRONGER • SMARTER • FASTER  
**MORE AFFORDABLE**

**KIT HOMES**

**BAYVIEW**

Kit Homes Bayview has everything you need for the young family, or those just starting out. The verandah provides shade across the front of the house, adding to the appeal of this two-bedroom home.

ENCLOSED	OTHER
71.2m <sup>2</sup>	12.8m <sup>2</sup>
<b>TOTAL 84.0m<sup>2</sup></b>	
2	1
	1



59<sup>TH</sup> AUSTRALIAN  
Export & Investment Awards

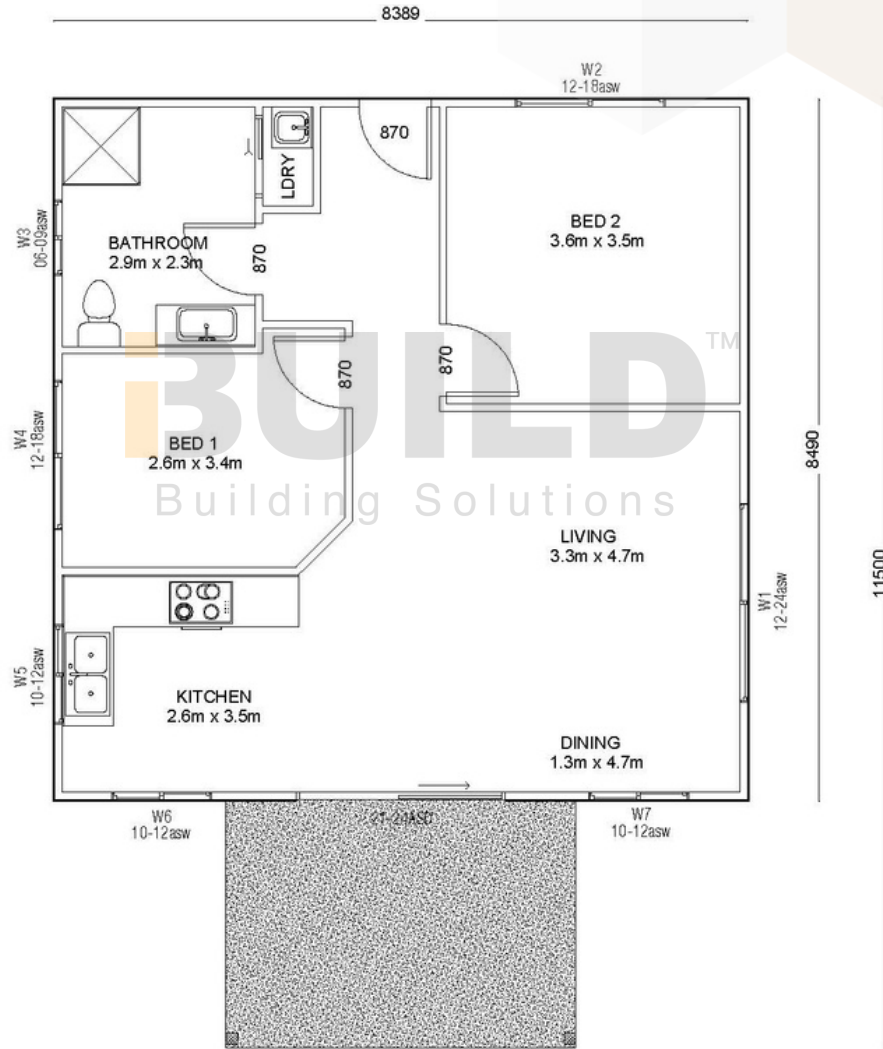
EXPORT  
AWARDS  
2021

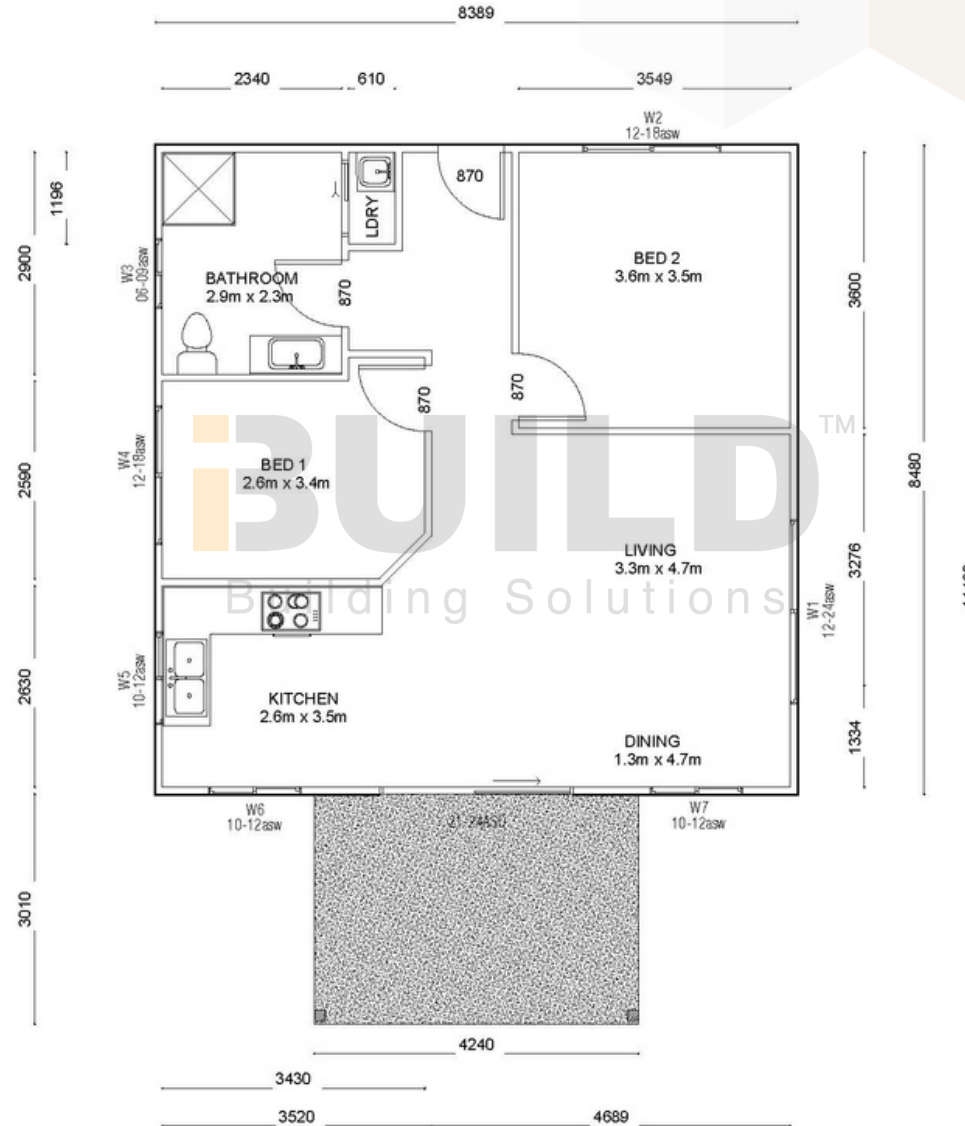
1800 679 268  
info@i-build.com.au  
www.i-build.com.au

Facebook@ibuildau  
YouTube@ibuildbuilding  
Pinterest@ibuildbuildings

Eastern Innovation  
5A Hartnett Close  
Mulgrave VIC 3170

© copyright iBuild - v9.17 20220930







**BUILD**<sup>TM</sup>  
Building Solutions





**KIT HOMES**

# CASA BIANCA 42

The Casa Bianca 42, sister to the original Kit Homes Casa Bianca, similarly evokes a perfect atmosphere in a compact kit home. With two bedrooms and an open living area offering panoramic views, the Kit Homes Casa Bianca 42 brings tranquility to your doorstep.

ENCLOSED	OTHER
75.69 m <sup>2</sup>	0.00 m <sup>2</sup>
<b>TOTAL 75.69 m<sup>2</sup></b>	
2	1
	1

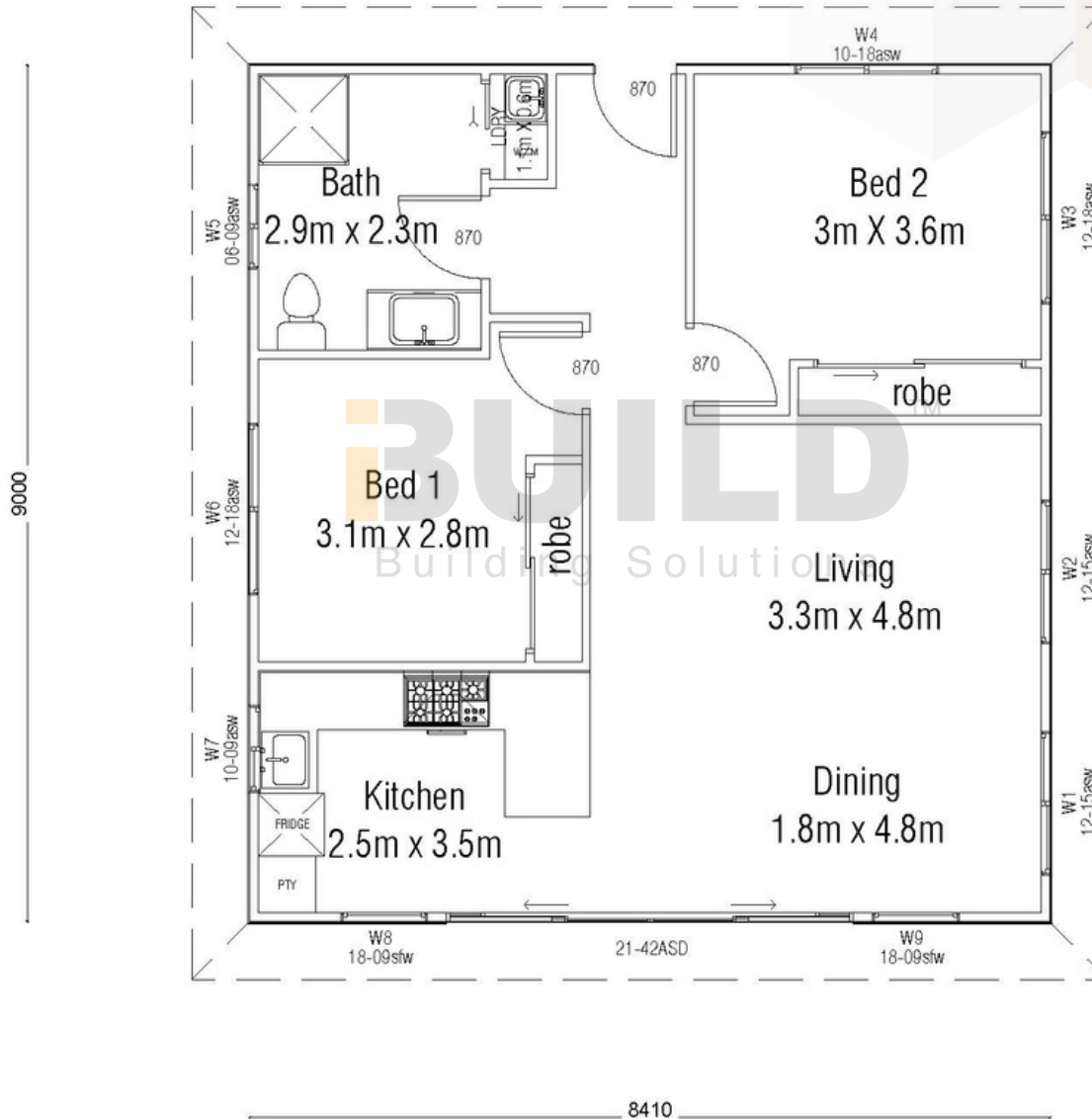


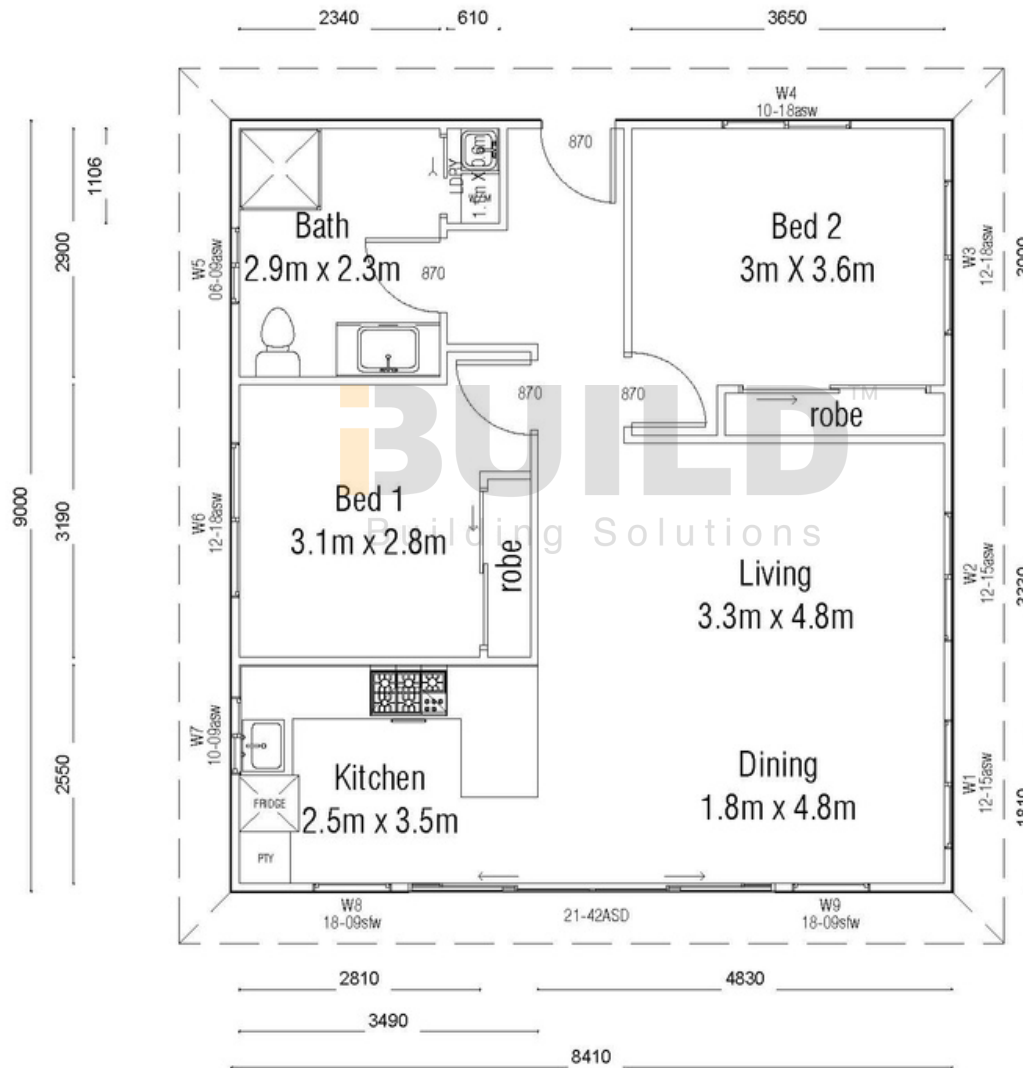
1800 679 268  
 info@i-build.com.au  
 www.i-build.com.au

[Facebook@ibuildau](#)  
[YouTube@ibuildbuilding](#)  
[Pinterest@ibuildbuildings](#)

Eastern Innovation  
 5A Hartnett Close  
 Mulgrave VIC 3170

© copyright iBuild - v9.17 20220930







**iBUILD**<sup>TM</sup>  
Building Solutions



**iBUILD™**  
Building Solutions

STRONGER • SMARTER • FASTER  
**MORE AFFORDABLE**

**KIT HOMES**

**CASA BIANCA**

Kit Homes Casa Bianca offers charm and versatility, crafted for exceptional comfort. Featuring two spacious bedrooms and a contemporary bathroom, it is perfect for small families or couples. Combining functionality with elegance, it creates a truly inviting living space.

ENCLOSED  
**75.7m<sup>2</sup>**

OTHER  
**0m<sup>2</sup>**

**TOTAL 75.7m<sup>2</sup>**



59<sup>TH</sup> AUSTRALIAN  
Export & Investment Awards

INTERNATIONAL  
EXPORT  
AWARDS  
2021

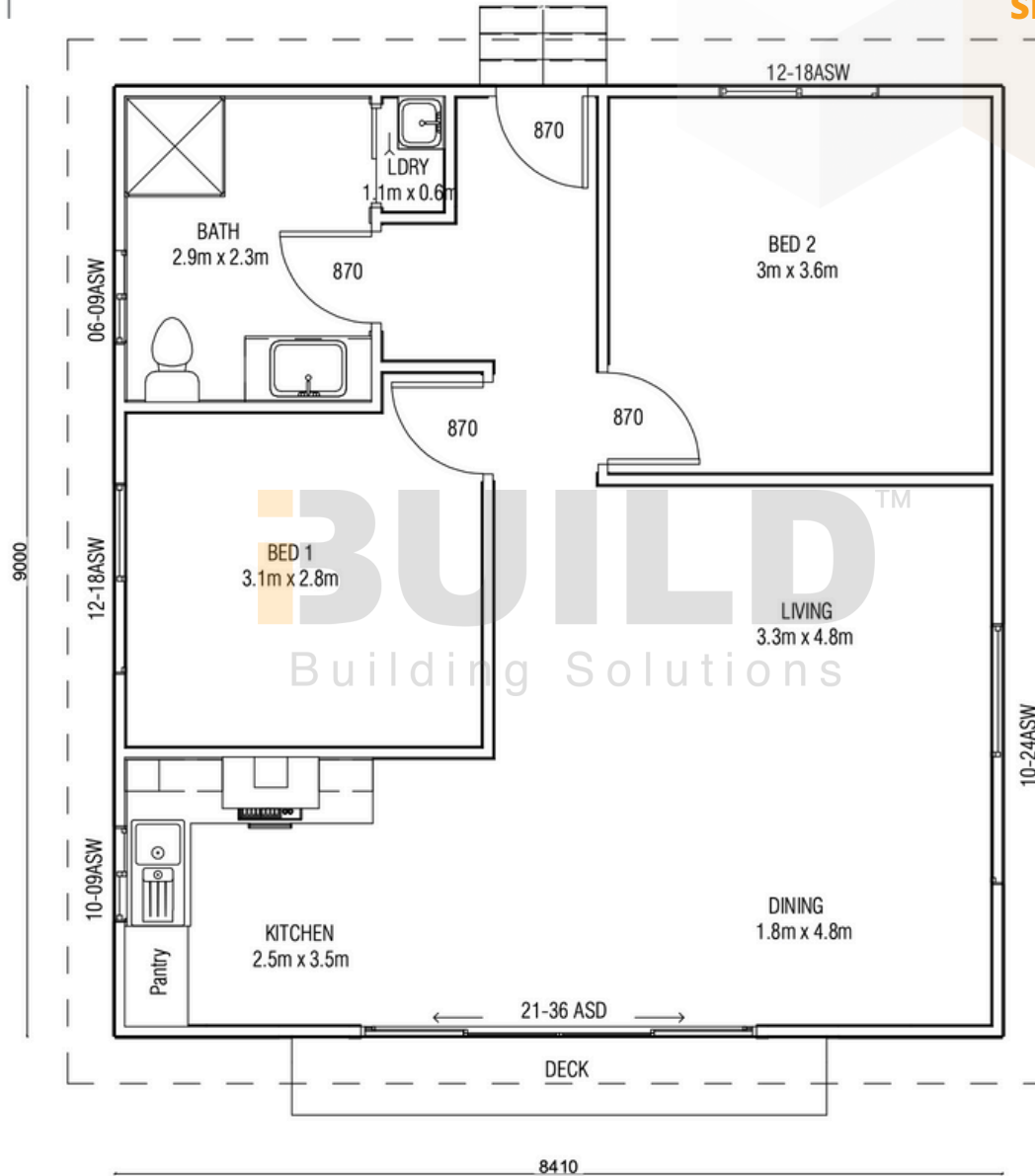
HUME BUSINESS  
AWARDS 2021

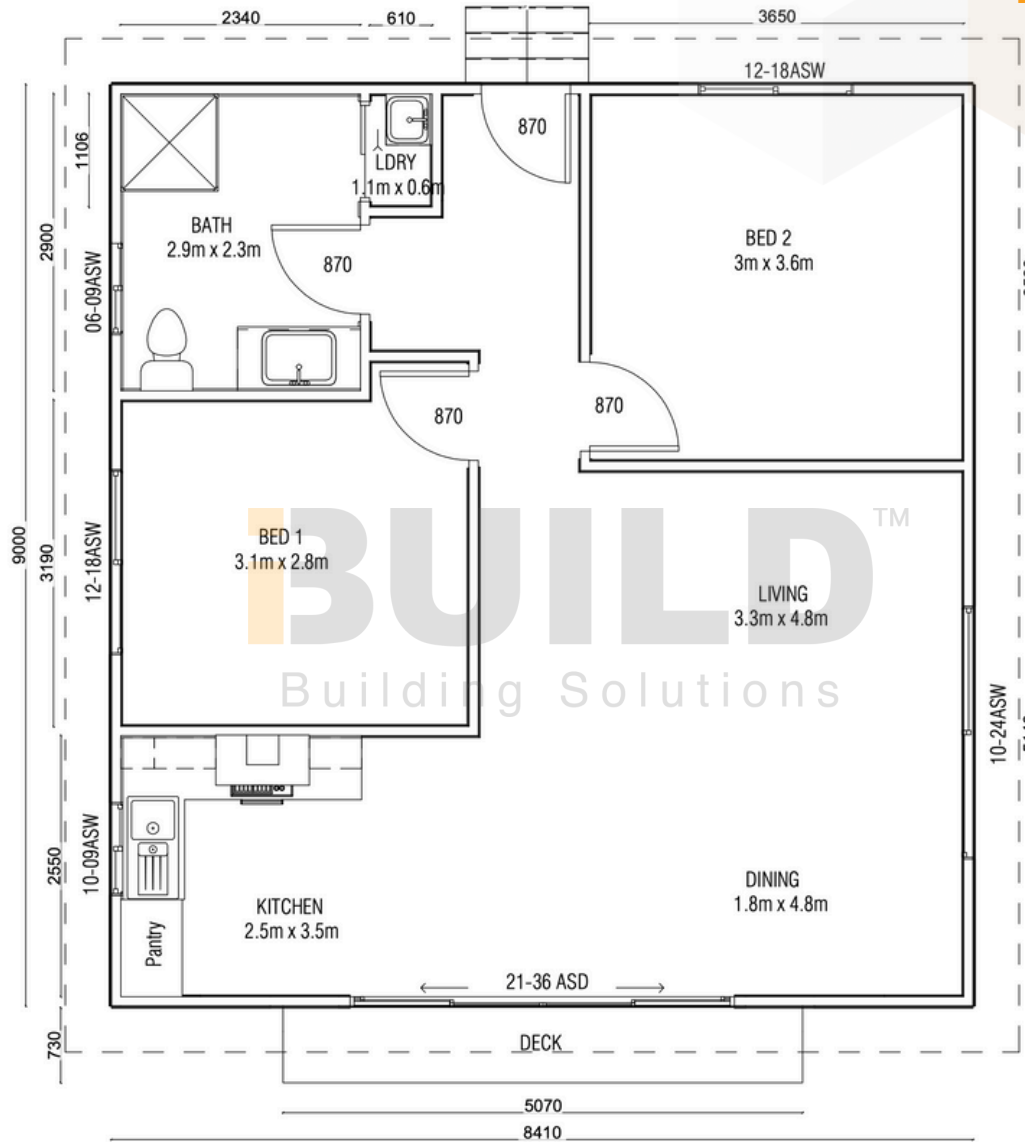
1800 679 268  
info@i-build.com.au  
www.i-build.com.au

Facebook@ibuildau  
YouTube@ibuildbuilding  
Pinterest@ibuildbuildings

Eastern Innovation  
5A Hartnett Close  
Mulgrave VIC 3170

© copyright iBuild - v9.17 20220930





**BUILD**<sup>TM</sup>  
Building Solutions



**BUILD**<sup>TM</sup>  
Building Solutions

STRONGER • SMARTER • FASTER  
**MORE AFFORDABLE**

**BUILD**  
Building Solutions

**KIT HOMES**

**EMERALD**

The Kit Homes Emerald offers a cosy, compact two-bedroom home, perfect for those looking to build a secondary dwelling on their property.

ENCLOSED	OTHER
66.50m <sup>2</sup>	11.50m <sup>2</sup>
<b>TOTAL 78.00m<sup>2</sup></b>	
2	1
	1



59<sup>TH</sup> AUSTRALIAN  
Export & Investment Awards

EXPORT  
AWARDS  
2021

HUME BUSINESS  
AWARDS 2021

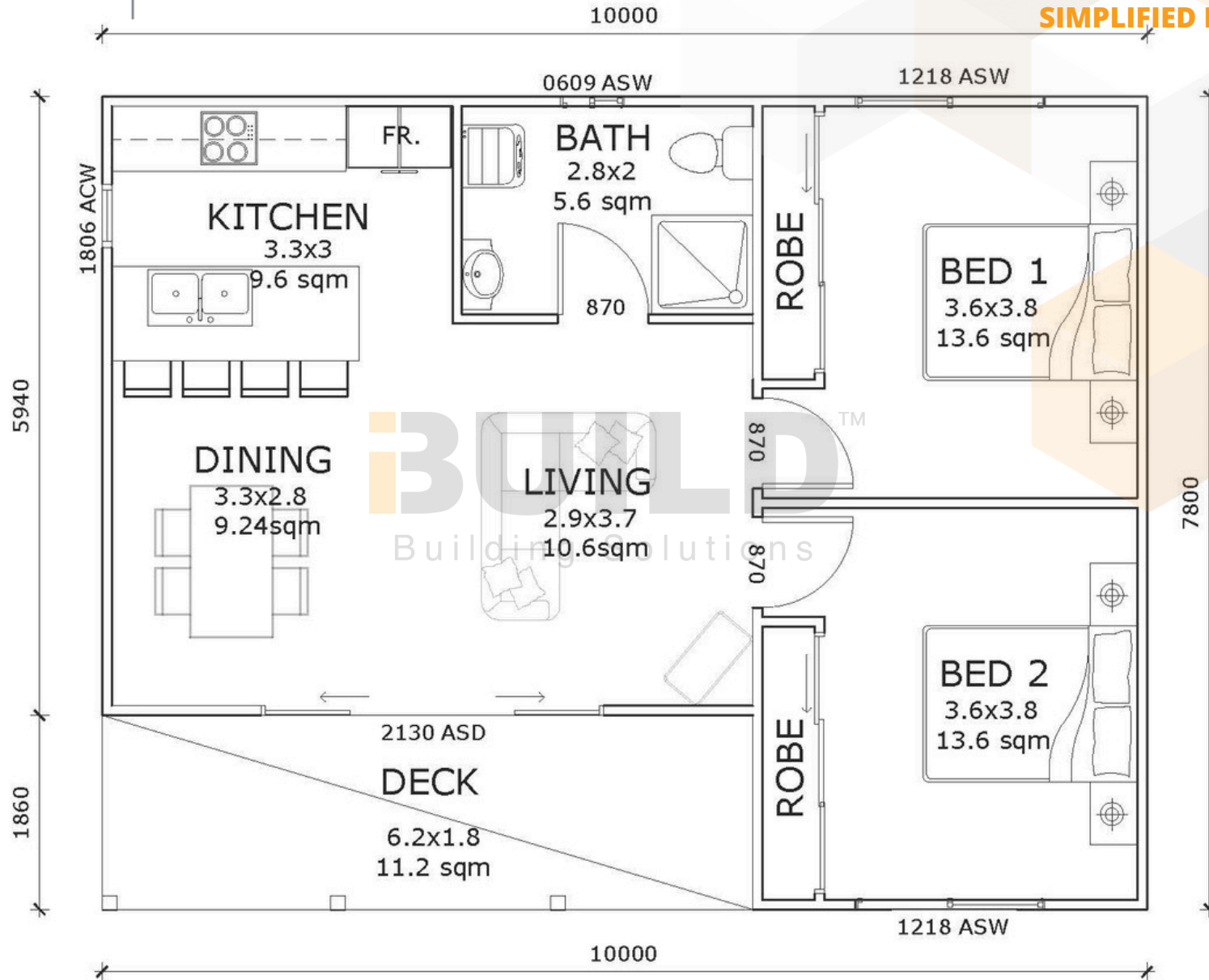
1800 679 268  
info@i-build.com.au  
www.i-build.com.au

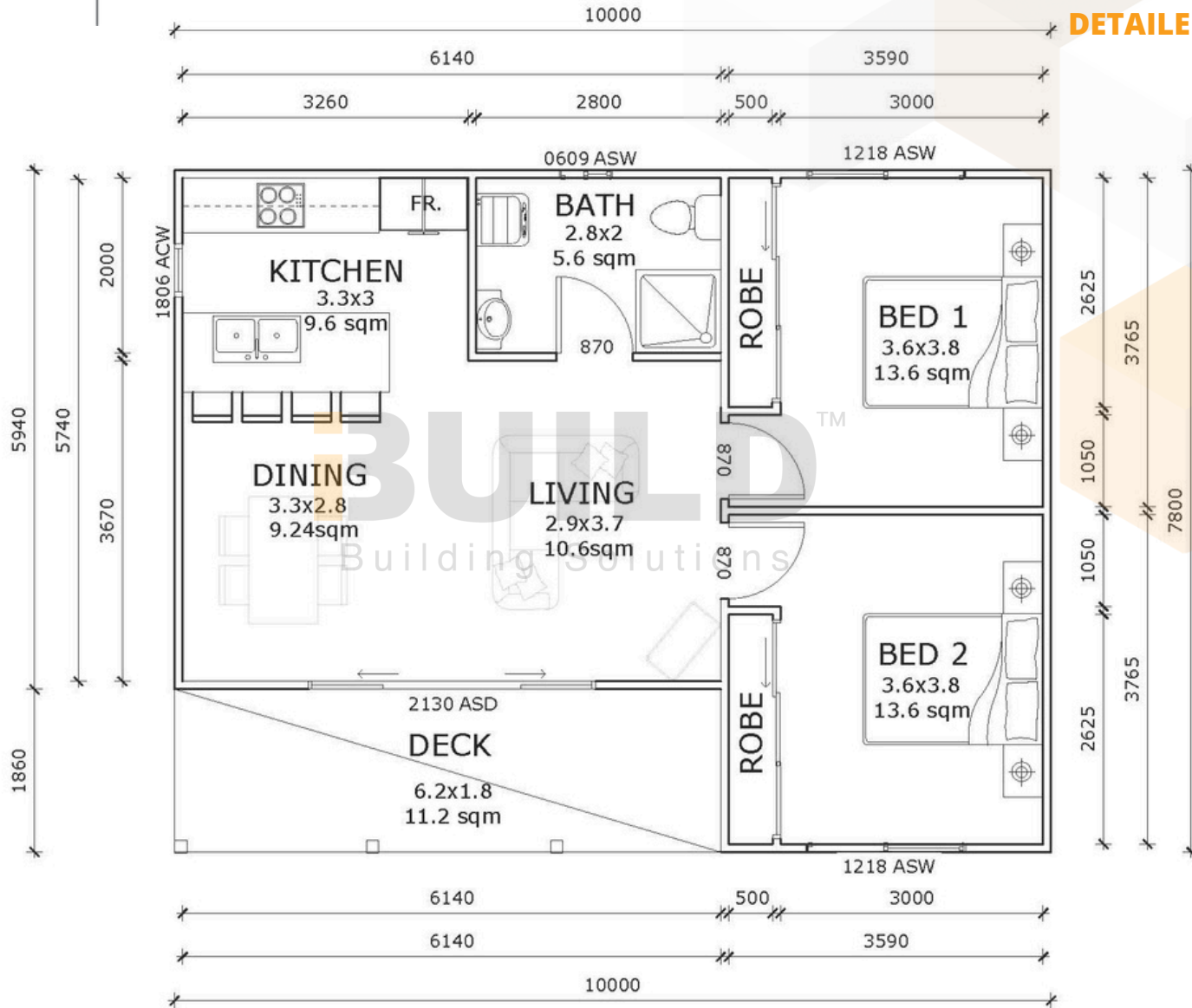
Facebook@ibuildau  
YouTube@ibuildbuilding  
Pinterest @ibuildbuildings

Eastern Innovation  
5A Hartnett Close  
Mulgrave VIC 3170

© copyright iBuild - v9.17 20220930







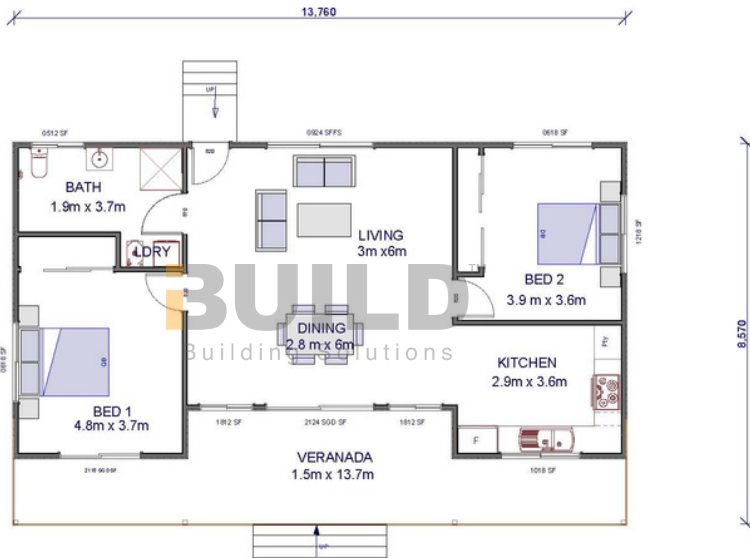




**KIT HOMES**

**MELROSE 42**

The Kit Homes Melrose 42 embodies the timeless charm of its predecessor, featuring a subtly expanded layout. Step into the inviting living space seamlessly connected to a spacious deck and alfresco zone, ideal for outdoor living and entertainment.



ENCLOSED	OTHER
91.92m <sup>2</sup>	27.78m <sup>2</sup>
<b>TOTAL 119.70m<sup>2</sup></b>	
2	1
	1

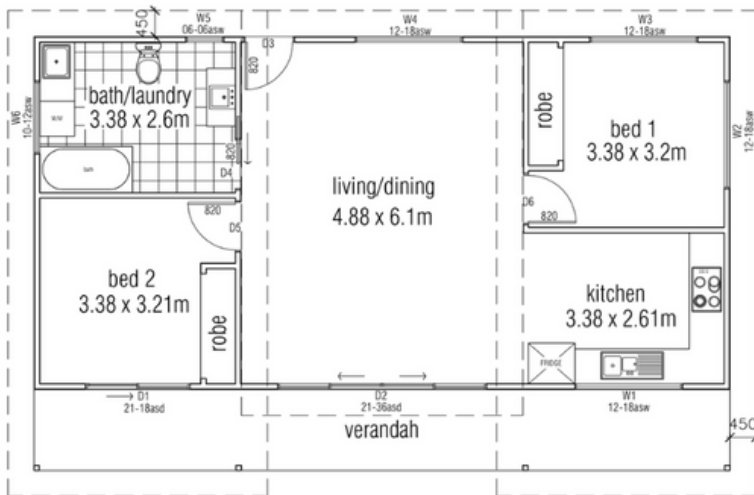
For a larger view of our floor plans, please check our website.



**KIT HOMES**

# Melrose 44

The Kit Homes Melrose 44 is open living at its finest. This two-bedroom Kit home has everything you're looking for, with a spacious living and dining area. Whether you're looking to build a home for your retirement or a place to vacation, the Kit Homes Melrose 44 is perfect.



ENCLOSED	OTHER	
<b>73.74m<sup>2</sup></b>	<b>16.78m<sup>2</sup></b>	
<b>TOTAL 90.52m<sup>2</sup></b>		
2	1	1




For a larger view of our floor plans, please check our website.



## KIT HOMES

# MOREE

The Kit Homes Moree comes complete with a bathroom, two cosy bedrooms, an inviting open-concept living and dining space, and a charming verandah that creates an ideal space to relax and enjoy your home with your loved ones.

ENCLOSED	OTHER
96.0m <sup>2</sup>	33.5m <sup>2</sup>
<b>TOTAL 129.5m<sup>2</sup></b>	
 2  1  1	

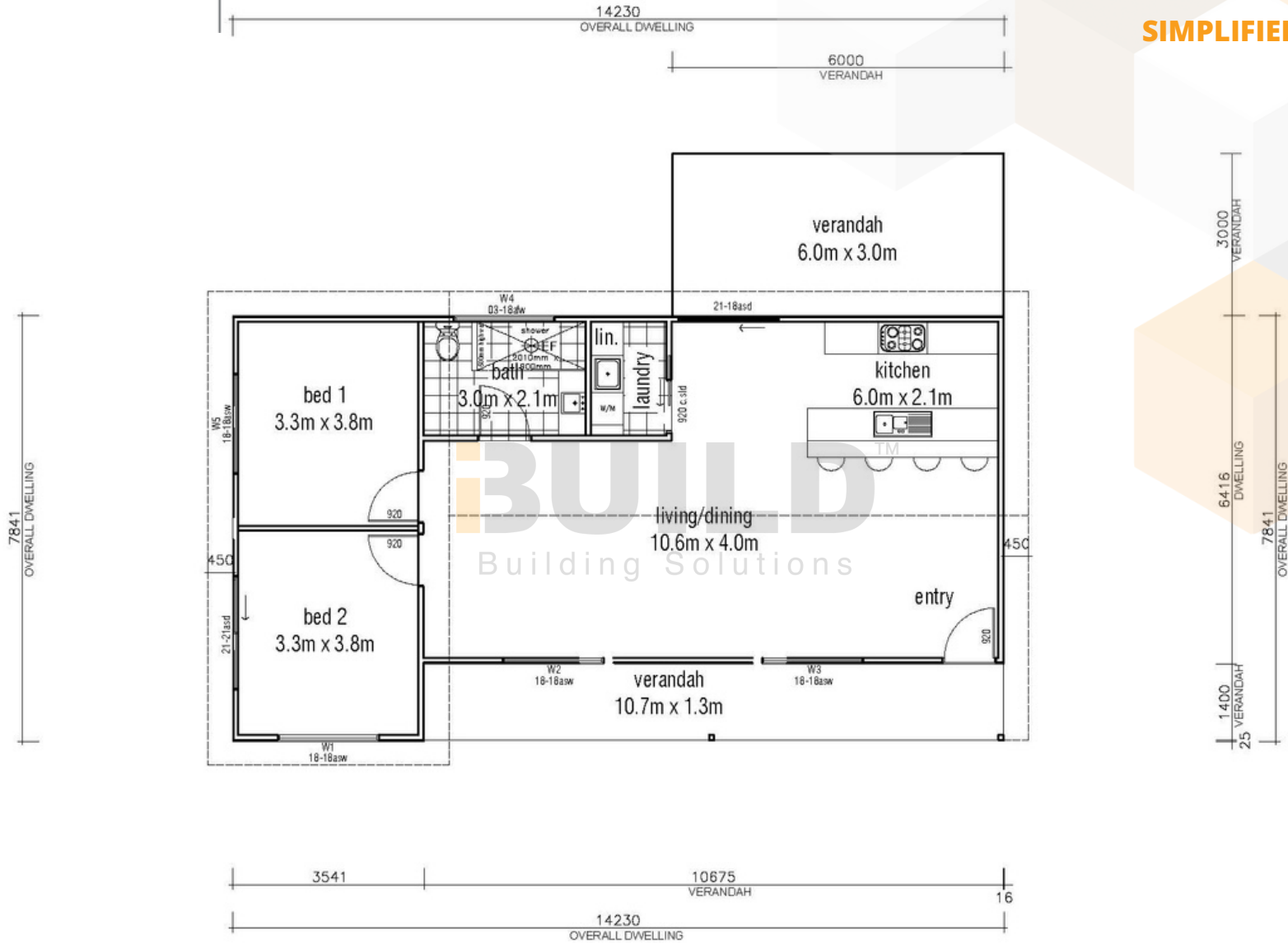


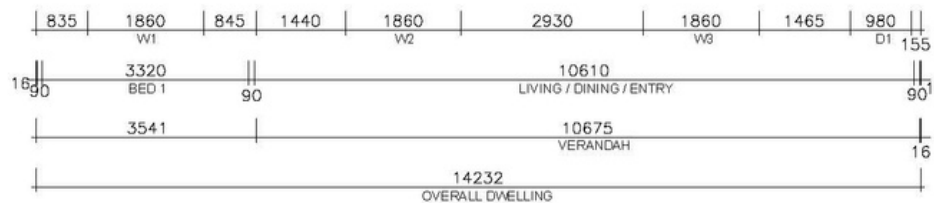
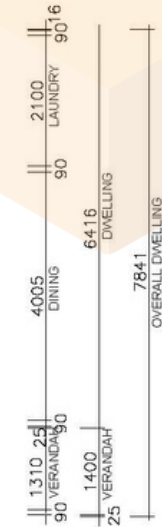
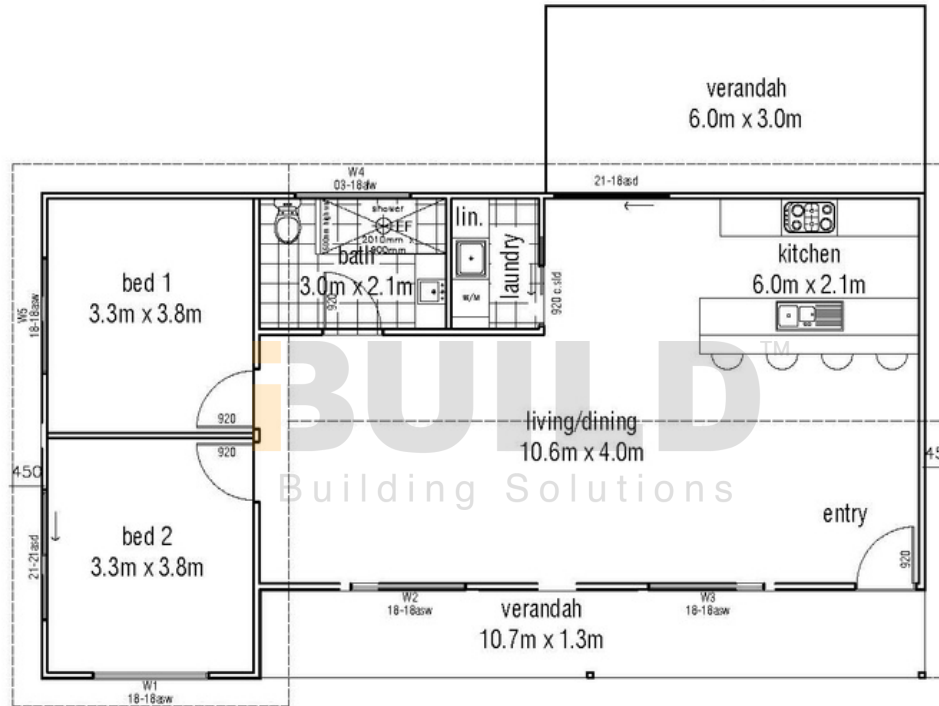
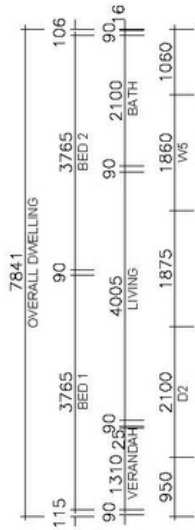
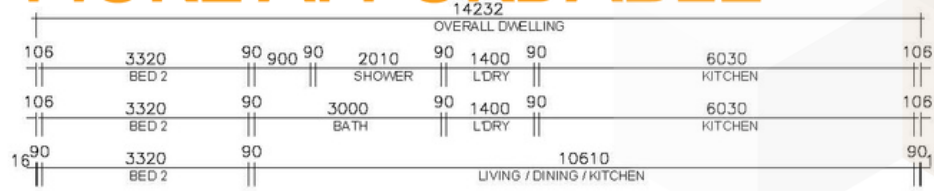
1800 679 268  
 info@i-build.com.au  
 www.i-build.com.au

[Facebook@ibuildau](#)  
[YouTube@ibuildbuilding](#)  
[Pinterest @ibuildbuildings](#)

Eastern Innovation  
 5A Hartnett Close  
 Mulgrave VIC 3170

© copyright iBuild - v9.17 20220930











**iBUILD™**  
Building Solutions

STRONGER • SMARTER • FASTER  
**MORE AFFORDABLE**

**iBUILD™**  
Building Solutions

## KIT HOMES

# MUDGEE

Perfect for singles or young couples, our compact Kit Homes Mudgee features a master bedroom and a small guest room. It boasts a spacious verandah, ideal for enjoying the sunset. Mudgee offers the perfect balance of privacy and socialising.

ENCLOSED	OTHER
58.80m <sup>2</sup>	17.9m <sup>2</sup>
<b>TOTAL 76.70m<sup>2</sup></b>	
2	1
	1

59<sup>TH</sup> AUSTRALIAN  
Export & Investment Awards

INTERNATIONAL EXPORT  
AWARDS  
2021

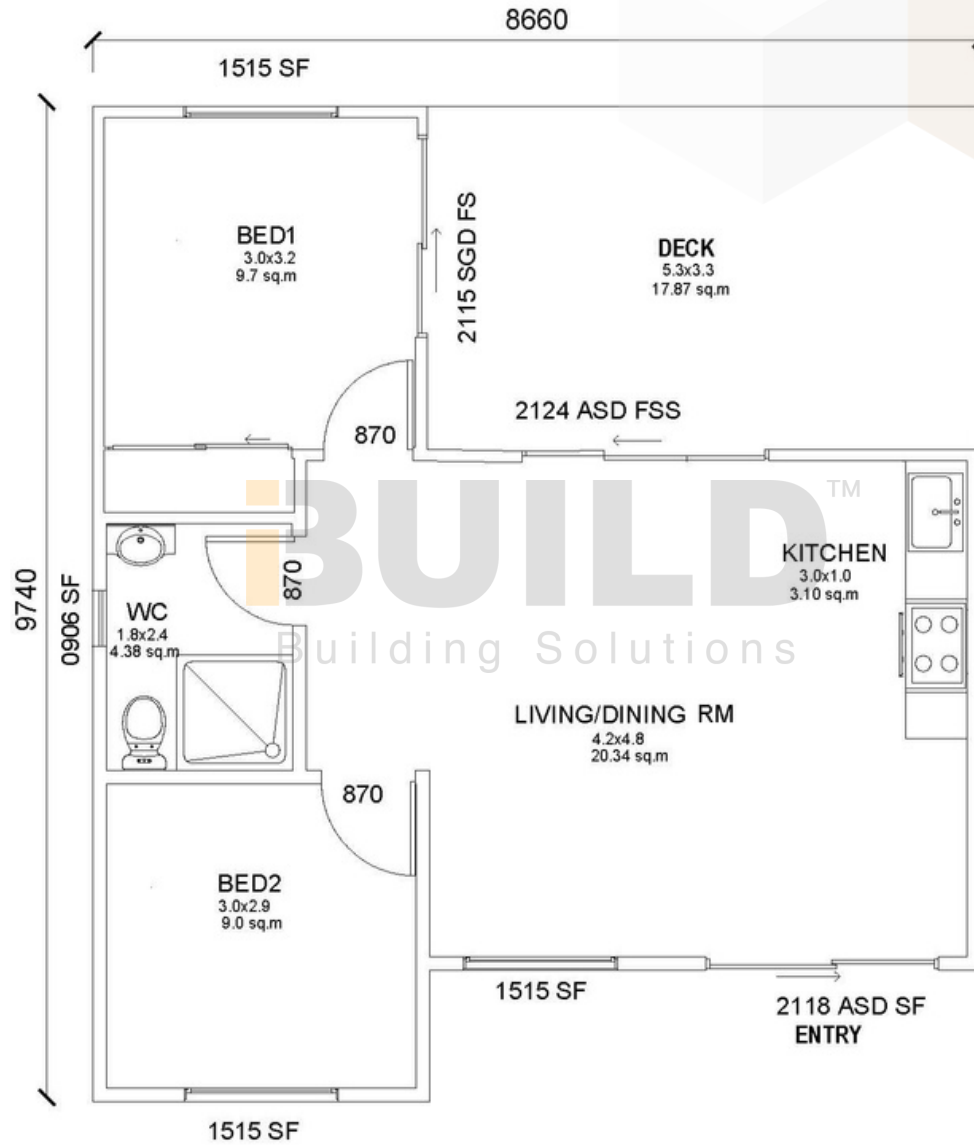
1800 679 268  
info@i-build.com.au  
www.i-build.com.au

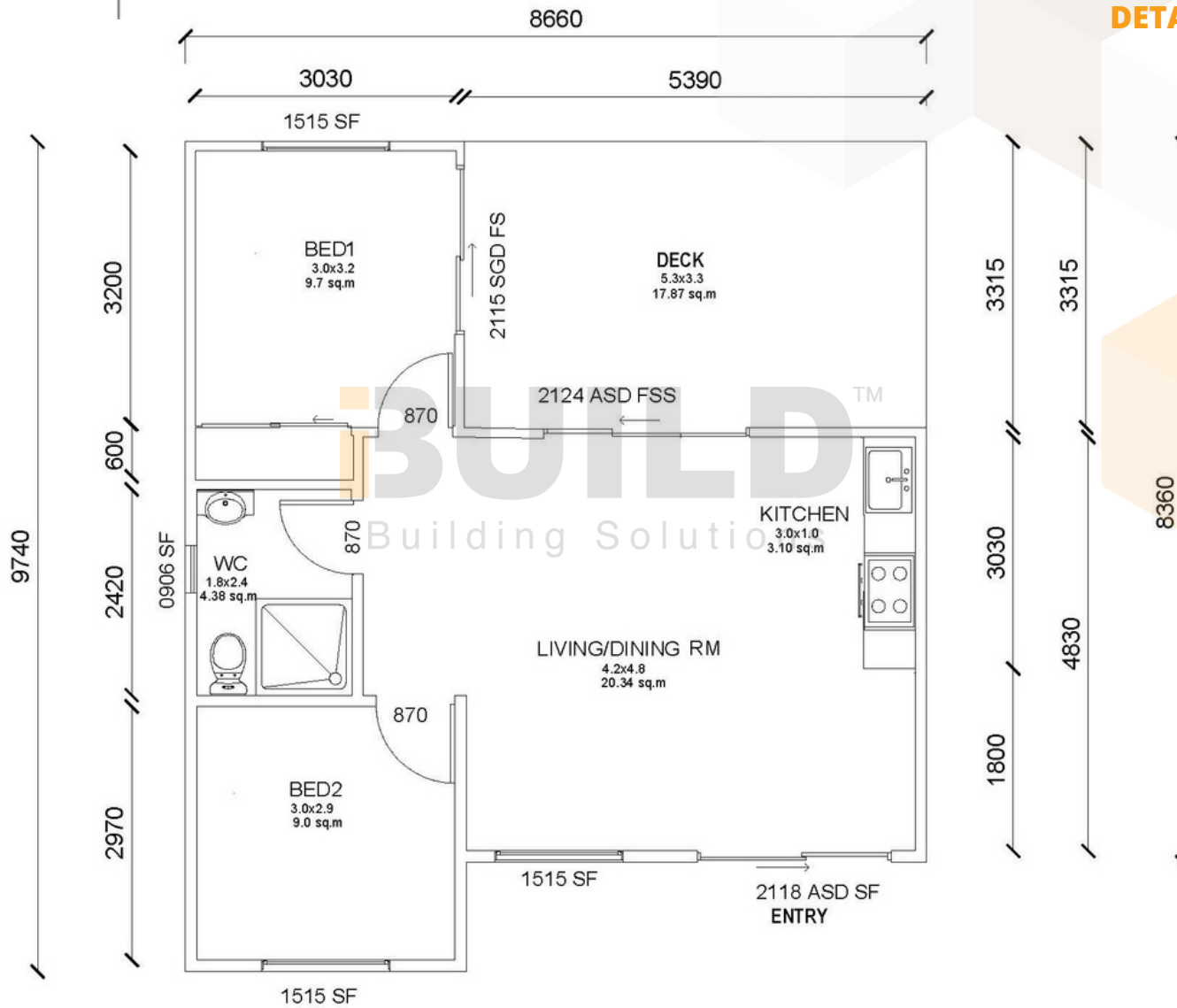
Facebook@ibuildau  
YouTube@ibuildbuilding  
Pinterest@ibuildbuildings

Eastern Innovation  
5A Hartnett Close  
Mulgrave VIC 3170

© copyright iBuild - v9.17 20220930









**iBUILD**<sup>TM</sup>  
Building Solutions



**iBUILD™**  
Building Solutions

STRONGER • SMARTER • FASTER  
**MORE AFFORDABLE**

**iBUILD™**  
Building Solutions

## KIT HOMES PARRAMATTA

The Granny Flat Parramatta comes packed with everything you need in a granny flat. Its simple design is complemented by a front deck, allowing you to enjoy everything your property has to offer, and making it the ideal choice for a granny flat.

ENCLOSED	OTHER
60.00m <sup>2</sup>	8.37m <sup>2</sup>
<b>TOTAL 68.37m<sup>2</sup></b>	
2	1
	1



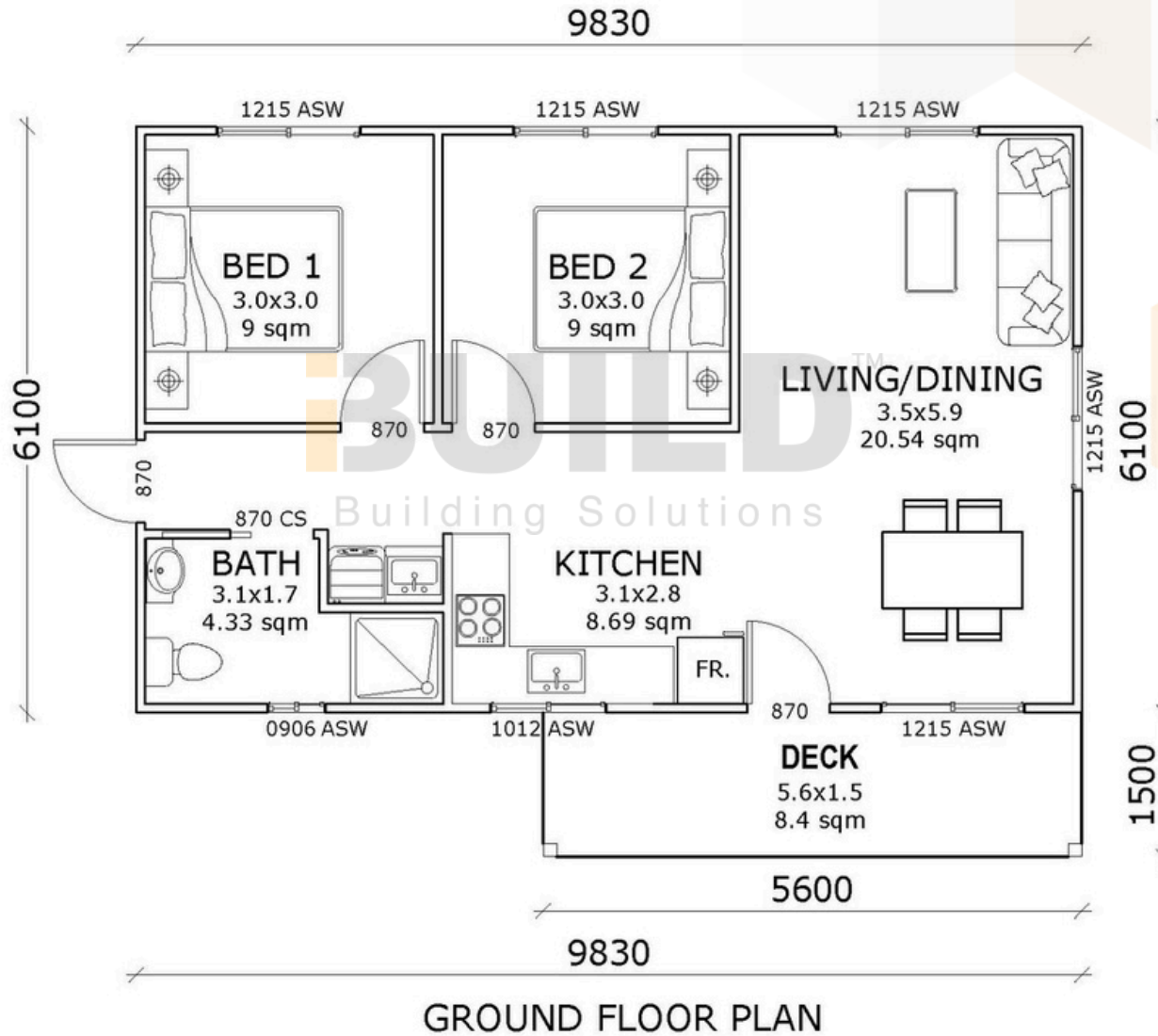
59<sup>TH</sup> AUSTRALIAN  
Export & Investment Awards

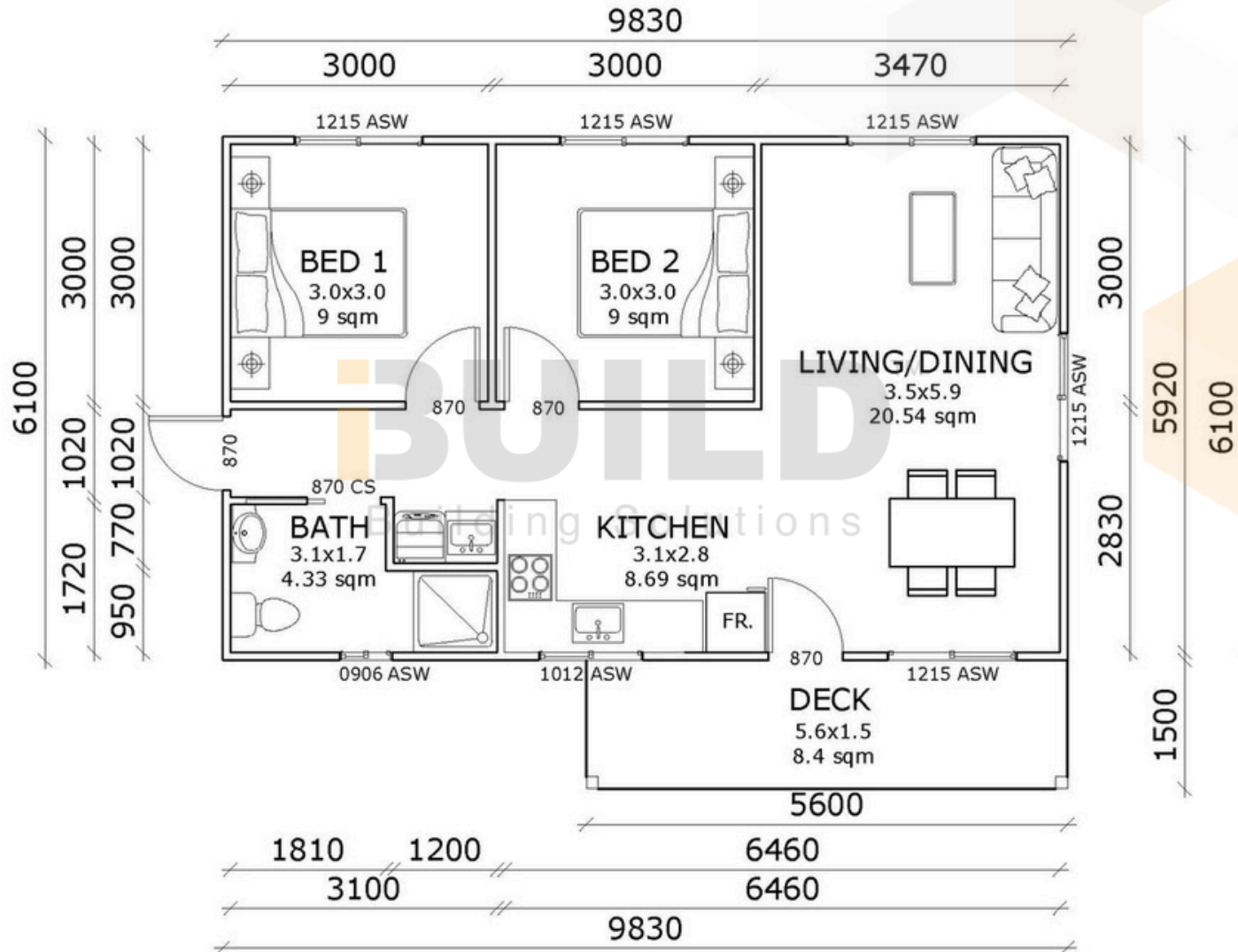


1800 679 268  
info@i-build.com.au  
www.i-build.com.au

Facebook@ibuildau  
YouTube@ibuildbuilding  
Pinterest @ibuildbuildings

Eastern Innovation  
5A Hartnett Close  
Mulgrave VIC 3170  
© copyright iBuild - v9.17  
20220930





GROUND FLOOR PLAN





**BUILD**<sup>TM</sup>  
Building Solutions



**BUILD**  
Building Solutions

**BUILD**™  
Building Solutions

STRONGER • SMARTER • FASTER  
**MORE AFFORDABLE**

**KIT HOMES**

**PORTLAND**

If you're looking for neat and compact cabins, the Portland is for you. Ideal as a fishing lodge, art studio, holiday cabin or a parent retreat, the Portland will catch the breezes and show you amazing views.

ENCLOSED	OTHER
44.67m <sup>2</sup>	9.11m <sup>2</sup>
<b>TOTAL 53.78m<sup>2</sup></b>	
2	1  1

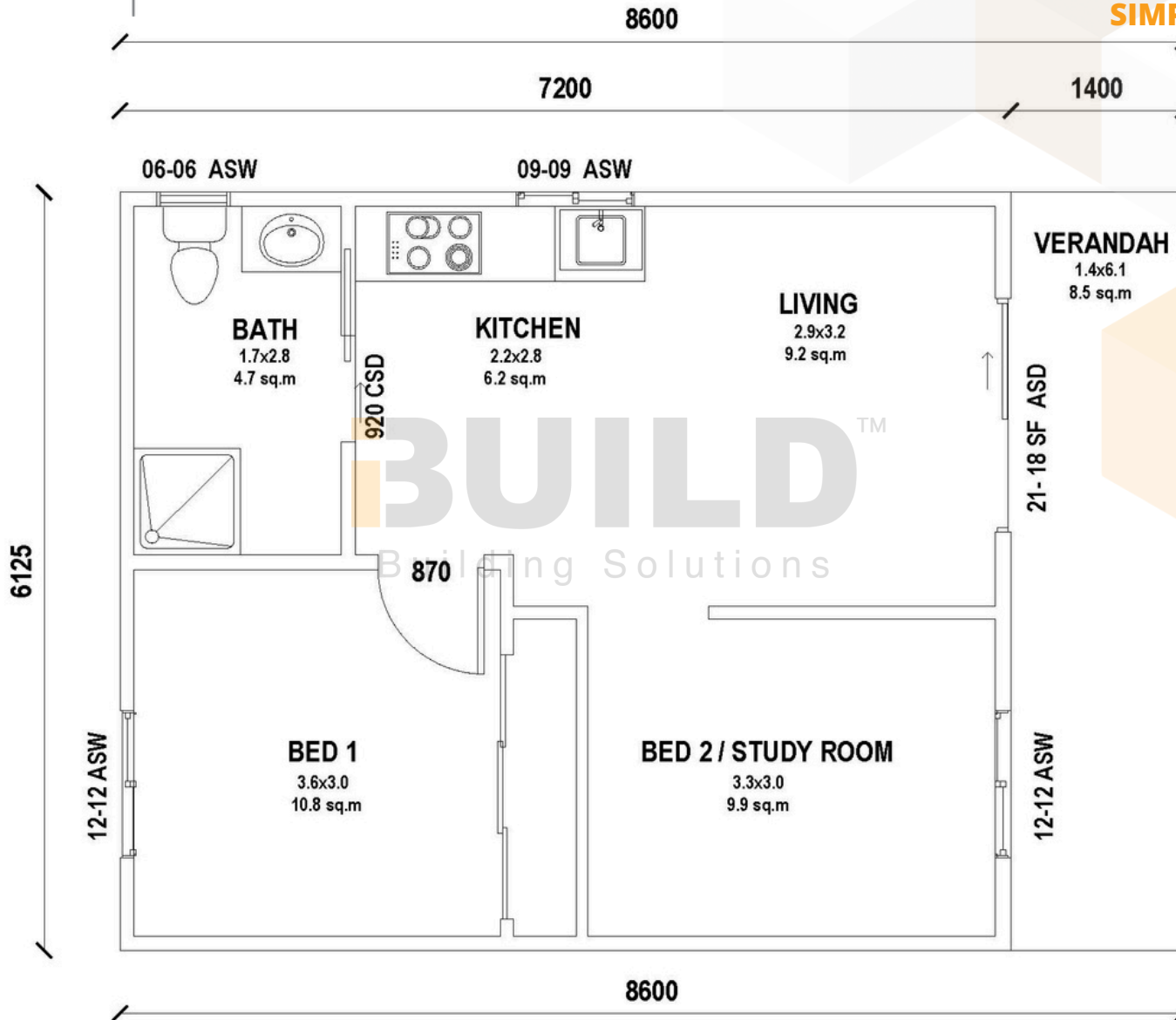


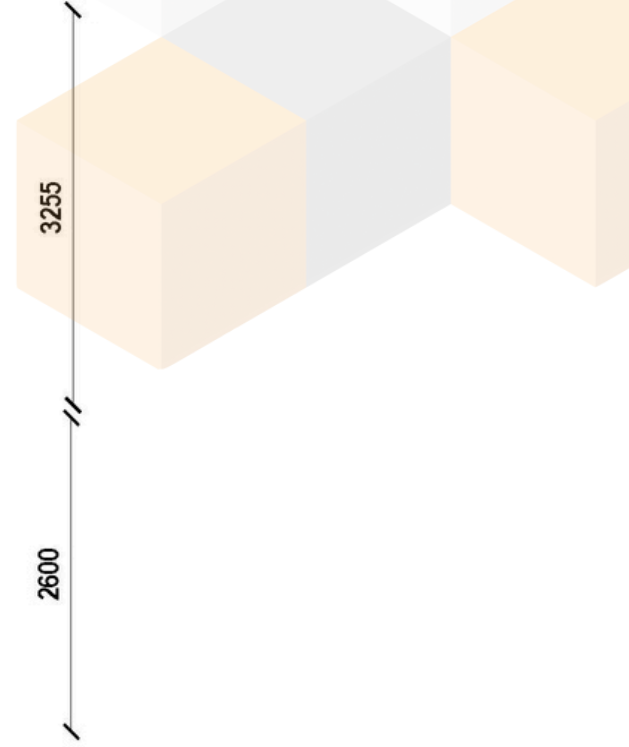
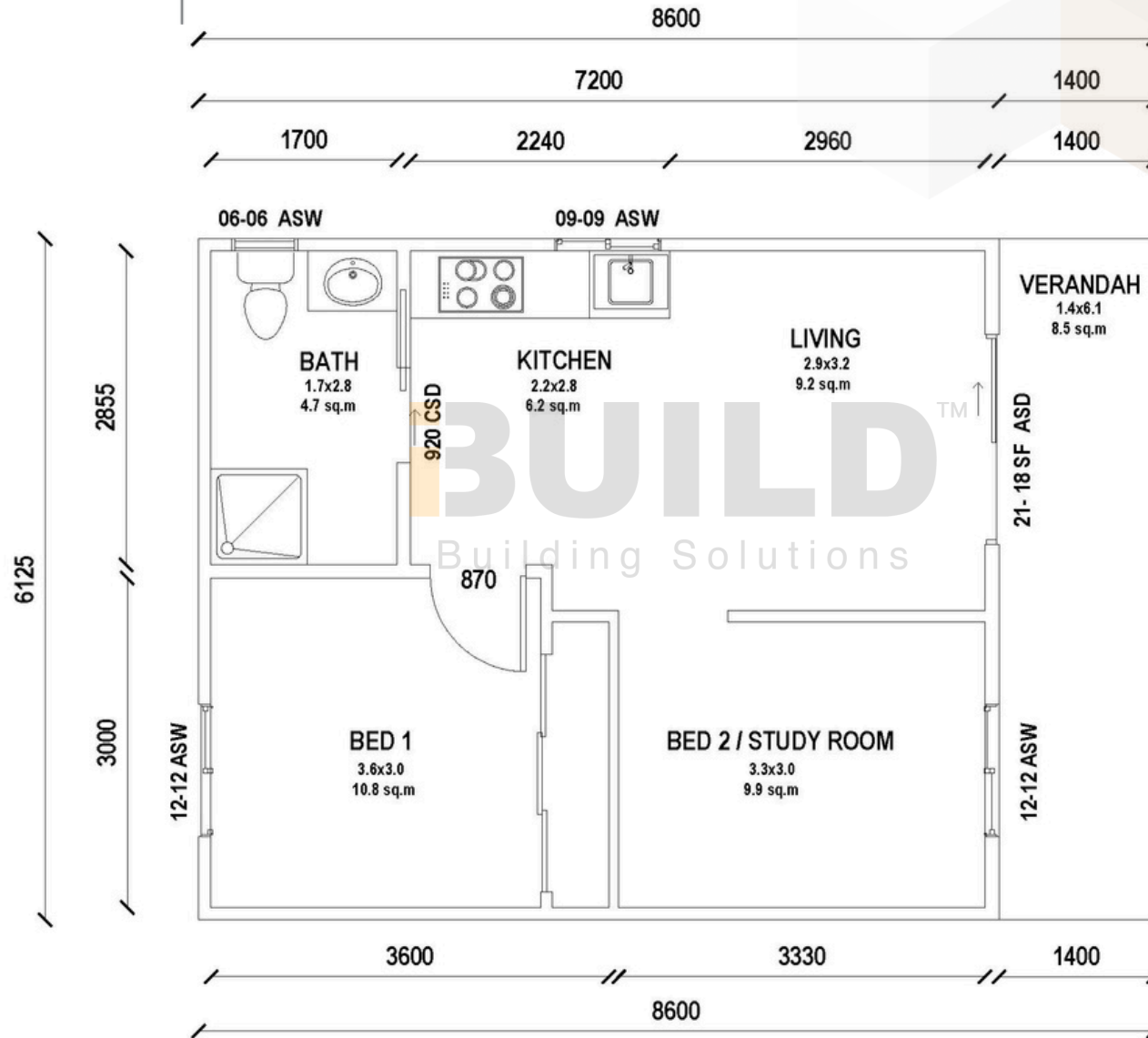
1800 679 268  
info@i-build.com.au  
www.i-build.com.au

Facebook@ibuildau  
YouTube@ibuildbuilding  
Pinterest@ibuildbuildings

Eastern Innovation  
5A Hartnett Close  
Mulgrave VIC 3170

© copyright iBuild - v9.17 20220930

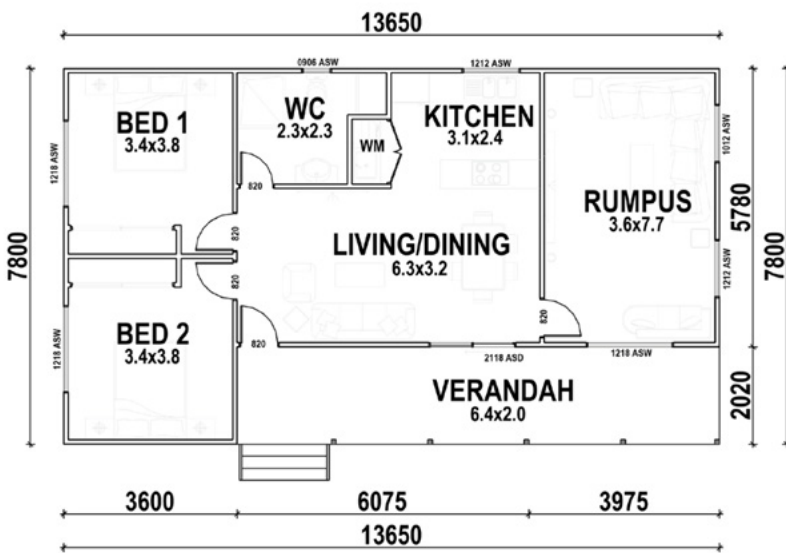




**BUILD**<sup>TM</sup>  
Building Solutions



**BUILD**<sup>TM</sup>  
Building Solutions



**KIT HOMES**

**ROMA**

The contemporary design with an open floor plan highlights a neat verandah shading the living area. The Roma would perfectly suit those looking for a Granny flat or something similar.

ENCLOSED	OTHER
86.17m <sup>2</sup>	20.30m <sup>2</sup>
<b>TOTAL 106.47m<sup>2</sup></b>	
2	1  1

For a larger view of our floor plans, please check our website.

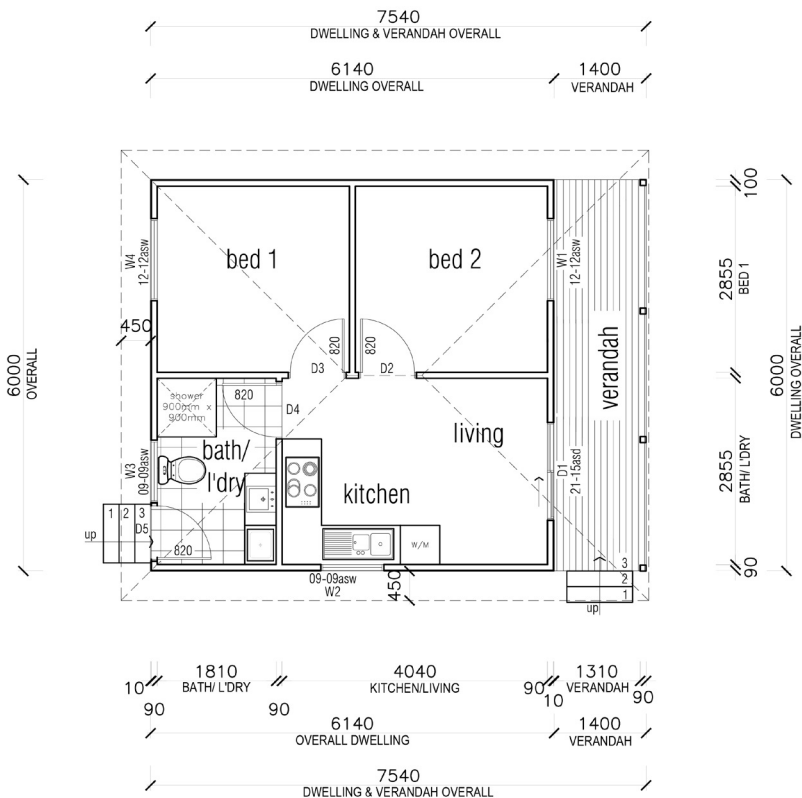


**iBUILD**<sup>TM</sup>  
Building Solutions

**KIT HOMES**

# HORSHAM

With two bedrooms and an open style kitchen and living area, comfort and simplistic style resonates throughout the Kit Homes Horsham.



ENCLOSED	OTHER
36.84m <sup>2</sup>	8.40m <sup>2</sup>
<b>TOTAL 45.24m<sup>2</sup></b>	
2	1
1	

For a larger view of our floor plans, please check our website.






**BUILD**<sup>TM</sup>  
Building Solutions

STRONGER • SMARTER • FASTER  
**MORE AFFORDABLE**

**BUILD**<sup>TM</sup>  
Building Solutions

## KIT HOMES SALE

Kit Homes Sale offers endless possibilities for those seeking to create their own unique sanctuary. Boasting two bedrooms and one bathroom, this cozy abode is a perfect canvas awaiting your personal touch.

ENCLOSED	OTHER
73.60m <sup>2</sup>	3.46m <sup>2</sup>
<b>TOTAL 77.10m<sup>2</sup></b>	
 2	 1
	 1



59<sup>TH</sup> AUSTRALIAN  
Export & Investment Awards

INTERNATIONAL  
EXPORT  
AWARDS  
2021

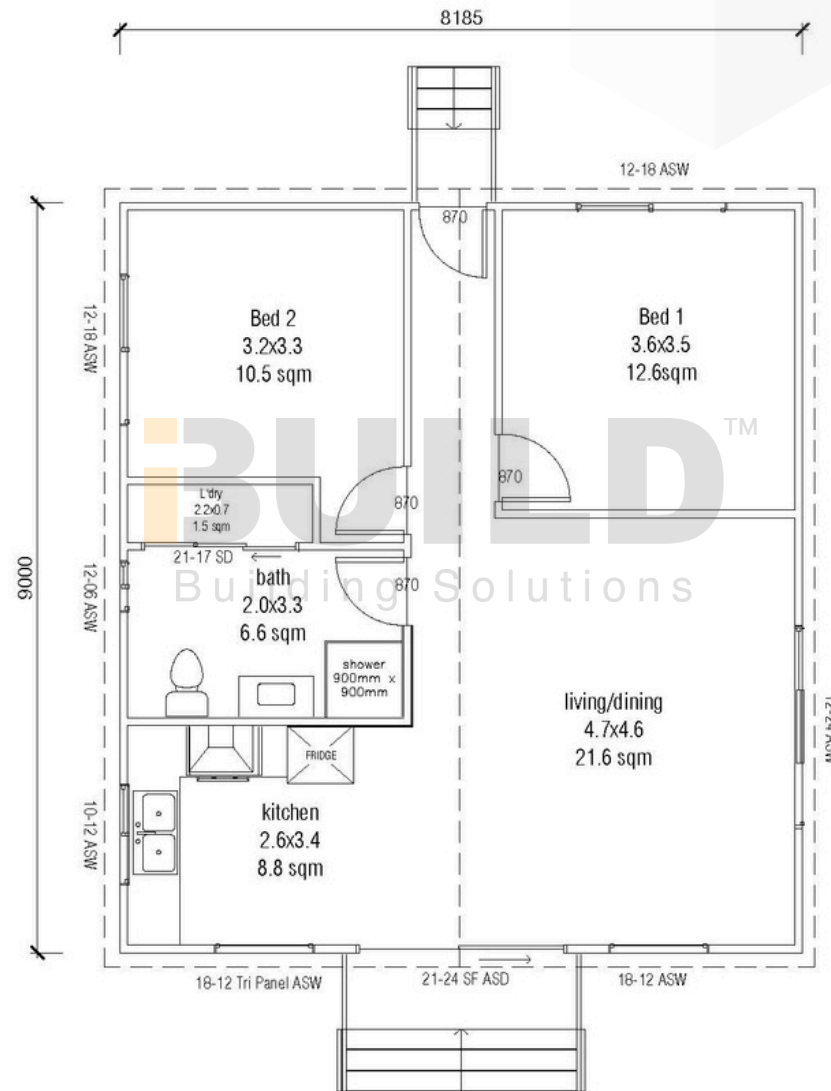
1800 679 268  
info@i-build.com.au  
www.i-build.com.au

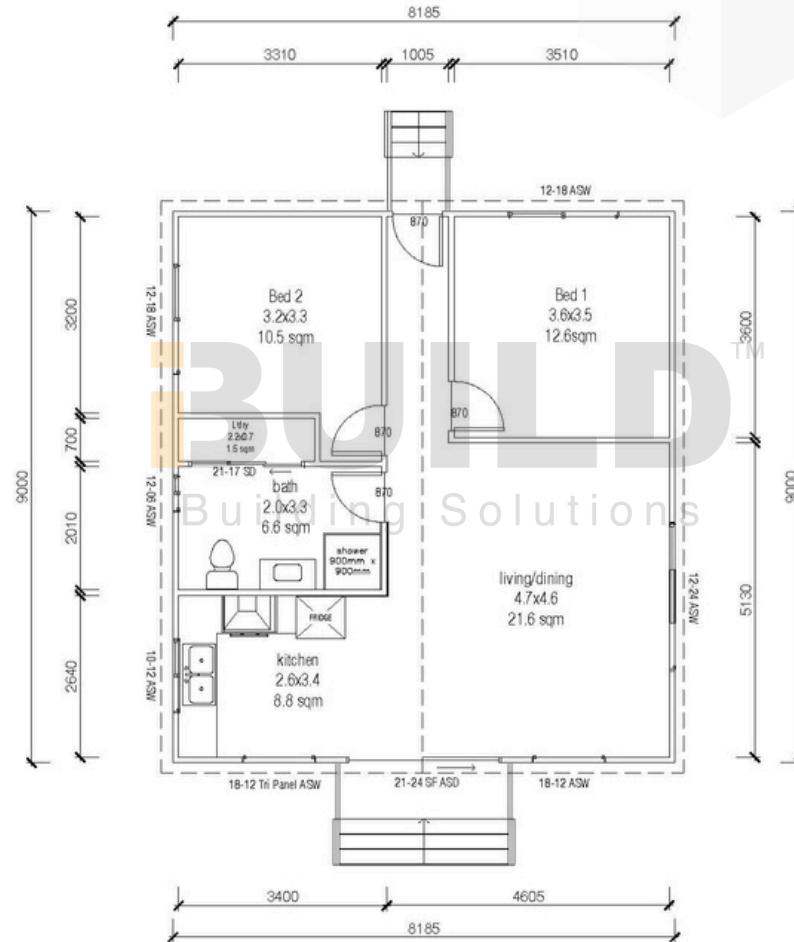
Facebook@ibuildau  
YouTube@ibuildbuilding  
Pinterest@ibuildbuildings

Eastern Innovation  
5A Hartnett Close  
Mulgrave VIC 3170

© copyright iBuild - v9.17 20220930









**BUILD**<sup>TM</sup>  
Building Solutions



**iBUILD**<sup>TM</sup>  
Building Solutions

STRONGER • SMARTER • FASTER  
**MORE AFFORDABLE**

**iBUILD**<sup>TM</sup>  
Building Solutions

**KIT HOMES**

# SEYMOUR

Kit Homes Seymour is a charming two-bedroom kit home design that offers modern functionality and a comfortable living space. This kit home is perfect for those who want to downsize or for first-time homeowners who are looking for an affordable, low- maintenance living option.

ENCLOSED	OTHER
59.95m <sup>2</sup>	19.8m <sup>2</sup>
<b>TOTAL 79.75m<sup>2</sup></b>	
2	1
	1



59<sup>TH</sup> AUSTRALIAN  
Export & Investment Awards

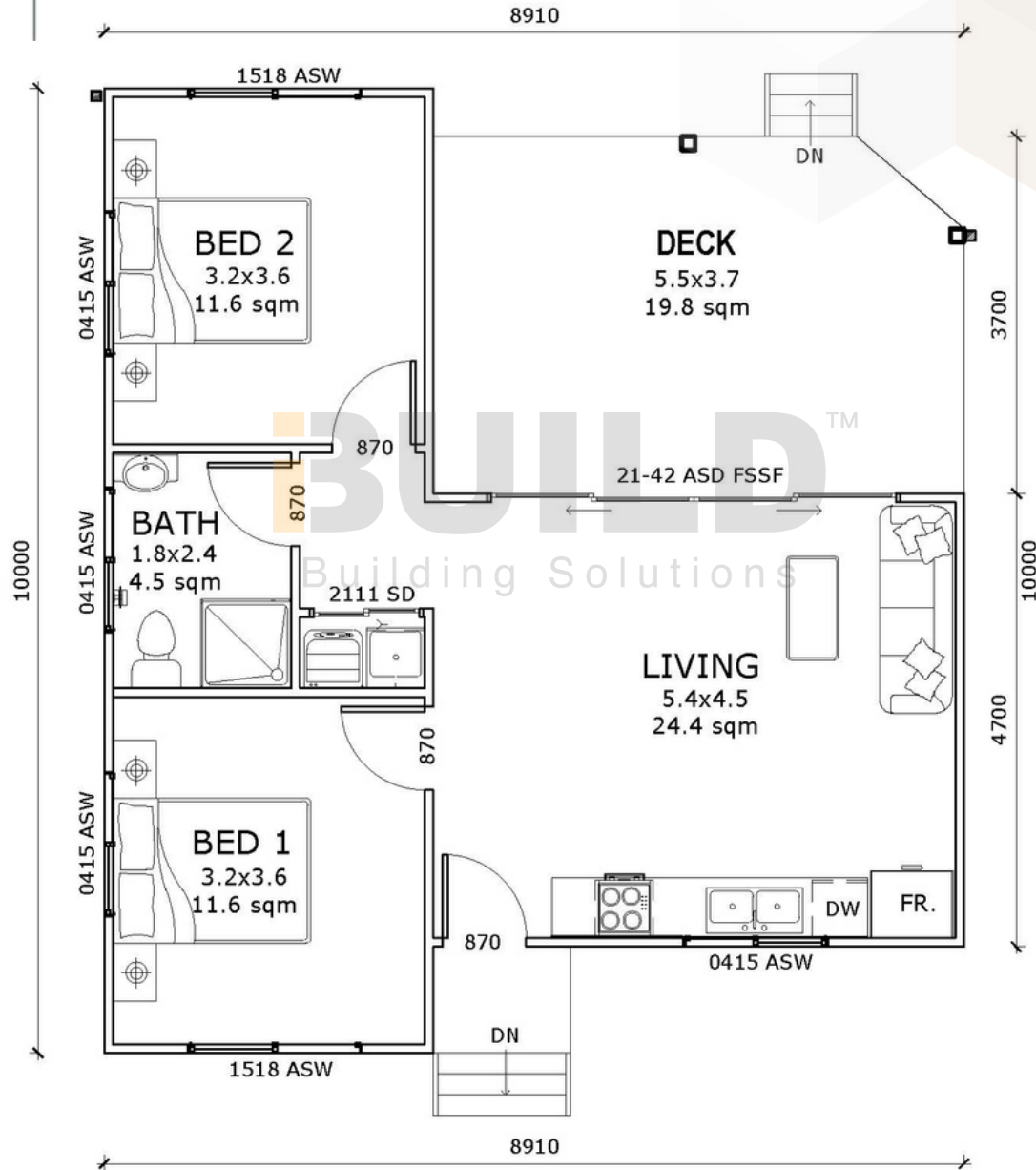
INTERNATIONAL EXPORT  
AWARDS  
2021

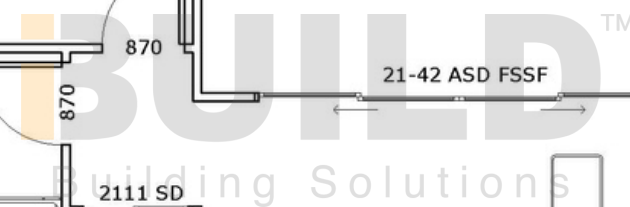
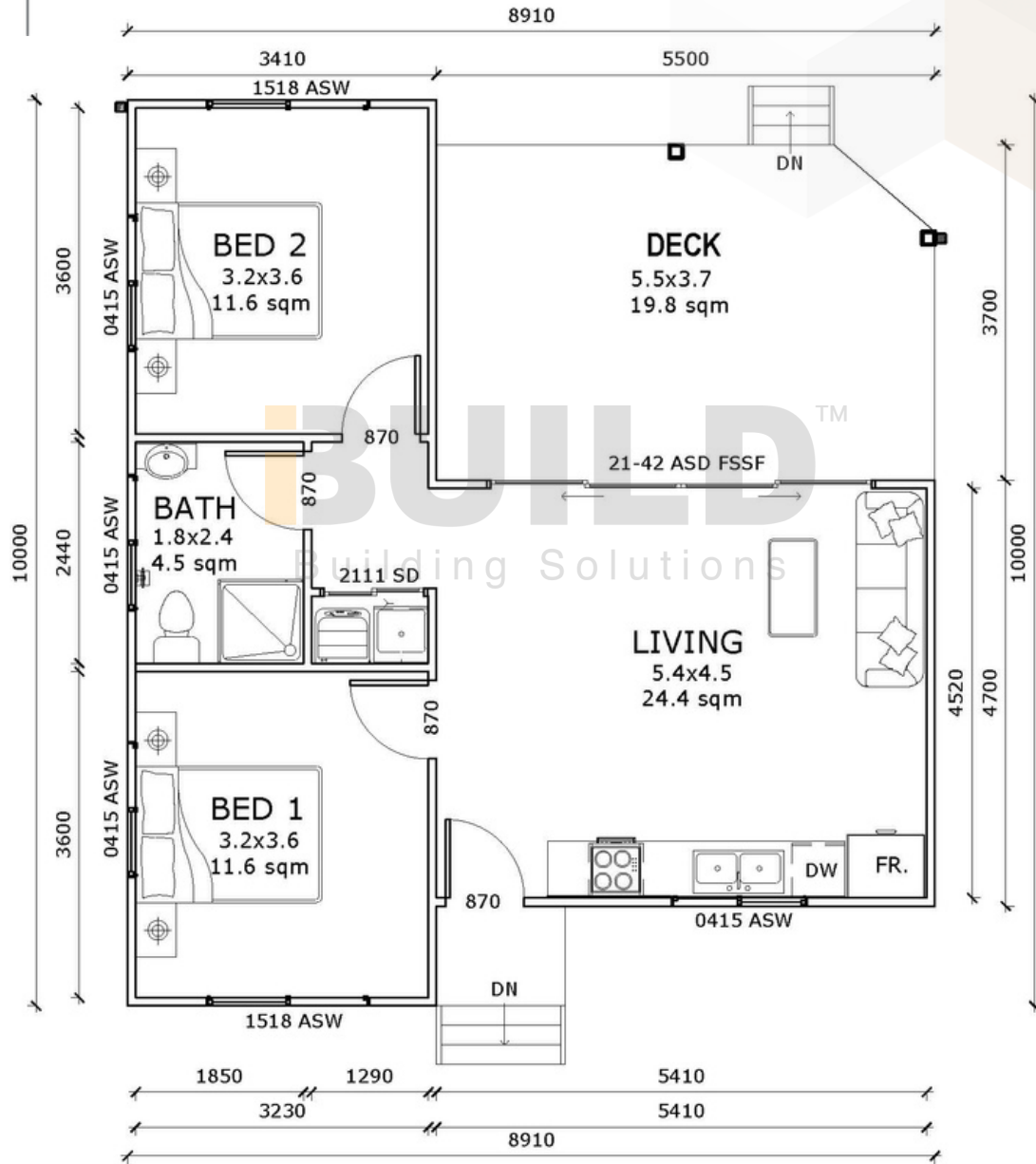
1800 679 268  
info@i-build.com.au  
www.i-build.com.au

Facebook@ibuildau  
YouTube@ibuildbuilding  
Pinterest@ibuildbuildings

Eastern Innovation  
5A Hartnett Close  
Mulgrave VIC 3170

© copyright iBuild - v9.17 20220930









**BUILD**<sup>TM</sup>  
Building Solutions

**BUILD**<sup>TM</sup>  
Building Solutions

STRONGER • SMARTER • FASTER  
**MORE AFFORDABLE**

**KIT HOMES**

**WESTWOOD**

Let the Westwood become your sanctuary. Beautifully balanced with an all-encompassing verandah, the Westwood is everything you need in a modern home.

ENCLOSED	OTHER
87.2m <sup>2</sup>	95.3m <sup>2</sup>
<b>TOTAL 182.5m<sup>2</sup></b>	
2	2
	1



59<sup>TH</sup> AUSTRALIAN  
Export & Investment Awards

EXPORT  
AWARDS  
2021

1800 679 268  
info@i-build.com.au  
www.i-build.com.au

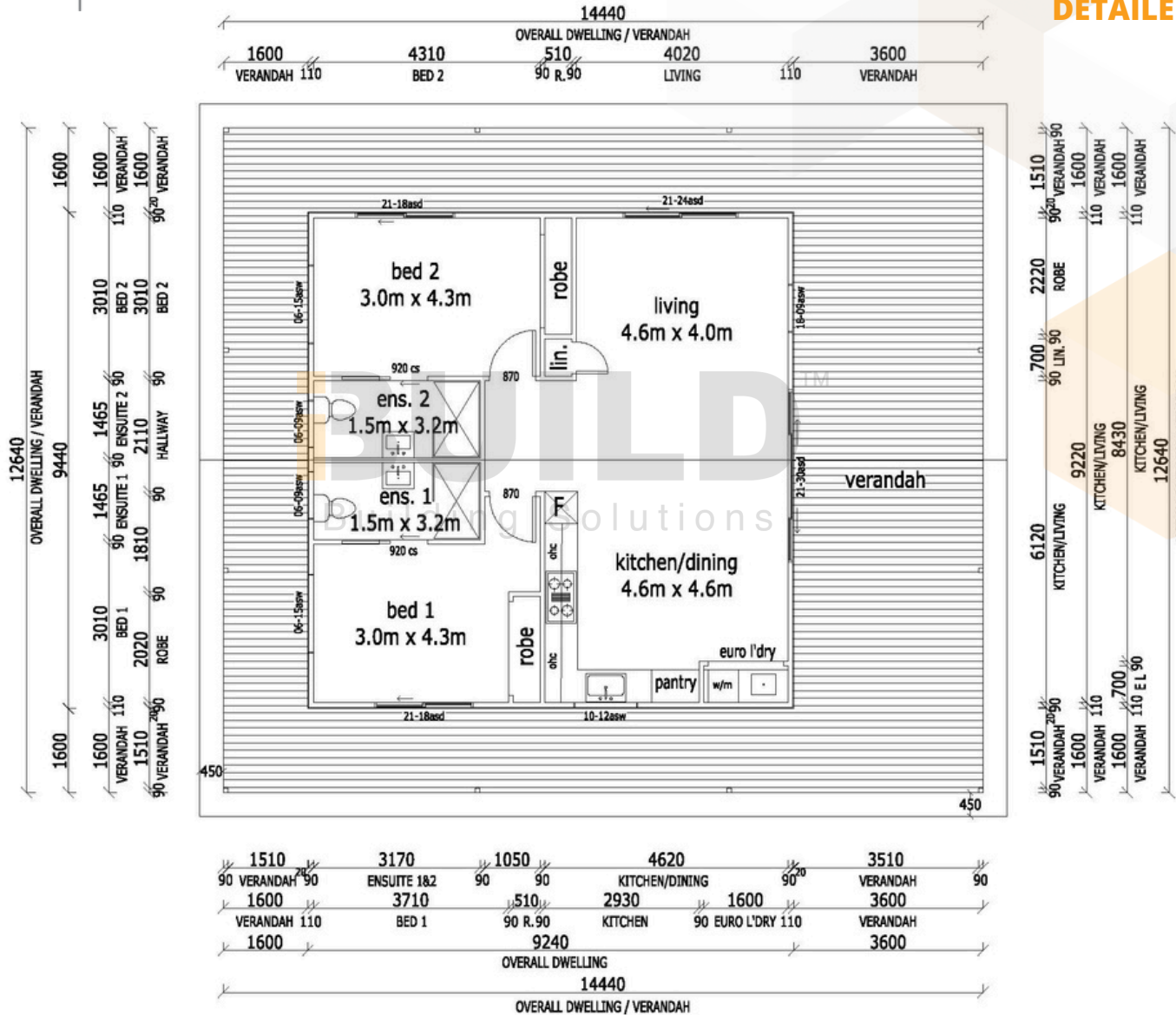
Facebook@ibuildau  
YouTube@ibuildbuilding  
Pinterest @ibuildbuildings

Eastern Innovation  
5A Hartnett Close  
Mulgrave VIC 3170

© copyright iBuild - v9.17 20220930









**BUILD**<sup>TM</sup>  
Building Solutions






**iBUILD™**  
Building Solutions

STRONGER • SMARTER • FASTER  
**MORE AFFORDABLE**

**KIT HOMES**

# BENDIGO

Combining elegance and tranquility, Kit Homes Bendigo offers an ideal retreat for new families. Its expansive verandah brings the essence of a vacation right to your doorstep

ENCLOSED	OTHER
98.06m <sup>2</sup>	66.14m <sup>2</sup>
<b>TOTAL 164.20m<sup>2</sup></b>	
 2  2  1	



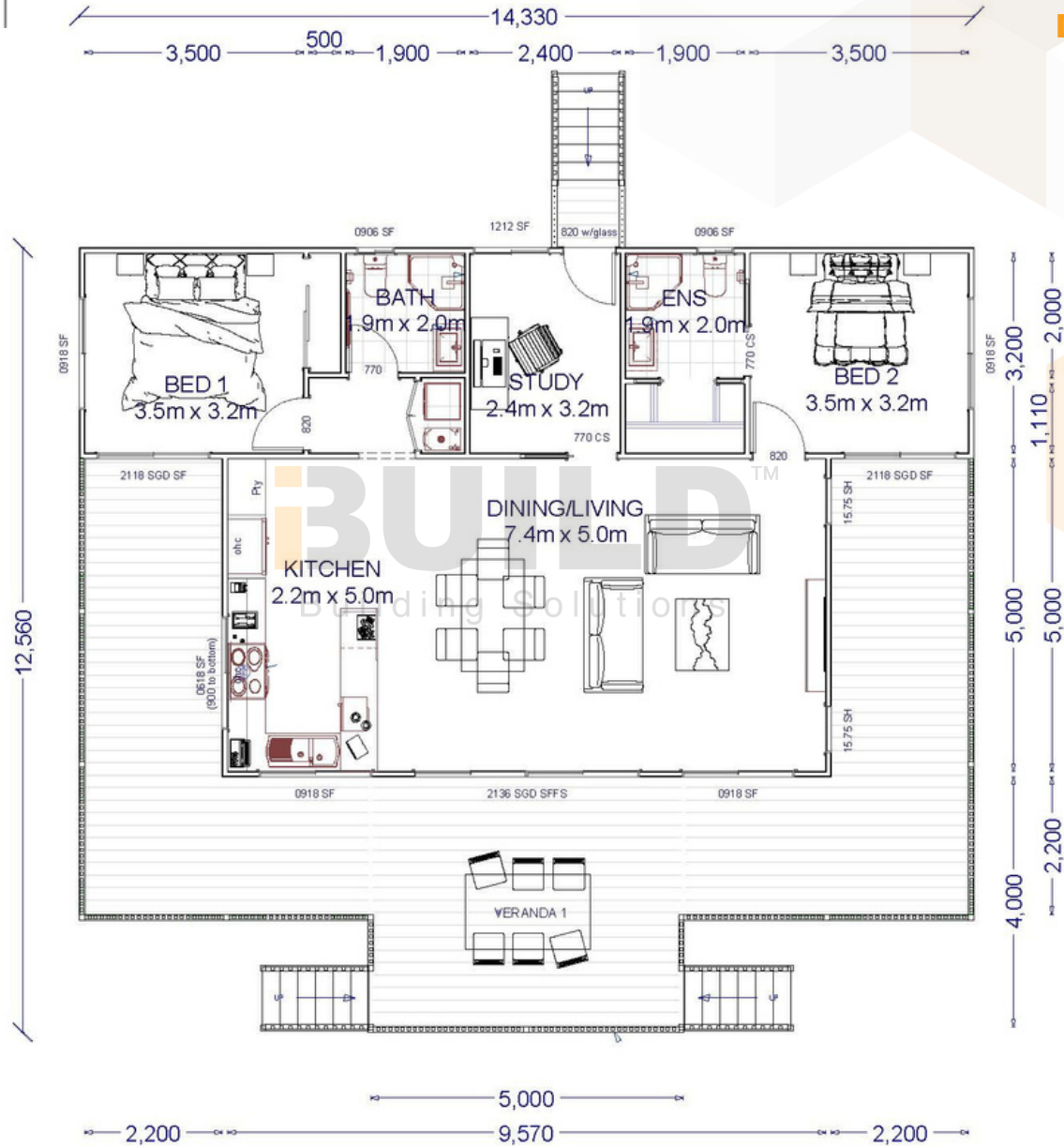
1800 679 268  
info@i-build.com.au  
www.i-build.com.au

[Facebook@ibuildau](#)  
[YouTube@ibuildbuilding](#)  
[Pinterest@ibuildbuildings](#)

Eastern Innovation  
5A Hartnett Close  
Mulgrave VIC 3170

© copyright iBuild - v9.17 20220930









**iBUILD™**  
Building Solutions




STRONGER • SMARTER • FASTER  
**MORE AFFORDABLE**



**KIT HOMES**

# Launceston

This unique two bedroom kit home exudes character and charm with a seamless open living space that is perfect for all occasions.

ENCLOSED	OTHER
70.3m <sup>2</sup>	13.33m <sup>2</sup>
<b>TOTAL 83.63m<sup>2</sup></b>	
 2	 1
	 1



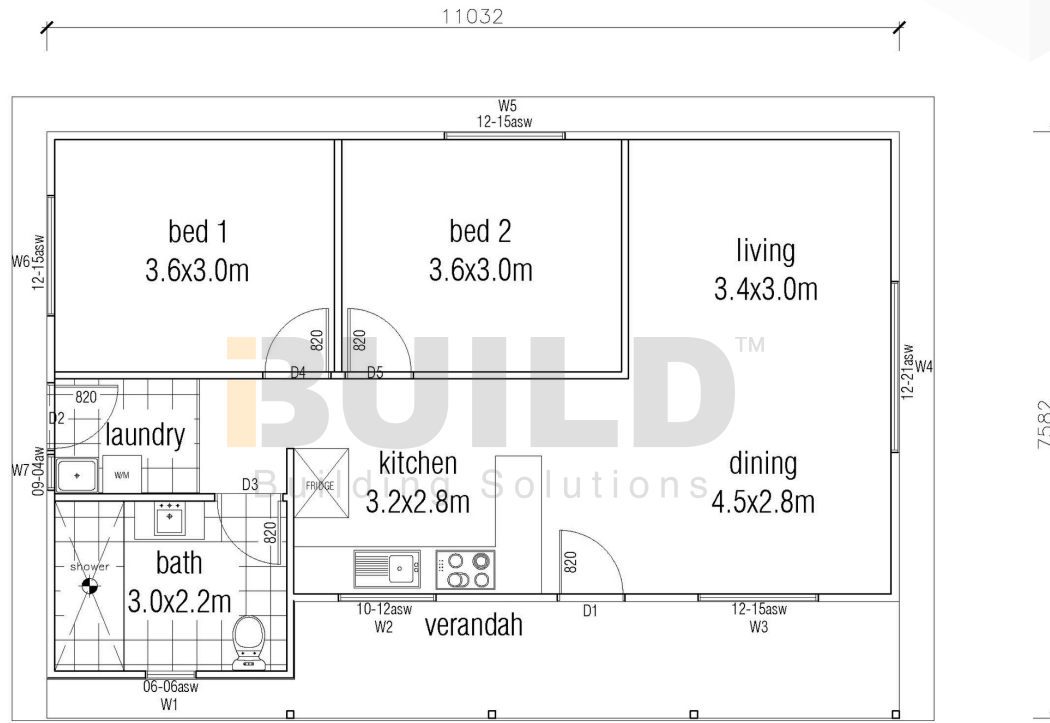
1800 679 268  
info@i-build.com.au  
www.i-build.com.au

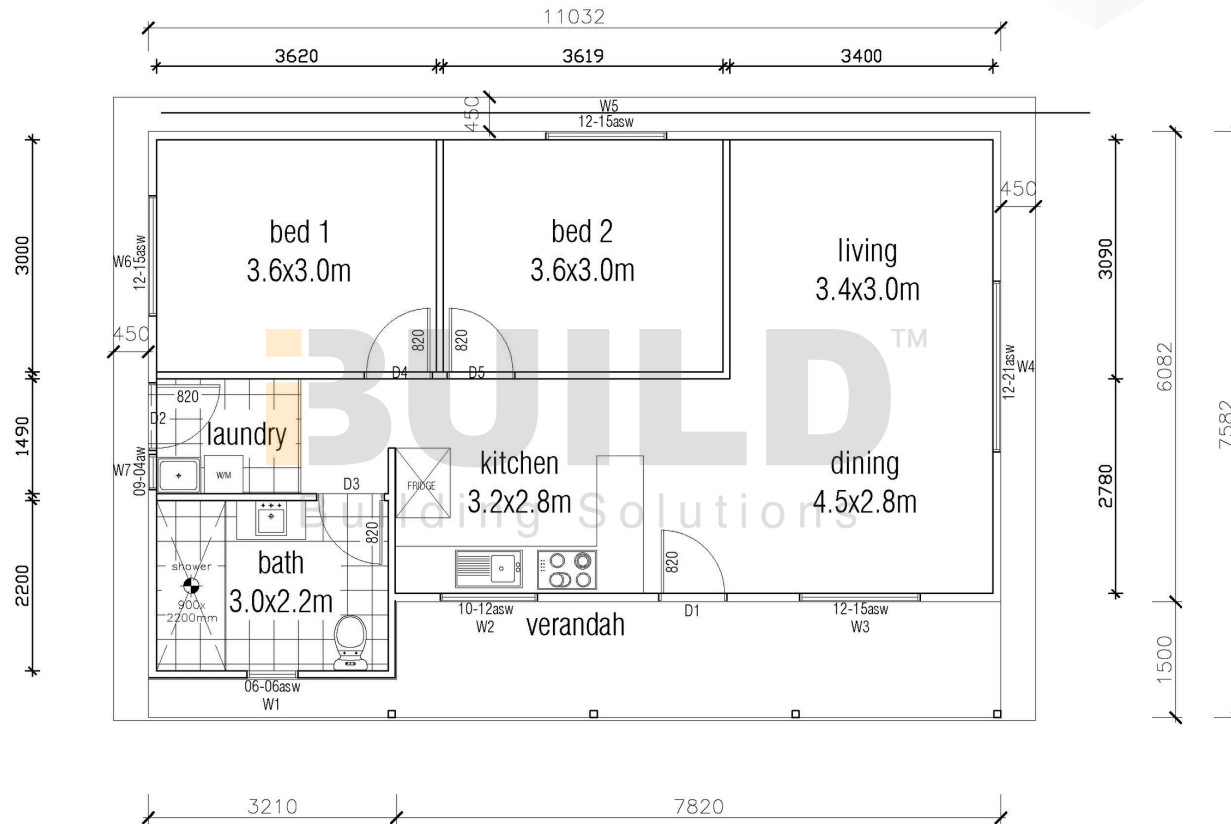
[Facebook@ibuildau](#)  
[YouTube@ibuildbuilding](#)  
[Pinterest@ibuildbuildings](#)

Eastern Innovation  
5A Hartnett Close  
Mulgrave VIC 3170

© copyright iBuild - v9.17 20220930









**BUILD**<sup>TM</sup>  
Building Solutions



**BUILD**  
Building Solutions

**BUILD**<sup>TM</sup>  
Building Solutions

STRONGER • SMARTER • FASTER  
**MORE AFFORDABLE**

**KIT HOMES**  
**MACKAY**

This two-bedroom haven has everything you need to achieve country living perfection.

ENCLOSED	OTHER
91.85m <sup>2</sup>	34.99m <sup>2</sup>
<b>TOTAL 126.84m<sup>2</sup></b>	
2	1
	1



59<sup>TH</sup> AUSTRALIAN  
Export & Investment Awards

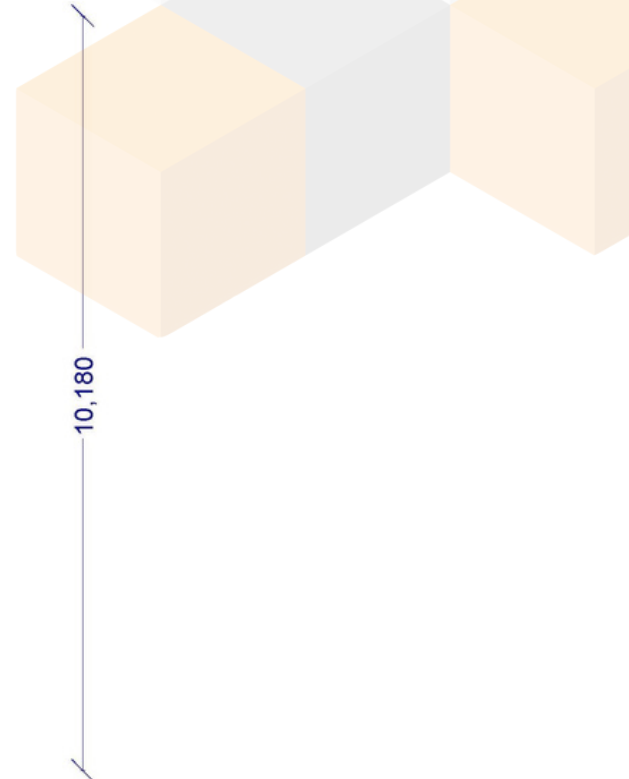
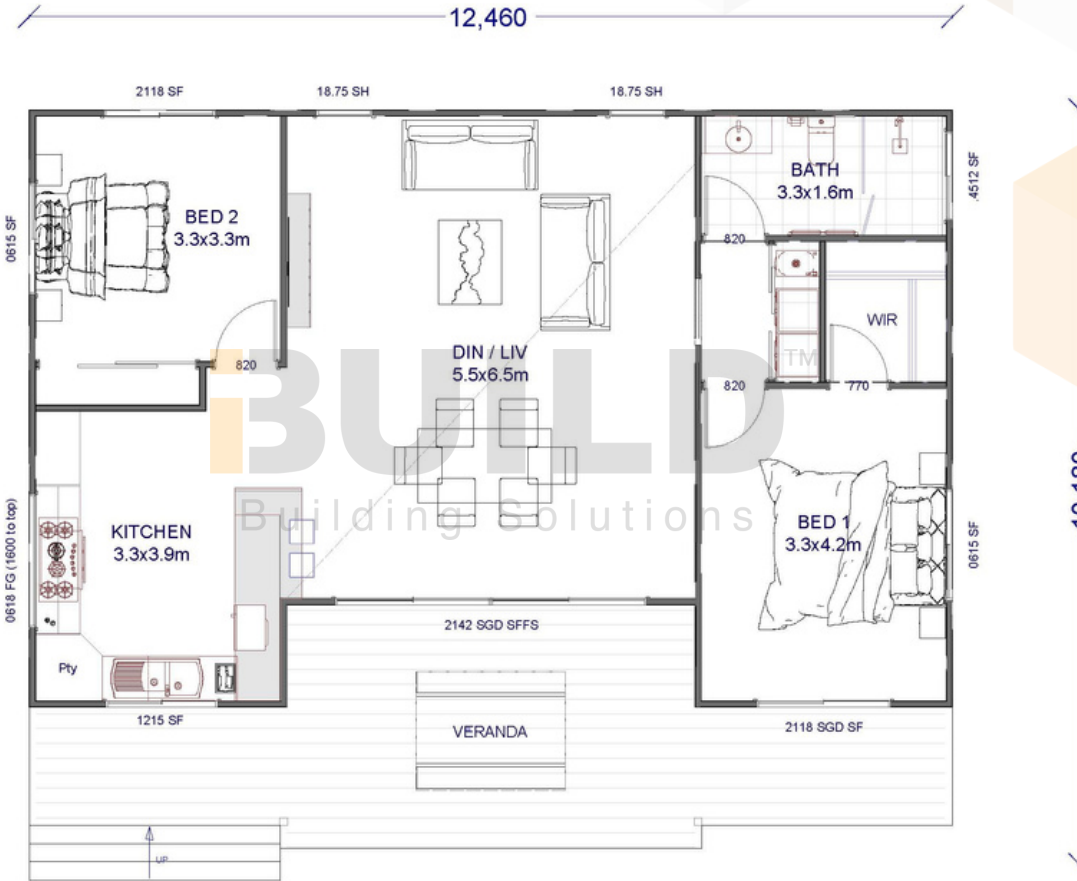


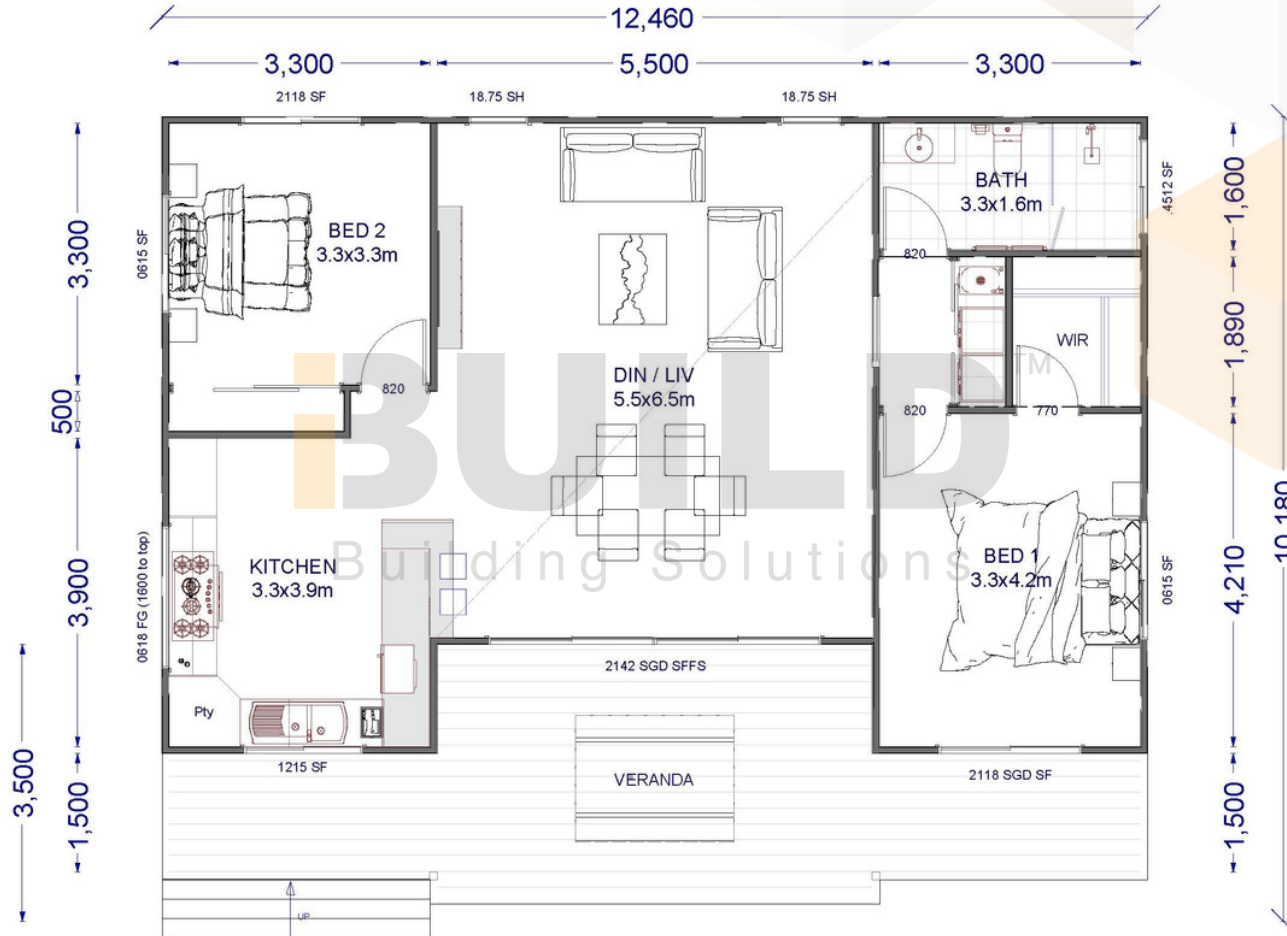
1800 679 268  
info@i-build.com.au  
www.i-build.com.au

Facebook@[ibuildau](#)  
YouTube@[ibuildbuilding](#)  
Pinterest@[ibuildbuildings](#)

Eastern Innovation  
5A Hartnett Close  
Mulgrave VIC 3170

© copyright iBuild - v9.17 20220930





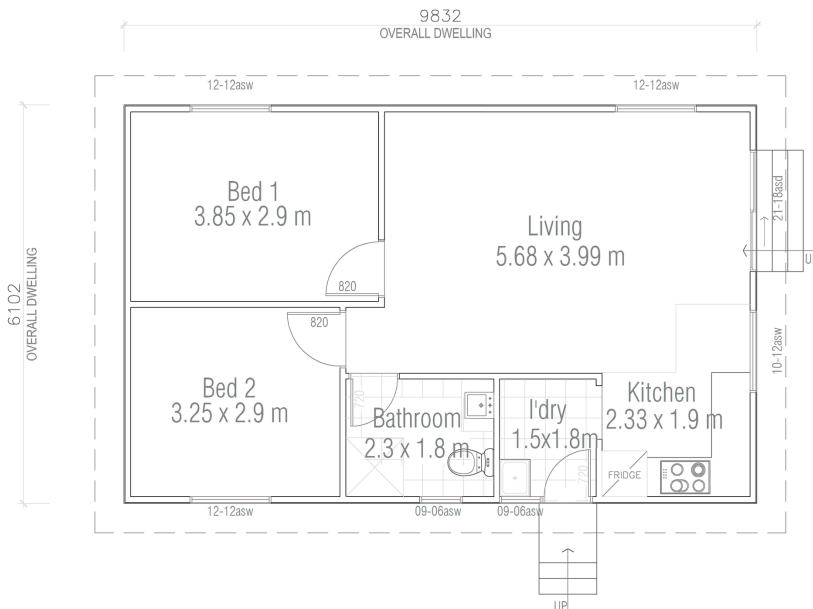







**KIT HOMES**

# Orange

The Kit Home Orange is a beautifully designed home, with a simplistic but sophisticated open living and dining area that is perfect for any family's lifestyle.



ENCLOSED	OTHER	
<b>59.7 m<sup>2</sup></b>	<b>0 m<sup>2</sup></b>	
<b>TOTAL 53.18 m<sup>2</sup></b>		
 <b>2</b>	 <b>1</b>	 <b>1</b>

For a larger view of our floor plans, please check our website.

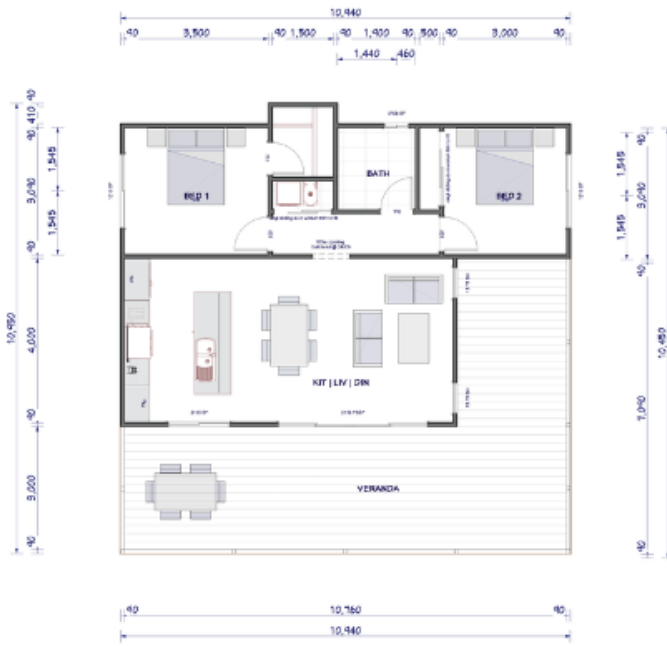




**KIT HOMES**

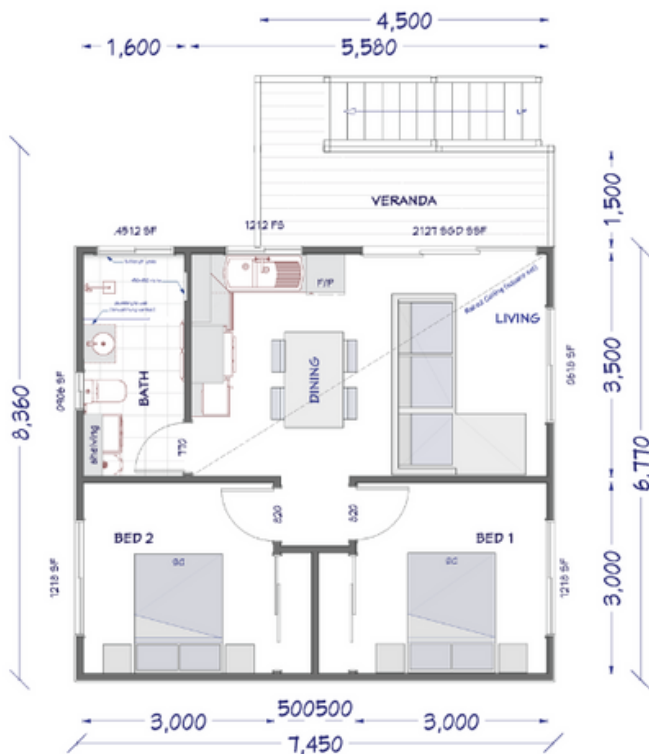
# HILLVIEW

The Kit Homes Hillview is perfect for any situation from those cosy nights around the TV in the lounge room to hosting your friends on its spacious verandah. For what ever you have in mind this 2 bedroom home is ready to make it a reality



ENCLOSED	OTHER
<b>71.09 m<sup>2</sup></b>	<b>46.24 m<sup>2</sup></b>
<b>TOTAL 117.33 m<sup>2</sup></b>	
2	1
	1

For a larger view of our floor plans, please check our website.



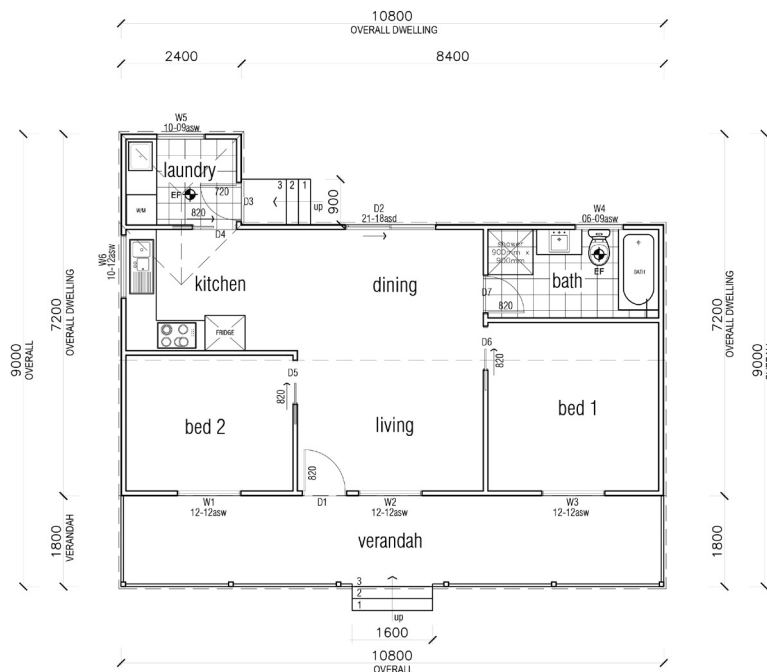
**KIT HOMES**

**HILLVIEW 44**

The Kit Homes Hillview 44 is a 2-bedroom raised home that will make you feel like a king. Its spacious living room and high verandah will make this home feel like your castle.

ENCLOSED	OTHER
51.29m <sup>2</sup>	8.58m <sup>2</sup>
<b>TOTAL 59.87m<sup>2</sup></b>	
2	1  1




For a larger view of our floor plans, please check our website.



**KIT HOMES**

**ARMIDALE**

Ideal for young families or retired people, Kit Homes Armidale will take no time to make you feel comfortable. Living room and both bedrooms have the verandah facing windows for enough natural light to brighten your home. An exclusive laundry room for people wanting it to be separate from the main living areas.

ENCLOSED	OTHER
62.64m <sup>2</sup>	19.44m <sup>2</sup>
<b>TOTAL 82.08m<sup>2</sup></b>	
 2  1  1	

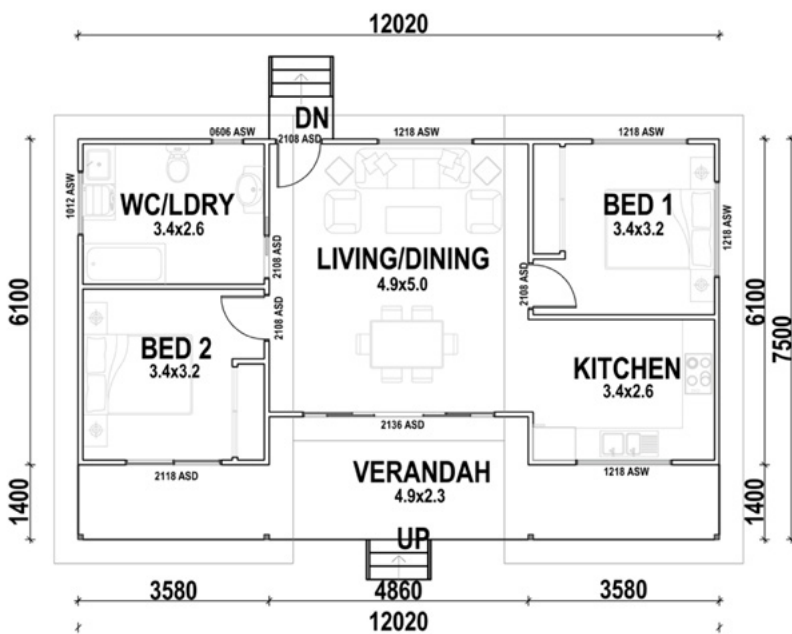
For a larger view of our floor plans, please check our website.






**KIT HOMES**

**MELROSE**

This modern looking design with its skillion roof is neat and compact. Kit homes Melrose is perfectly suited for a retired couple. It can be used for a vacation/holiday home due to its features. The snug deck leading off the living area is ideal for alfresco dining.



ENCLOSED	OTHER
68.37m <sup>2</sup>	22.16m <sup>2</sup>
<b>TOTAL 91.11m<sup>2</sup></b>	
 2  1  1	

For a larger view of our floor plans, please check our website.



**KIT HOMES**

# TAMWORTH

Turn your dreams into reality with the magnificent Tamworth. Its expansive wrap-around veranda is destined to become the backdrop for countless cherished family moments. Perfectly suited for small families, this spacious design provides generous space and privacy for everyone.

ENCLOSED	OTHER
123m <sup>2</sup>	68m <sup>2</sup>
<b>TOTAL 191m<sup>2</sup></b>	
2	2
	1

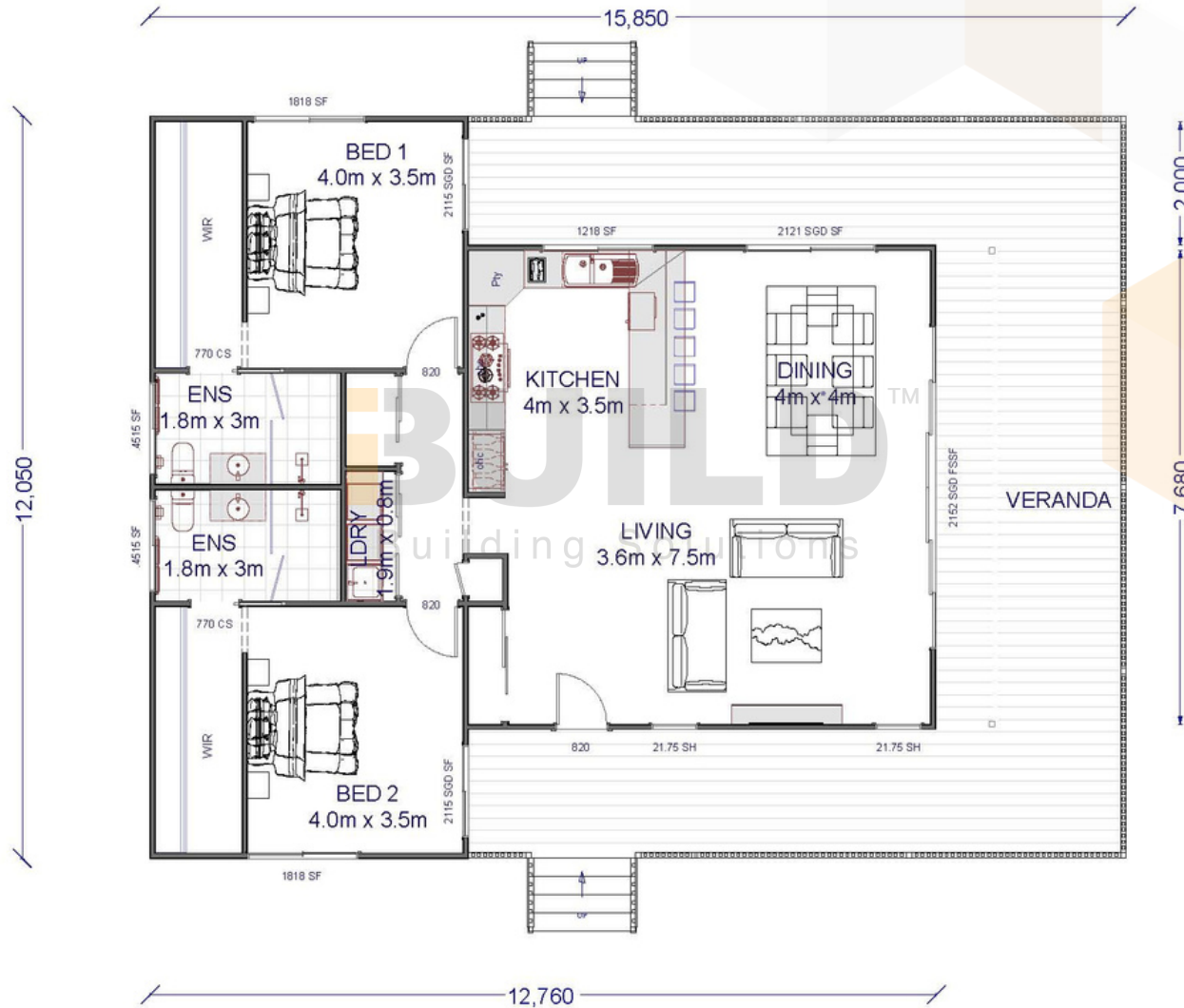


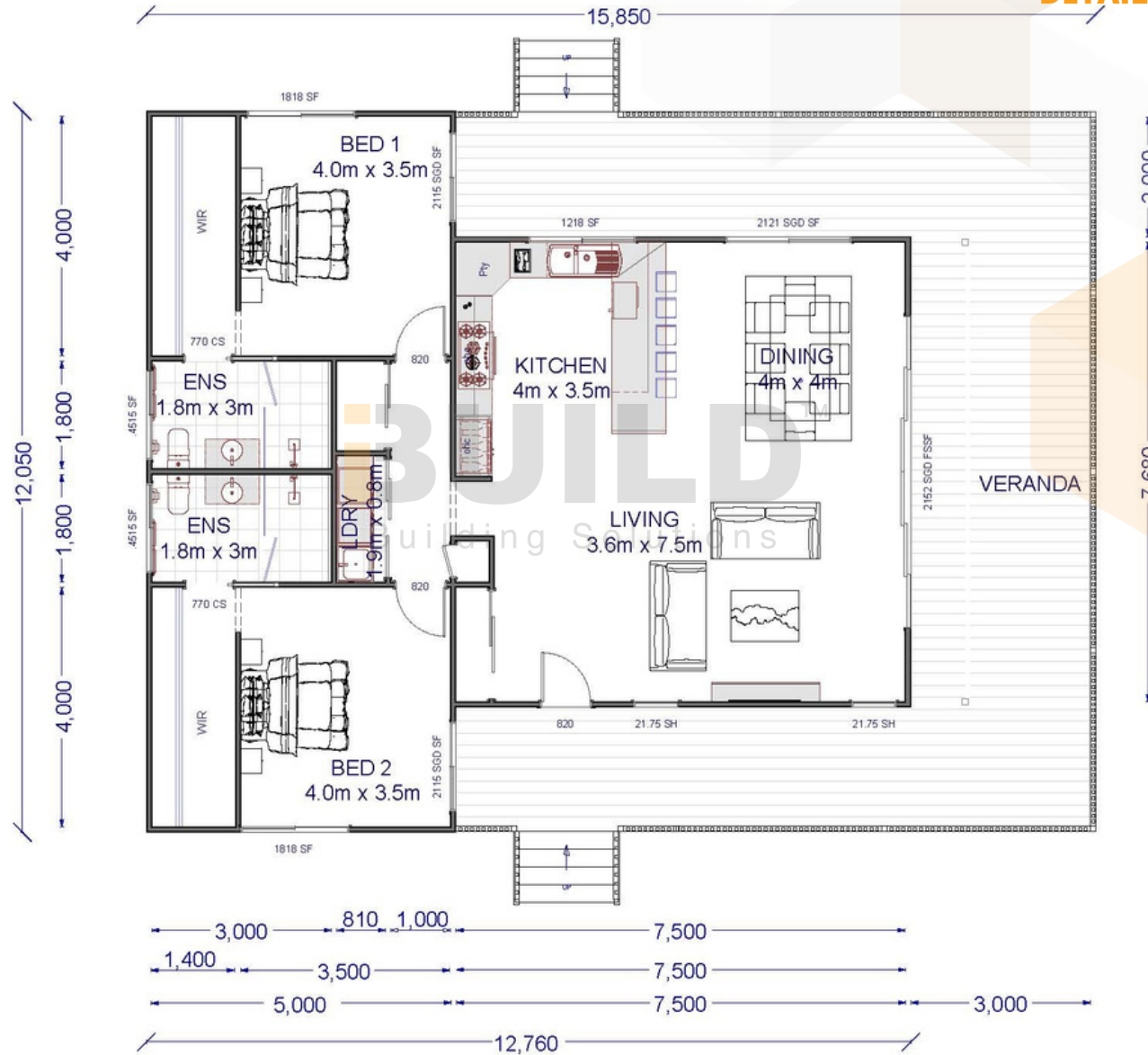
1800 679 268  
 info@i-build.com.au  
 www.i-build.com.au

[Facebook@ibuildau](#)  
[YouTube@ibuildbuilding](#)  
[Pinterest@ibuildbuildings](#)

Eastern Innovation  
 5A Hartnett Close  
 Mulgrave VIC 3170

© copyright iBuild - v9.17 20220930











**KIT HOMES**

# Tamworth 44

A beyond beautiful home discover an elegant two bedroom kit home that has been designed to offer unwavering family excellence on one seamless level.

ENCLOSED	OTHER
93.38m <sup>2</sup>	62.88m <sup>2</sup>
<b>TOTAL 156.26m<sup>2</sup></b>	
2	1
1	



1800 679 268  
 info@i-build.com.au  
 www.i-build.com.au

[Facebook@ibuildau](#)  
[YouTube@ibuildbuilding](#)  
[Pinterest @ibuildbuildings](#)

Eastern Innovation  
 5A Hartnett Close  
 Mulgrave VIC 3170

© copyright iBuild - v9.17 20220930







