



STRONGER



SMARTER



CHEAPER



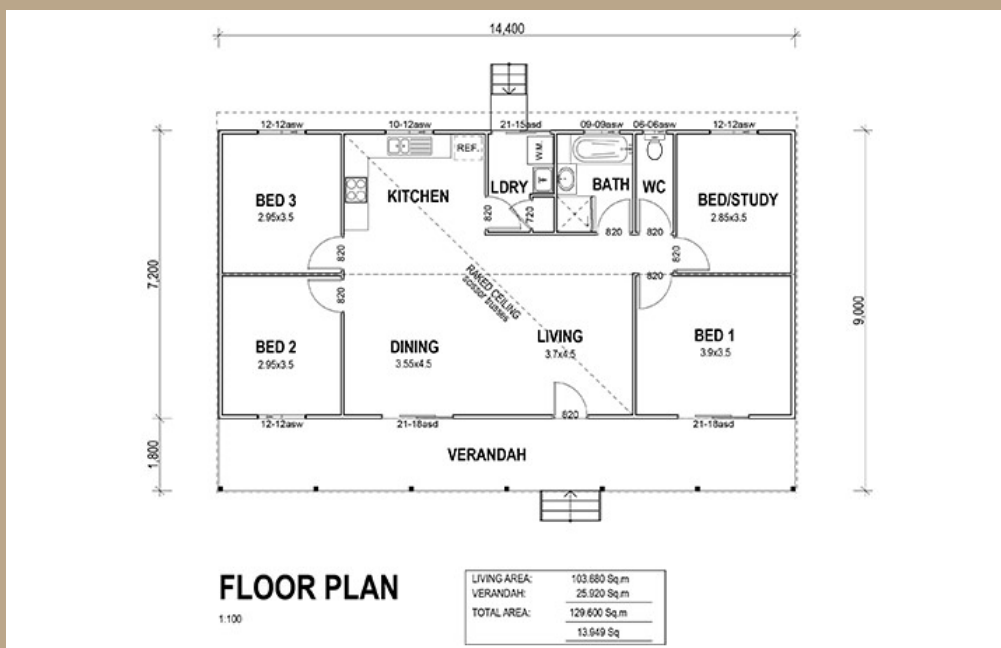
BAYVIEW

3 Bedrooms / 129.6m²

Living Area	103.68m ²
Verandah Area	25.92m ²
Total Area	129.60m ²

The three bedroom Bayview, has everything you need for the young family, or those just starting out. The verandah provides shade across the front of the house, adding to the appeal of this home.

Floor Plan



5A Hartnett Close, Mulgrave, VIC
 PO Box 2516, Mt Waverley, VIC 3149
 1800 679 268

Web: i-build.com.au email: info@i-build.com.au