



STRONGER



SMARTER



CHEAPER



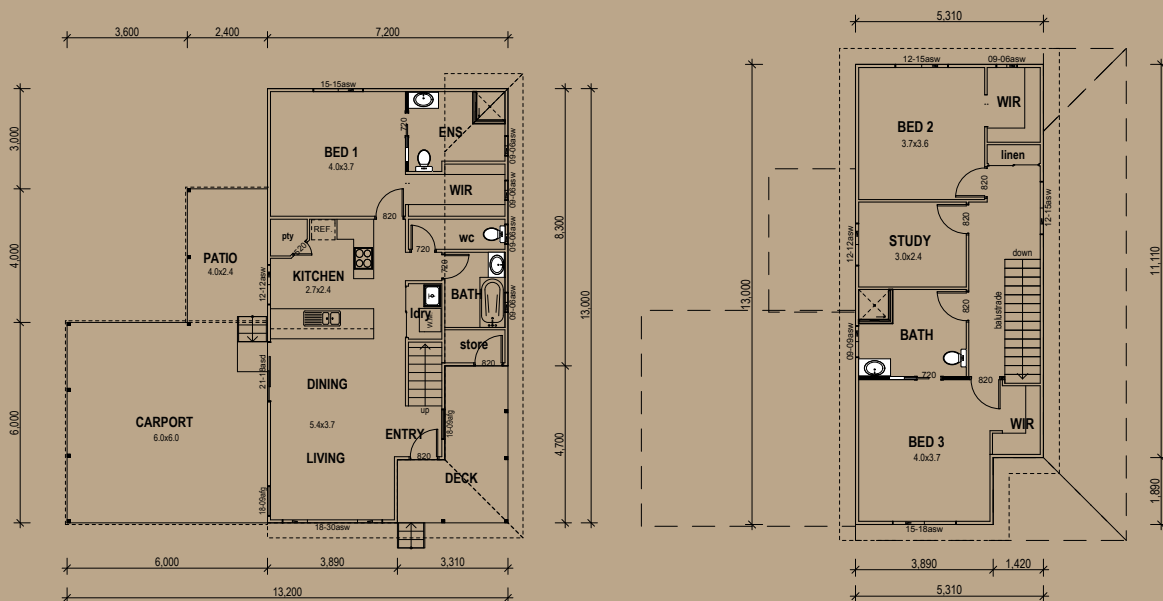
CENTRAL COAST

3 Bedrooms + Study / 205.81m²

Living Area	148.64m ²
Verandah Area	21.17m ²
Total Area	205.81m ²

The spacious, double storey Central Coast features three large bedrooms, each with a walk in robe. The kitchen has a large corner pantry, with easy access to all amenities, while the entry from the carport means that you can keep dry from your car to inside your home.

Floor Plan



5A Hartnett Close, Mulgrave, VIC
 PO Box 2516, Mt Waverley, VIC 3149
 1800 679 268

Web: i-build.com.au email: info@i-build.com.au