



STRONGER



SMARTER



CHEAPER



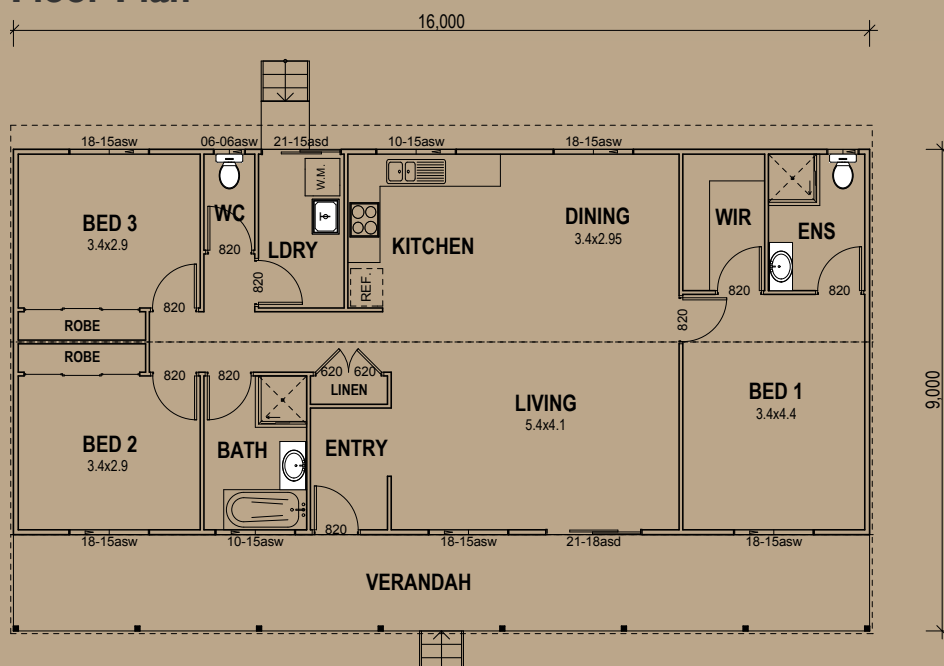
## EMERALD

3 Bedrooms / 144.00m<sup>2</sup>

Living Area	115.20m <sup>2</sup>
Verandah Area	28.80m <sup>2</sup>
Total Area	144.00m <sup>2</sup>

With the main entry leading from a shady verandah, the Emerald will keep you cool in summer. This home is perfect for a young family, or for first home buyers.

### Floor Plan



5A Hartnett Close, Mulgrave, VIC  
 PO Box 2516, Mt Waverley, VIC 3149  
 1800 679 268

Web: [i-build.com.au](http://i-build.com.au)

email: [info@i-build.com.au](mailto:info@i-build.com.au)