



STRONGER



SMARTER



CHEAPER



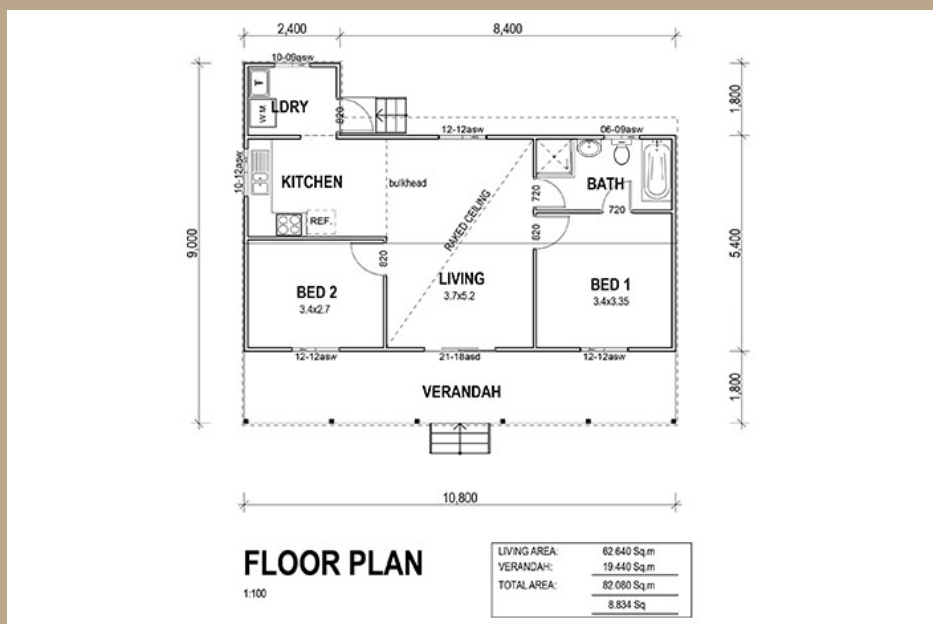
TAMWORTH

2 Bedrooms / 82m²

Living Area	63m ²
Verandah Area	19m ²
Total Area	82m ²

This cozy yet rustic kit home Tamworth is perfect for small families in rural areas. With a simple floor plan, the Tamworth takes the guess work out of buying a home.

Floor Plan



5A Hartnett Close, Mulgrave, VIC
PO Box 2516, Mt Waverley, VIC 3149
1800 679 268

Web: i-build.com.au email: info@i-build.com.au