



STRONGER



SMARTER



CHEAPER



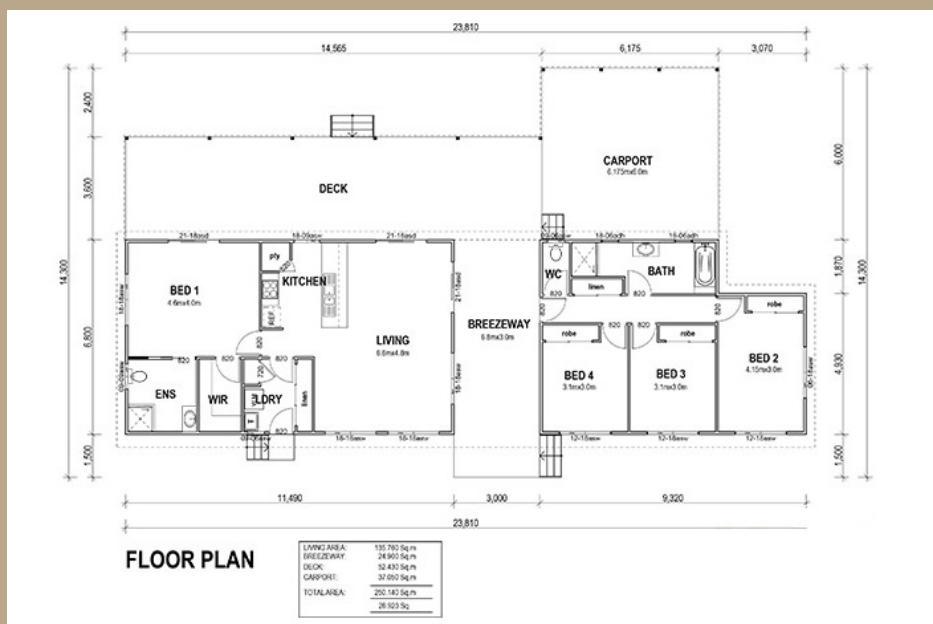
## TOOWOOMBA

4 Bedrooms / 250m<sup>2</sup>

Living Area	135m <sup>2</sup>
Verandah Area	25m <sup>2</sup>
Total Area	250m <sup>2</sup>

A suburban dreamhouse, the kit home Toowoomba is great for families. The master bedroom includes a spacious ensuite and walk-in robe, perfect for parents to unwind at the end of the day.

### Floor Plan



5A Hartnett Close, Mulgrave, VIC  
 PO Box 2516, Mt Waverley, VIC 3149  
 1800 679 268

Web: [i-build.com.au](http://i-build.com.au) email: [info@i-build.com.au](mailto:info@i-build.com.au)