

IBUILD T421

4 BEDROOM, 2 ENSUITE, 1 KITCHEN, 124M²

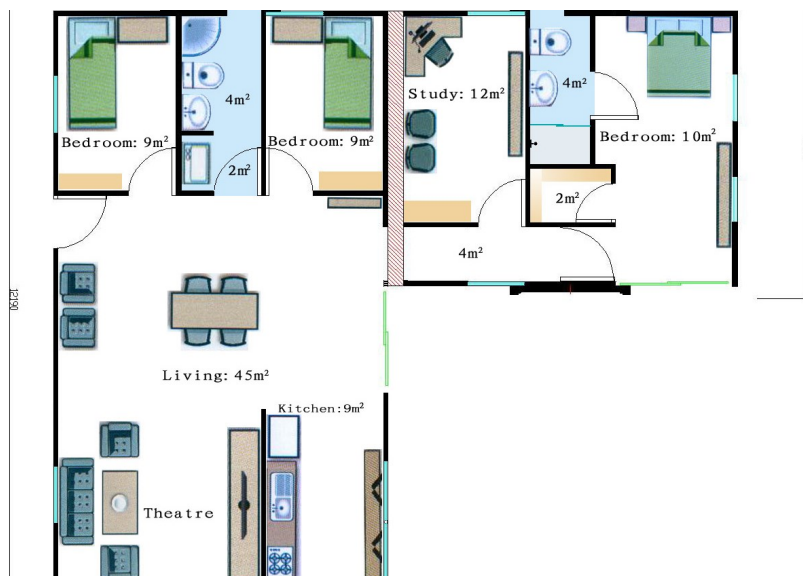


iBuild Homes are exceptionally stylish, smart, flexible, and attractive houses that are designed to sustain outstanding living conditions in almost any locations.

General Specifications

- Fully compliant with the Building Codes Australia (BCA)
- D2 cyclone rated steel structure; seam welded; steel sheet external wall & roof cladding; and marine paint finish
- Minimum 6 star energy efficiency rating
- Approximate weight – 24 tonnes
- Internal ceiling height – 2.4m raking up to 2.9m
- Fully insulated (rock wool) roof and wall
- Hard wired smoke detectors
- Laminated MDF to all insulated ceilings
- Pre-fitted utilities including plumbing, AC outlets, switches, phone/TV/data points and RCD safety switches
- Split system AC outlets in all areas to run up to 1.5hp
- Bamboo flooring on termite treated marine grade ply base on a structural steel sub-frame
- Service terminations are ready to receive external connections
- Thermal Barrier, double glazed aluminium window system
- Hard wiring for ceiling fans and/or additional lighting
- Choice of Colorbond Exterior colours, subject to availability
- Bathroom fittings include vanity cabinet, overhead cabinet, stainless steel vanity mirror, Vitreous vanity bowl, Vitreous toilet with WELS 4 STAR (4.5L/flush) wall-integrated cistern and floor mounted pan, glass shower screens, and exhaust fan
- Pre-fitted kitchen includes stone bench top, stainless steel sink, WELS 4 STAR (7.5L/MIN) mixer tap, and overhead cabinets

Note specifications are subject to change without notice.



Optional features

- Air conditioning units
- Hot water units
- Solar heat pumps
- Security mesh windows and insect screens
- Exterior doors security type with insect proof screen and security window incorporated
- Window louvers
- Tinted window treatment
- Stainless steel bathroom floor
- Polycarbonate shower screen

IBUILDTM
Modulars

Phone: 1800 679 268

Fax: (03) 8562 2288

Email: info@i-build.com.au

5A Hartnett Close, Mulgrave, VIC

PO Box 2516, Mt Waverley, VIC 3149

Web: <http://www.i-build.com.au>